



## Esther Anne Place, N1

£685,000

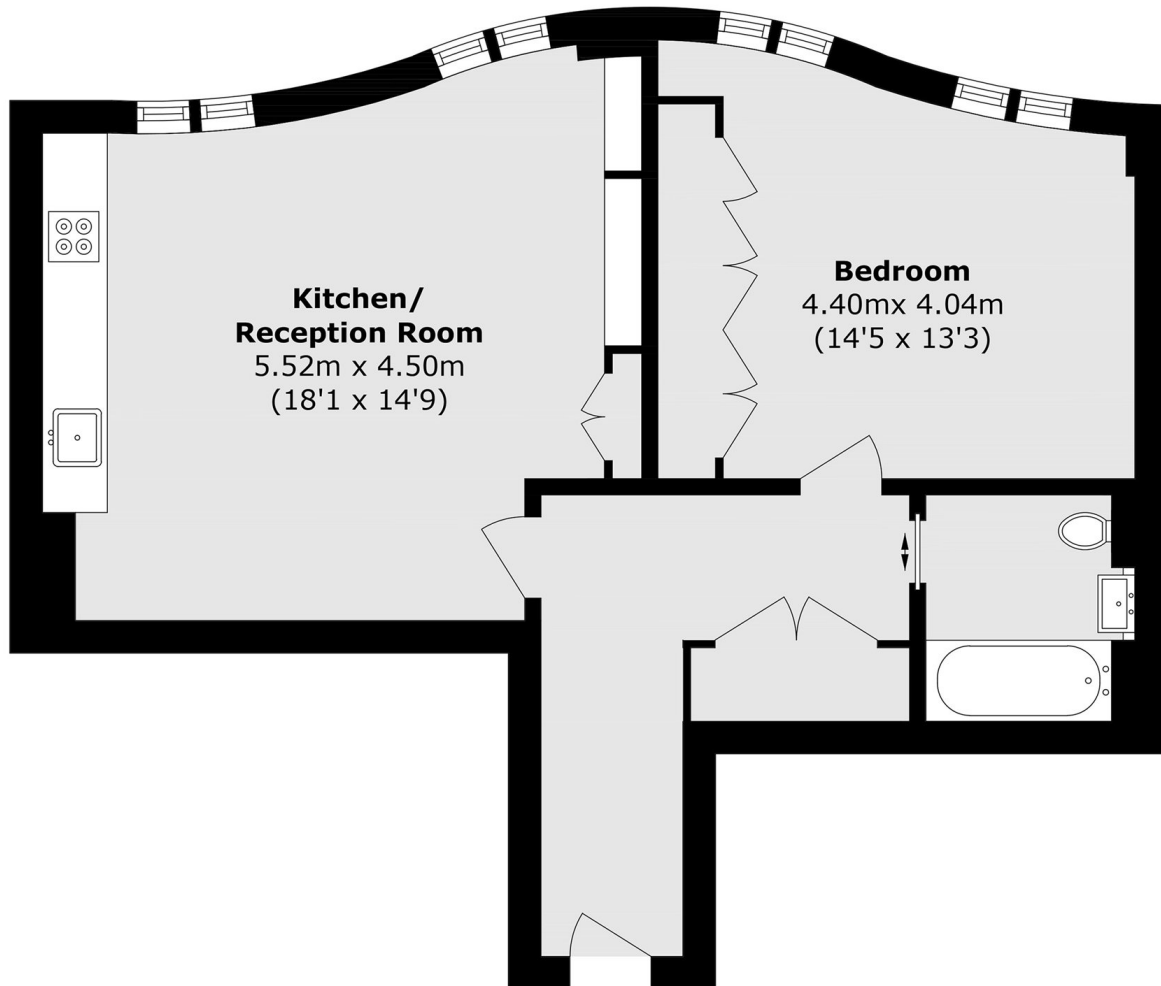
A spacious one double bedroom apartment set within the former Edwardian Royal Mail sorting office, forming part of the highly sought-after Islington Square development in the heart of Islington. The property offers a bright open-plan kitchen, living and dining area with underfloor heating throughout and built-in storage space, a principal bedroom with fitted wardrobes, a contemporary bathroom, and a separate utility room. Residents further benefit from beautifully landscaped communal gardens and concierge service.

Ideally located on Esther Anne Place, moments from Upper Street's array of shops, cafés and restaurants, with excellent transport links nearby including Angel Underground station and Highbury & Islington station.

### Features

- On Site Concierge
- Secure Bike Storage
- Lift Access
- Immaculate Condition
- Open-Plan Kitchen
- Excellent Transport Links

# Esther Anne Place, London, N1



Total area (approx.): 57.0 sq. m (613.5 sq. ft)