



Junction Road , London, N19

Guide price £600,000

We are proud to offer to the market this neutrally decorated apartment on the second floor (with lift). The property has two balconies and comprises three generous double bedrooms. There is a full bathroom plus ensuite shower room to the main bedroom.

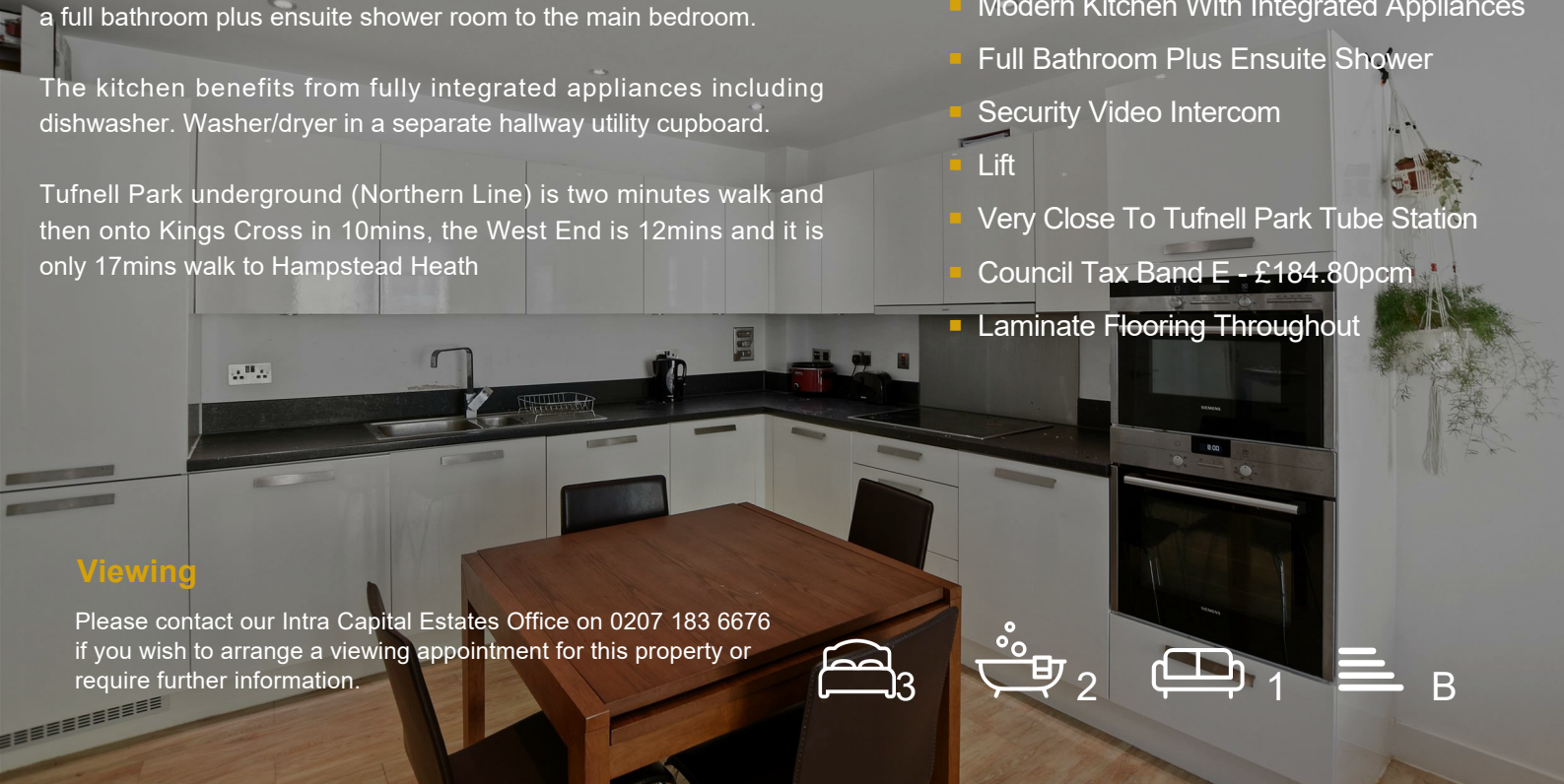
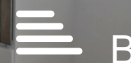
The kitchen benefits from fully integrated appliances including dishwasher. Washer/dryer in a separate hallway utility cupboard.

Tufnell Park underground (Northern Line) is two minutes walk and then onto Kings Cross in 10mins, the West End is 12mins and it is only 17mins walk to Hampstead Heath

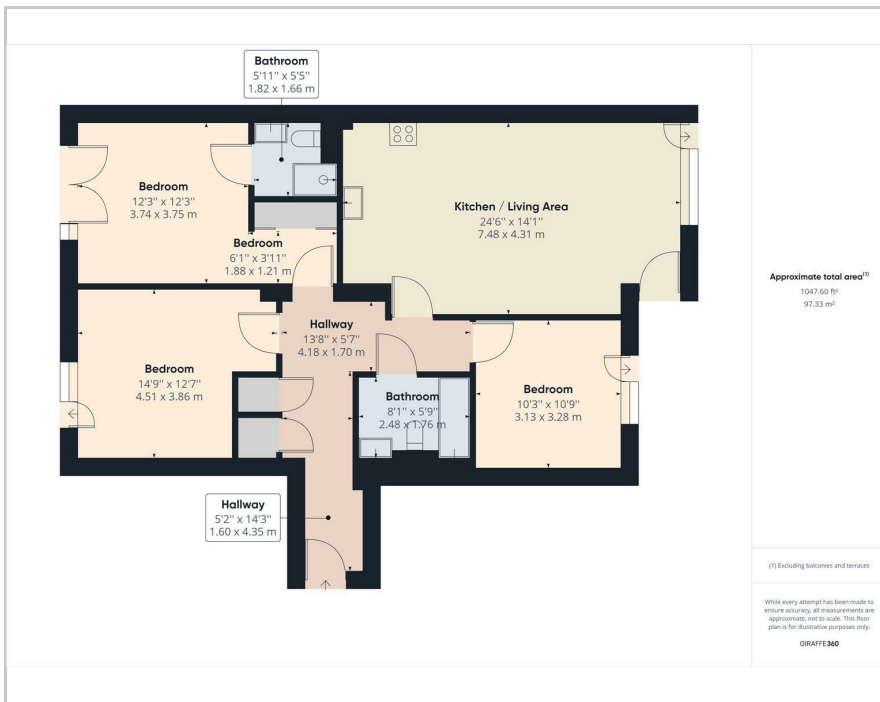
- Three Double Bedrooms
- Two Balconies
- Modern Kitchen With Integrated Appliances
- Full Bathroom Plus Ensuite Shower
- Security Video Intercom
- Lift
- Very Close To Tufnell Park Tube Station
- Council Tax Band E - £184.80pcm
- Laminate Flooring Throughout

Viewing

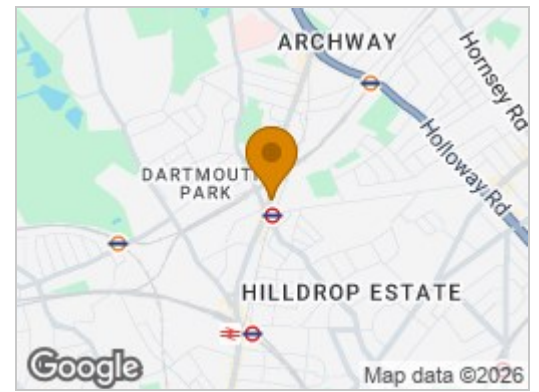
Please contact our Intra Capital Estates Office on 0207 183 6676 if you wish to arrange a viewing appointment for this property or require further information.



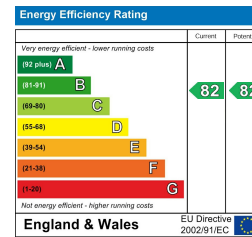
Floor Plan



Area Map



Energy Efficiency Graph



These particulars, whilst believed to be accurate are set out as a general outline only for guidance and do not constitute any part of an offer or contract. Intending purchasers should not rely on them as statements of fact, but must satisfy themselves by inspection or otherwise as to their accuracy. No person in this firm's employment has the authority to make or give any representation or warranty in respect of the property.

INTRA-CAPITAL ESTATES

Paddington Works, 8 Hermitage Street, London, W2 1BE

Tel: 0207 183 6676 Email: info@intra-capital.co.uk

www.intra-capital.co.uk

Intra-Capital Estates is a trading name of Intra Capital Estates Limited, a private limited company registered in England and Wales. Registered number: 11840427. VAT registration number: 31763281. Registered office Paddington Works, 8 Hermitage Street, London, W2 1BE.

MODERN APPROACH TRADITIONAL VALUES

