



## Orbis Wharf

Bridges Court Road | | London | SW11

£2,100 Per month

MASON  
& VALE  
PROPERTY

# Orbis Wharf

Bridges Court Road |

London | SW11

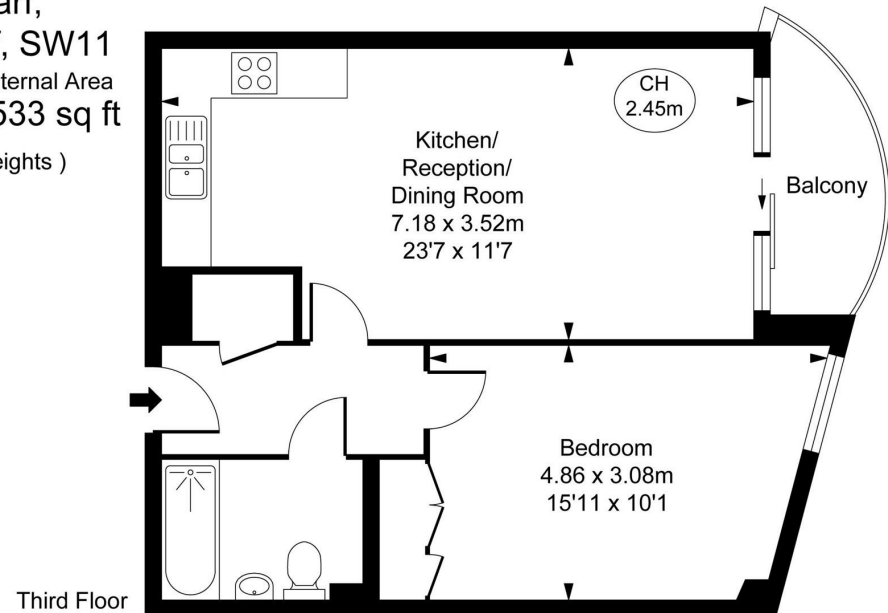
£2,100 Per month

A well presented one bed apartment located in this Riverside development in Battersea. Offering 533 sq ft of accommodation comprising an open-plan kitchen/reception room with floor-to-ceiling windows and door to the private balcony offering views across the communal gardens to the river, bedroom and bathroom,.

- 24 Hour Concierge
- Communal Courtyard Gardens
- Located on the riverwalk
- Private balcony With river views
- Underground parking available via separate negotiation



Orbis Wharf,  
Bridges Wharf, SW11  
Approximate Gross Internal Area  
49.50 sq m / 533 sq ft  
( CH = Ceiling Heights )



This plan is not to scale. It is for guidance and not for valuation purposes.  
All measurements and areas are approximate only, and have been prepared in accordance with the current edition of the RICS Code of Measuring Practice.  
© Fulham Performance

Energy Efficiency Rating		
	Current	Potential
Very energy efficient - lower running costs		
(92 plus) <b>A</b>		
(81-91) <b>B</b>	82	82
(69-80) <b>C</b>		
(55-68) <b>D</b>		
(39-54) <b>E</b>		
(21-38) <b>F</b>		
(1-20) <b>G</b>		
Not energy efficient - higher running costs		
<b>England &amp; Wales</b>	EU Directive 2002/91/EC	

Council Tax Band D

EPC Rating B

02078560313

hello@masonandvale.co.uk

masonandvale.co.uk