



Price

£400,000

Freehold

4x  1x  3x 

**Rushdean Road, Strood,
Rochester, Kent, ME2**

Wards
Helping you move forwards



Main features

- Extended 4 bedroom semi-detached house
- Shower room and cloakroom
- Driveway for at least 3 cars and an 18' garage
- Ideally located for access to the A2/M2, within a mile of schools and amenities
- Close to Ranscombe Park Reserve

Accommodation

SPLIT LEVEL GROUND FLOOR

Entrance Hall
 Cloakroom
 Family Area: 18'0 x 9'3 (5.49m x 2.82m)
 Office Area: 10'0 x 3'9 (3.05m x 1.14m)
 Lounge: 18'10 x 15'6 (5.74m x 4.73m)
 Dining Room : 13'6 x 11'8 (4.12m x 3.56m)
 Kitchen : 16'9 x 10'6 (5.11m x 3.20m)

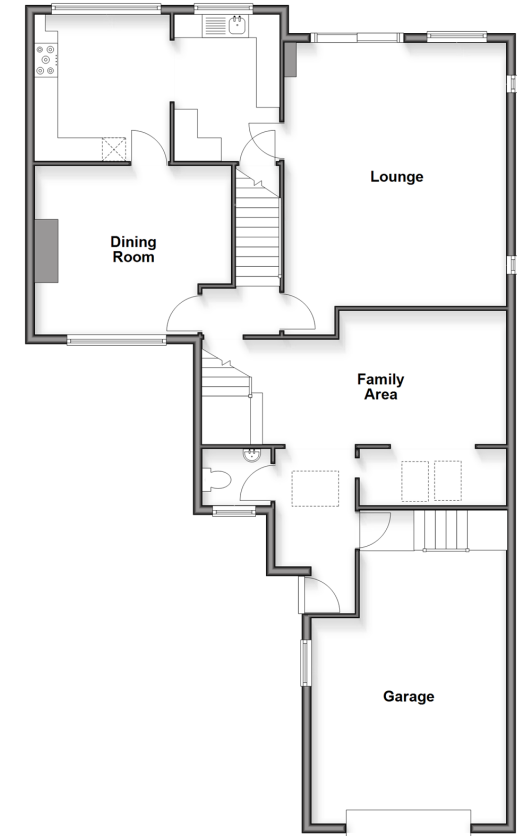
FIRST FLOOR

Landing
 Bedroom 1 : 13'7 x 10'0 (4.14m x 3.05m)
 Bedroom 2 : 11'5 x 10'5 (3.48m x 3.18m)
 Bedroom 3 : 12'8 x 8'7 (3.86m x 2.62m)
 Bedroom 4 : 9'0 x 7'0 (2.75m x 2.14m)
 Shower Room : 9'1 x 5'9 (2.77m x 1.75m)

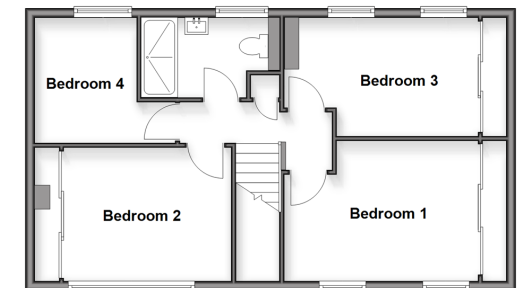
OUTSIDE

Driveway
 Front Garden
 Rear Garden

Split Level Ground Floor
 Approx. 121.0 sq. metres (1302.0 sq. feet)



First Floor
 Approx. 57.6 sq. metres (620.5 sq. feet)



Call Strood - 01634 716597 ■ wardsof Kent.co.uk

- Legal advice should be taken to verify fixtures/fittings, planning, alterations and/or lease details
- Appliances & services are untested, dimensions are approximate and floor plans are not to scale



11845943/20260220/DV/JC