



3 Shoreswood Walk

, Middlesbrough, TS5 8BZ

£280,000



Igomove are pleased to present this exceptional four bedroom dormer bungalow located in the quite cul-de-sac of Shoreswood Walk in Acklam. Having undergone an extensive enhancement, this home now stands as a truly turn-key residence, perfectly suited to modern family life.

Location:

Positioned within the ever-desirable Acklam area, Shoreswood Walk enjoys a reputation for its quiet surroundings, strong sense of community and excellent local amenities. Well-regarded schools, convenient transport links and nearby green spaces further enhance the appeal of this outstanding location.



About The Property:

From the moment you arrive, the property exudes kerb appeal, with its attractive façade and neatly maintained frontage, which sets the tone for what lies beyond.

Step inside and you are immediately welcomed by a calm and inviting porch leading into the well lit entrance hall, where soft, neutral tones and quality finishes create a sense of understated luxury.

The home unfolds beautifully into a stunning dining space, bathed in natural light and framed by elegant French doors that open out onto the garden. The kitchen is a true centrepiece; thoughtfully designed with sleek cabinetry, stylish worktops and carefully curated details, it offers both visual appeal and everyday practicality.

The main reception room is equally impressive—an effortlessly stylish lounge featuring refined décor, panelled walls and a warm, welcoming ambience.

The ground floor continues to impress with a beautifully appointed bedroom and a luxurious bathroom, where a freestanding bath and contemporary walk-in shower evoke a boutique hotel feel.

Completing the downstairs accommodation is the utility area which has been thoughtfully configured to provide dedicated laundry facilities, with space and plumbing for both a washing machine and dryer. Flowing seamlessly through, the adjoining cloakroom is a bold and stylish statement space. Rich, characterful wallpaper paired with dark panelling creates a luxurious feel, elevated further by contemporary fittings.

Upstairs Retreat

To the first floor, the property reveals three further generously proportioned bedrooms, each thoughtfully styled to provide peaceful, private sanctuaries. The versatile layout lends itself perfectly to growing families, guest accommodation or even a dedicated home workspace.

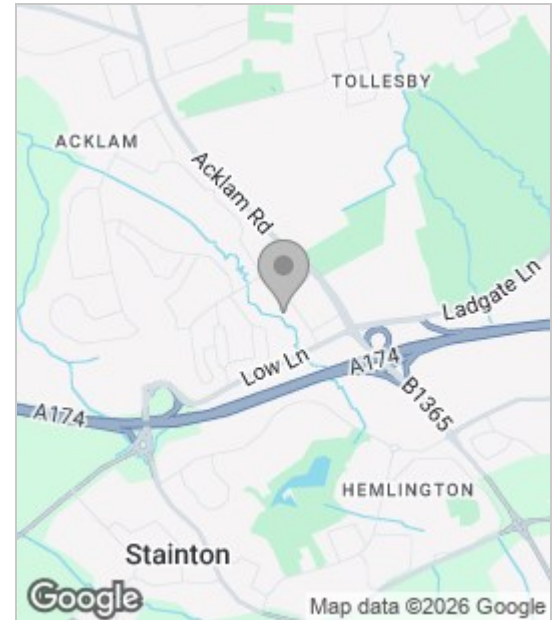
The bright master bedroom offers generous proportions as well as featuring a striking en-suite, accessed through sliding door. The space has been thoughtfully designed to offer a luxurious, spa-like feel for guests or family members alike.

The rear garden has been carefully landscaped to create a private and tranquil haven. A lush lawn is complemented by raised seating areas and a stylish patio—ideal for dining, summer entertaining, or simply unwinding in the sunshine. A generous stretch of lawn surrounds the perimeter of the residence, ideal for those green fingered. To the side, a driveway provides off-street parking and leads to a detached garage, offering additional practicality.

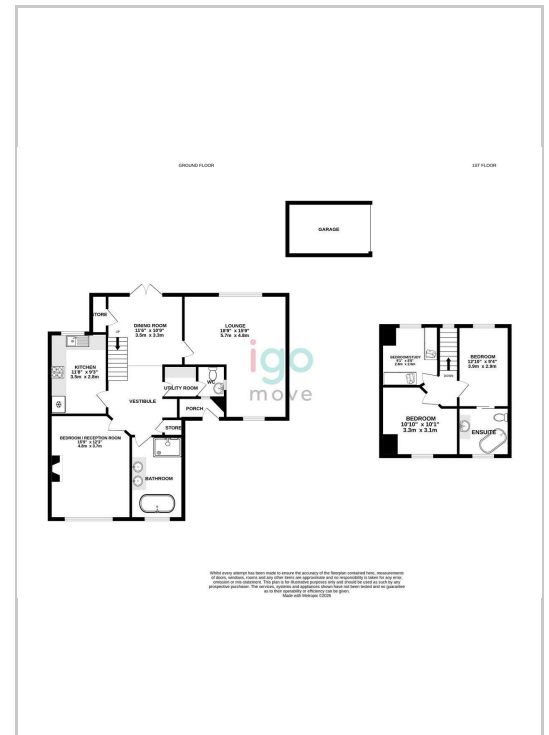
This home certainly offers an exceptional standard of accommodation in a location that continues to be in high demand. Make this home your own and book your viewing today. Igomove are open 7 days a week.

These particulars, whilst believed to be accurate are set out as a general outline only for guidance and do not constitute any part of an offer or contract. Intending purchasers should not rely on them as statements of representation of fact, but must satisfy themselves by inspection or otherwise as to their accuracy. No person in this firm's employment has the authority to make or give any representation or warranty in respect of the property.

Area Map



Floor Plan



Energy Efficiency Graph

