



**Deburgh Road, SW19**

**£1,050,000**

**Dexters**





## Deburgh Road, SW19

One of the finest examples of a three double bedroom, two bathroom Victorian terraces houses, within The Poets. The kitchen and loft have both been extended to a superb standard.

The ground floor has a through Reception room, complete with bespoke alcove storage and a modern fireplace, with wooden flooring throughout. The kitchen has been extended, offering a modern, exposed brick and glass roof-light finish, complete with a utility room and downstairs w/c.

The first floor has two large double bedrooms, both with fitted wardrobes and a large four piece family bathroom, combining some of the finest tiling and bathroom sanitary ware. The loft has been converted to offer a breathtaking principle bedroom, with built in wardrobes, Juliette balcony and a separate luxury shower room.

The garden has been cleverly arranged to offer a covered patio area, ideal for barbeques, with a grass landscaped garden beyond.

A quiet residential street equidistant to Wimbledon Station, Haydons Road and South Wimbledon stations. Close to hand you'll find Wimbledon Broadway with it vast array of restaurants, bars, coffee shops and premium shopping facilities.

### Features

- Three Double Bedrooms
- Two Bathrooms
- Victorian Terrace House
- Unrivalled Finish Throughout
- Rear And Loft Extended
- Poets Location





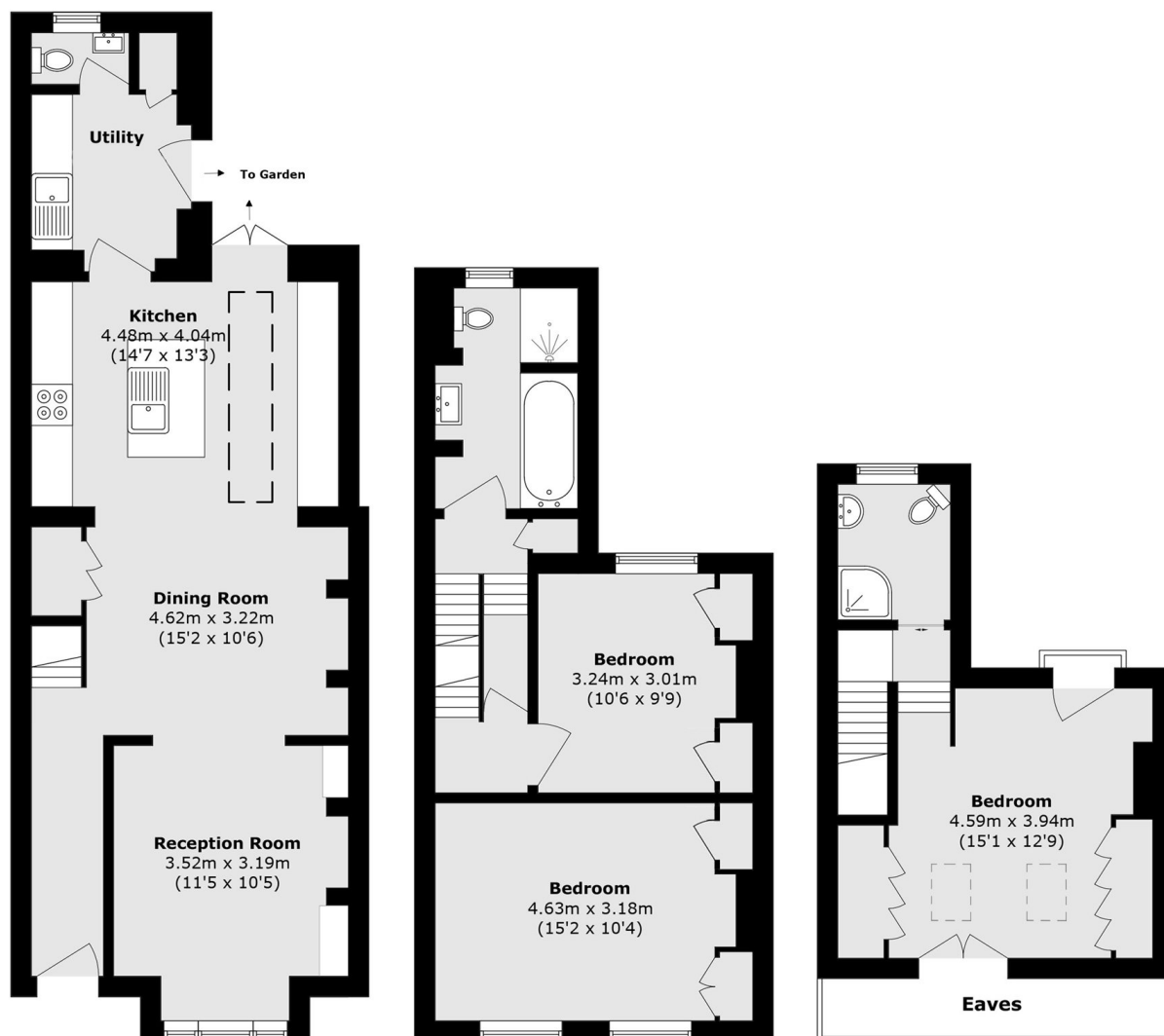








# Deburgh Road, London, SW19



**Ground Floor**

**First Floor**

**Second Floor**

Total area (approx.): 118.4 sq. m (1274.4 sq. ft)  
(Excluding Eaves)