



## Edensor Gardens, W4

£450,000

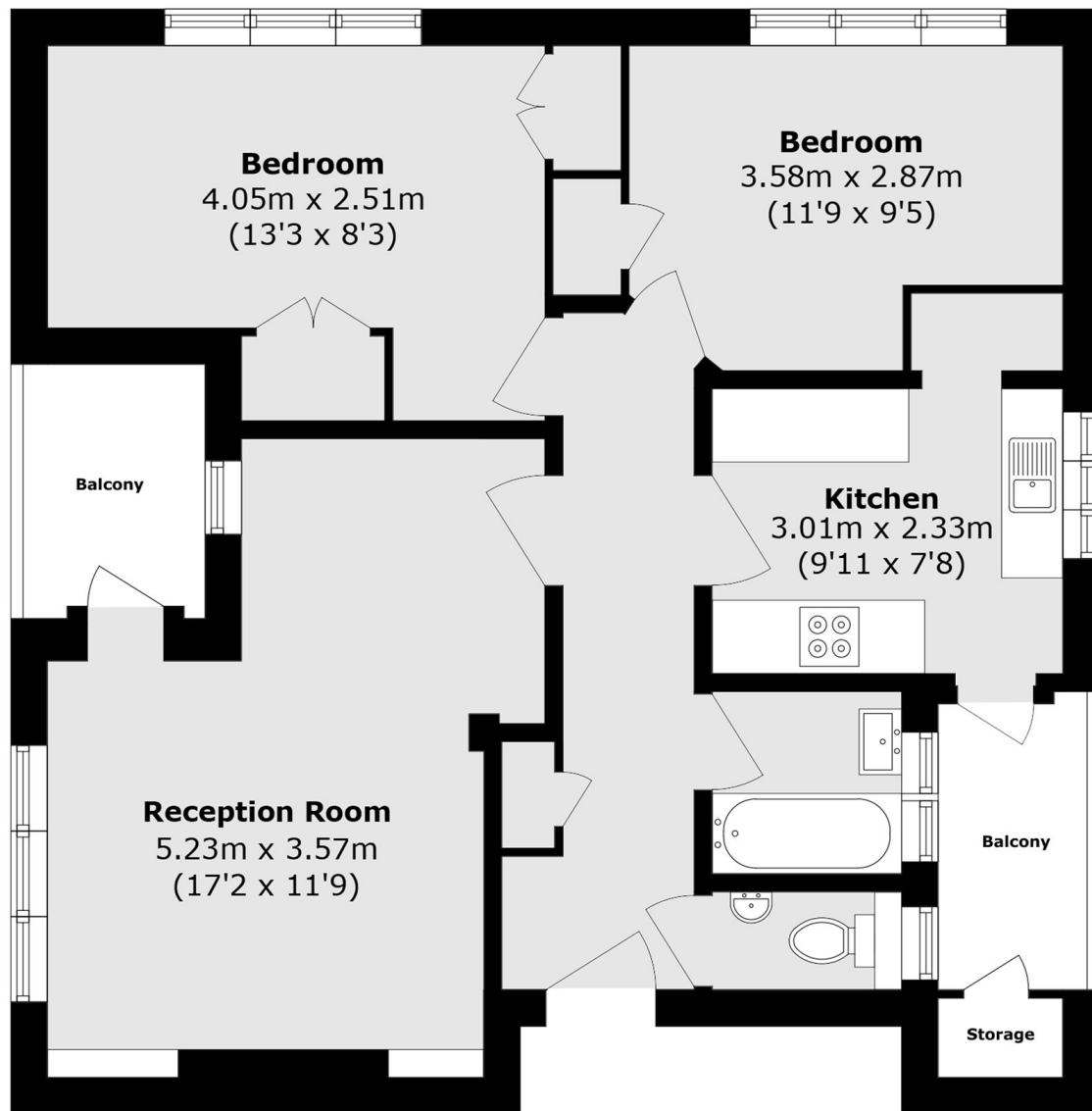
A recently modernised, ground floor two double bedroom flat within this popular development. With two private balconies, storage cupboard and long lease, this is perfect as a first time buy or downsizing.

Edensor Gardens is located within a very short walk from the River Thames and Chiswick House & Grounds. The property is also within a mile of Chiswick Station with fast trains to Waterloo.

### Features

Ground Floor  
Recently Modernised  
Two Double Bedrooms  
Two Balconies  
Separate Kitchen  
Long Lease

# Edensor Gardens, London, W4



Total area (approx.): 59.0 sq. m (635.0 sq. ft)  
balcony area (approx.): 5.1 sq. m (54.8 sq. ft)