



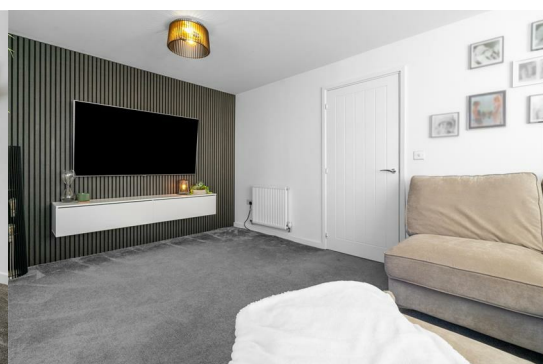
## 1 Littlebeck Way

, Hartlepool, TS25 2FJ

**Offers Over £235,000**



**NO CHAIN!!** Igomove take pride in listing this modern four bedroomed house on a new development, it provides many desirable features over three floors including; four double bedrooms ( master with en suite shower room), family bathroom to first floor, additional shower room to the second floor, beautiful dual aspect lounge, open concept kitchen diner, guest cloakroom, inviting hallway, gardens (rear is South West facing), two car driveway, garage, double glazing, gas central heating, fitted blinds, pristine decor, freehold.



Attractive facade, corner plot, immaculate garden, driveway for two vehicles to the side, garage, front door into;

Vestibule entrance.

Entrance Hall with stairs to the first floor, under stairs fitted storage cupboard, pristine decor.

Guest cloakroom comprising close coupled WC and pedestal wash basin, superb decor.

Delightful lounge with window to the front and bay window to the side elevation, immaculately presented with feature wall.

Open concept upgraded kitchen diner comprising an array of shaker style larder, wall, base and drawer cabinetry, complimentary solid surfaces, integrated oven, integrated gas hob, integrated extractor, integrated fridge freezer, integrated dishwasher, integrated washing machine, stainless one and a half bowl sink with chrome mixer tap, beautiful flooring, tasteful decor, ample dining space, French doors opening to the garden.

To the first floor landing there is a fitted storage cupboard.

Master double bedroom with front elevation window, impeccably presented and with access to;

En suite shower room comprising shower enclosure, close coupled WC and pedestal wash basin, complimentary tiling.

Bedroom two is a spacious dual aspect double, pristine decor.

The stylishly appointed family bathroom comprises freestanding bath, close coupled WC and wash basin.

To the second floor there is;

Bedroom three is another double with window to the front elevation, fitted wardrobes, excellent decor.

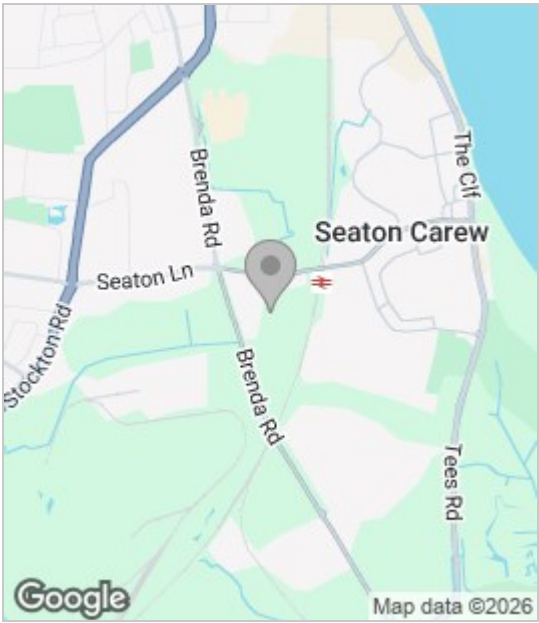
Bedroom four is a further double located to the front with extensive storage, lovely decor.

Modern shower room comprising oversized shower enclosure, close coupled WC and pedestal wash basin, complimentary tiling and excellent decor.

To the rear is an enclosed South Westerly aspect garden laid to lawn with new patio, summerhouse.

Immaculately presented throughout, this gorgeous residence can be viewed at your first opportunity by contacting Igomove.

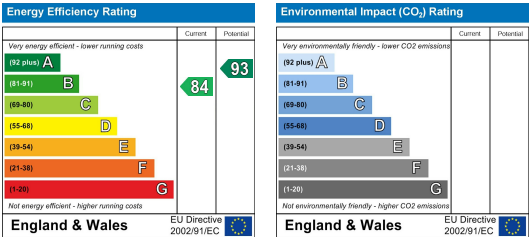
Area Map



Floor Plan



Energy Efficiency Graph



These particulars, whilst believed to be accurate are set out as a general outline only for guidance and do not constitute any part of an offer or contract. Intending purchasers should not rely on them as statements of representation of fact, but must satisfy themselves by inspection or otherwise as to their accuracy. No person in this firm's employment has the authority to make or give any representation or warranty in respect of the property.