



Wapping High Street, E1W

£695,000

 2  1  2  B

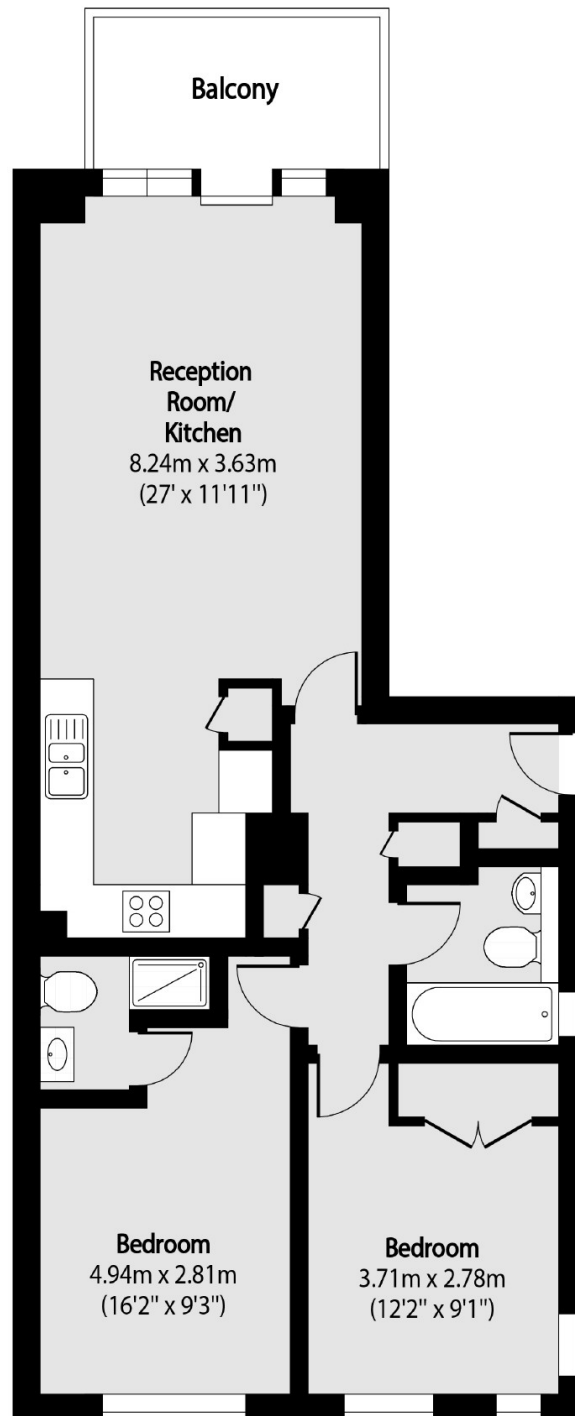
- Two Bedrooms
- Two Bathrooms
- Fitted Kitchen
- Balcony
- River Views
- Underground Parking



This spacious two-bedroom apartment is ideally located in the heart of Wapping, just moments from Wapping Station. Offered with a share of freehold, the property features a bright open-plan kitchen and living area that opens onto a private balcony with stunning river views, perfect for relaxing or entertaining. Both bedrooms are generously sized, with the principal benefiting from an ensuite, complemented by a sleek family bathroom. With contemporary finishes throughout, ample living space, and an unbeatable location near the Thames, this home offers a rare opportunity to enjoy stylish riverside living in one of East London's most desirable neighbourhoods. Being offered chain free.

Conveniently located just a 90 yards walk from Wapping Station (Overground), this property sits along the historic Wapping High Street. The area is well-connected by public transport and also easily accessible via Shadwell DLR and Thames riverside paths, making it ideal for commuters and riverside explorers alike.





Total area (approx): 64.50 sq m (694 sq. ft)

Balcony total area (approx): 5.44 sq m (59 sq. ft)

35A Wapping High Street,
London, E1W 1NR
020 7665 5589
ea2group.com