

## Oaklands Estate, SW4

£400,000

This vast, split level apartment extends to 998 and is presented in good order throughout. Comprising a reception room, a separate kitchen, three double bedrooms, a bathroom and a separate cloakroom. Offered to the market with a long lease and no onward chain.

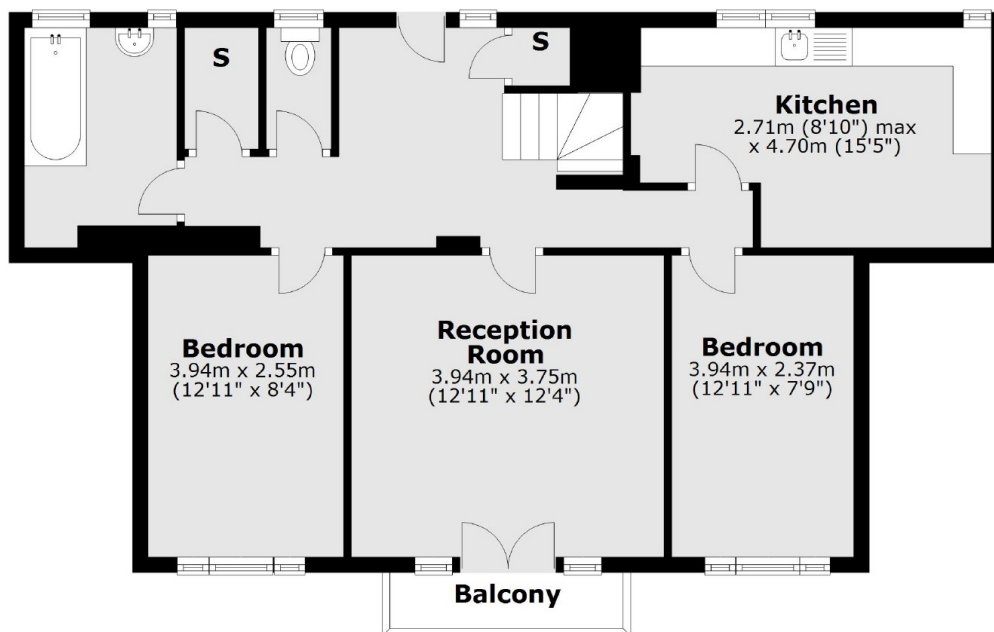
Eastman House is located between Trouville Road in the Abbeville Village and Poynders Road, well situated for the many shops, bars and restaurants of the Village and Clapham South. Clapham South station and the wide open spaces of Clapham Common a short stroll away.

### Features

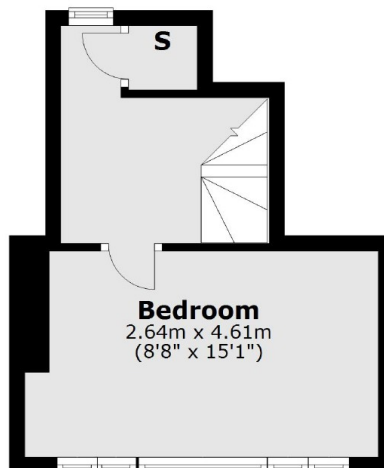
- Split Level Apartment
- Large Reception Room
- Three Bedrooms
- Balcony
- Long Lease
- Superb Location

# Oaklands Estate, London, SW4

## Third Floor



## Fourth Floor



Main area: Approx. 92.7 sq. metres (998.3 sq. feet)  
Plus balconies, approx. 2.5 sq. metres (27.2 sq. feet)