



BISHOPS MANSIONS, SW6

£3,400 per month

Newly refurbished
Two double bedrooms
Mansion block
Communal gardens

@marshandparsons
marshandparsons.co.uk

MARSH &
PARSONS

ABOUT THE PROPERTY

This stunning newly refurbished two double bedroom lateral apartment is situated on the second floor of a handsome listed mansion block. Finished to exacting standards throughout the spacious reception room is located at the front of the property with balcony overlooking tennis courts and entrance to Bishops Park. Brilliant master bedroom with ample fitted storage, generous second double bedroom and a stunning newly fitted bathroom with bath and overhead shower located off the hallway. The bright island kitchen is located at the rear of the property overlooking communal gardens and is the real focal point of this fantastic apartment.

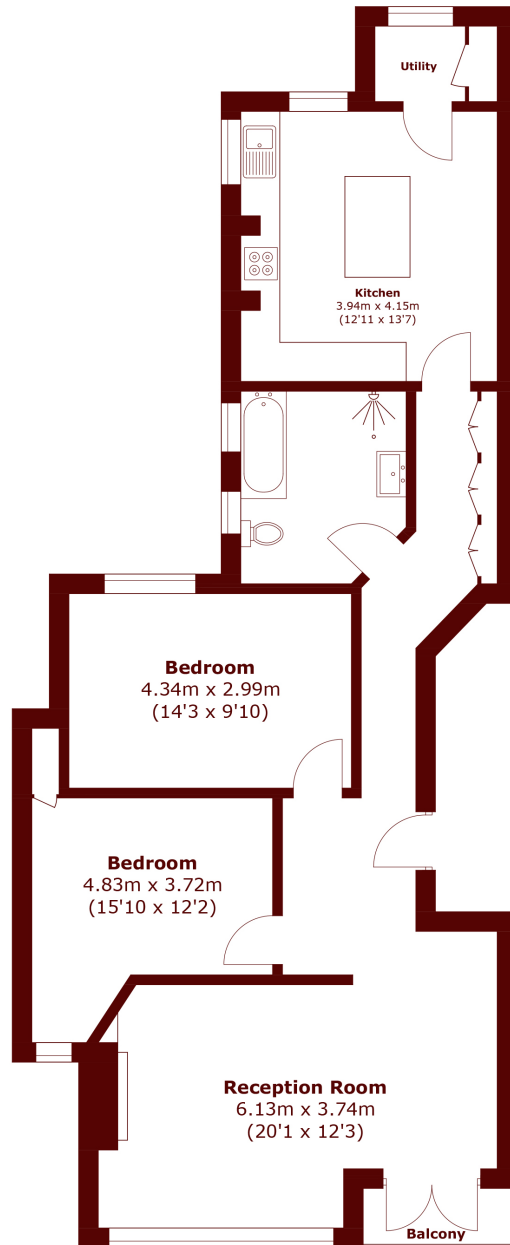
Ideally located moments from Bishops Park and a short







STEP INSIDE BISHOPS MANSIONS



Total area (approx.): 89.3 sq. m (961.2 sq. ft)
Balcony: 1.9 sq. m (20.4 sq. ft)

Bishops Park
020 7368 2480

Energy Rating: We aim to make our particulars both accurate and reliable. However, they are not guaranteed; nor do they form part of an offer or contract. If you require clarification on any points then please contact us, especially if you're traveling some distance to view. Please note that appliances and heating systems have not been tested and therefore no warranties can be given as to their good working order

**MARSH &
PARSONS**