



Pearson Square, Fitzrovia, London, W1T

£2,300,000

- Available chain free September 2026
- Duplex Apartment
- Two bedrooms
- Three bathrooms
- 1,070 sq ft
- Two private balconies
- Comfort cooling & underfloor heating
- Luxury residents' facilities
- 24-hour concierge
- Great transport links

This exceptional 1,070 sq ft duplex sits on the fourth floor of Fitzrovia's premier Pearson Square development. Overlooking quiet, landscaped courtyard gardens and the historic Fitzrovia Chapel, the easterly facing residence provides rare tranquillity in Prime Central London.

The upper level features an impressive 22-foot-wide open-plan kitchen and living area, perfect for entertaining. Floor-to-ceiling glazing opens onto a private balcony, flooding the space with natural light. The bespoke kitchen includes a central island and premium Miele appliances. Comfort cooling and underfloor heating run throughout. The lower level separates the sleeping quarters, comprising a principal suite with extensive built-in storage, a luxury en-suite bathroom, and a second private balcony. A second double bedroom and separate guest bathroom complete this level.

Residents enjoy 24-hour concierge service, lift access, a gym, a cinema, and a residents' lounge. This pet-friendly building sits moments from Charlotte Street, Soho, and Mayfair. Exceptional transport links include nearby Tottenham Court Road Station. The property is offered chain-free, with vacant possession starting this September.





ONE LONDON

PROPERTY

*Pearson Square, Fitzrovia,
London, W1T*

SIZE

1,070 sq ft

Duplex

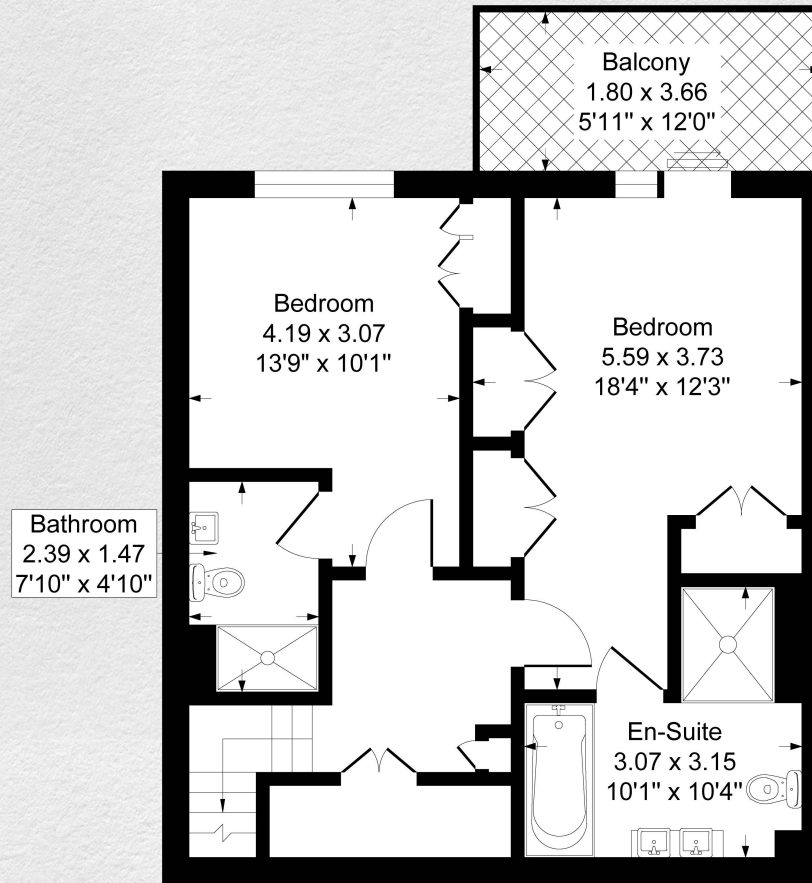
Two bedroom / Three bathroom

CONTACT

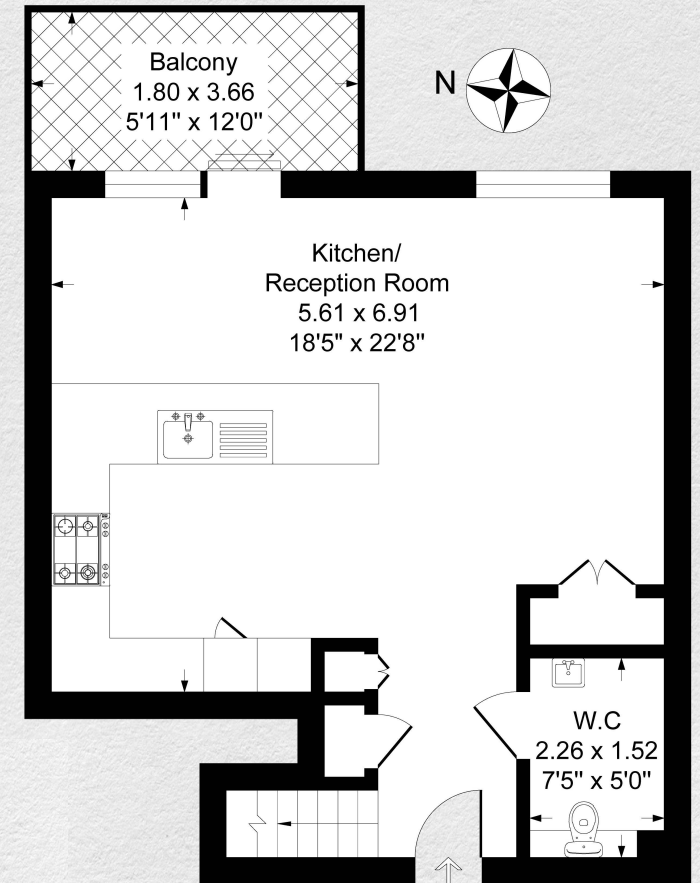
0207 856 0396

info@one-london.uk

www.one-london.uk



Third Floor



Fourth Floor

CJ704

*** For illustration purposes only. Could not be to scale.
One-London aims to ensure accuracy but is not liable
for any discrepancies.*