



Field Close
BIRMINGHAM

burchell
edwards

Field Close BIRMINGHAM B26 2NA

for sale
£147,000



Property Description

A Ground floor maisonette! This well maintained property is close to local amenities and transport links, including the nearby A45 allowing easy access to Solihull, Birmingham, the NEC and Birmingham International Airport. The accommodation briefly comprises one bedroom, lounge, kitchen, bathroom, double glazing, and central heating. Please call Burchell Edwards TODAY to arrange your viewing. 0121 742 1725!!!!

Lounge

Double glazed window to front elevation and central heating radiator.

Kitchen

Double glazed window to rear elevation, a range of wall and base units with work surface over incorporating a sink with drainer unit, fitted hob and oven, space and plumbing for washing machine, space for appliances, central heating radiator, tiled flooring and tiling to splash prone areas.

Bedroom One

Double glazed window and door to rear elevation, central heating radiator and fitted wardrobes.

Bathroom

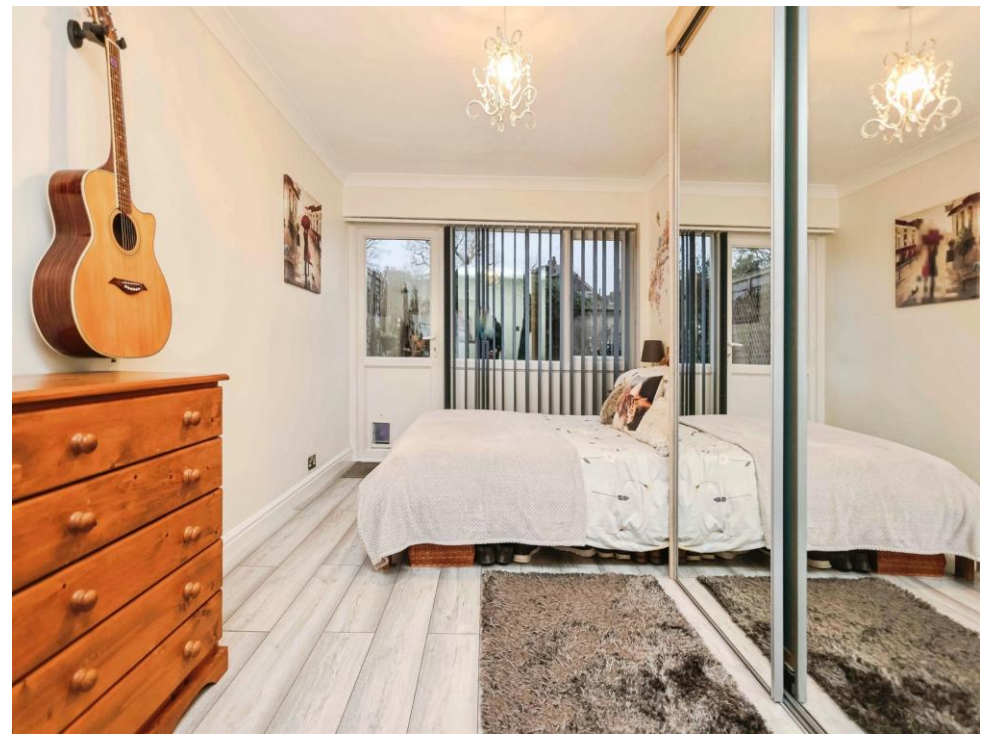
W.C, wash hand basin, walk in shower, extractor, central heating radiator and tiled flooring.

Rear Garden

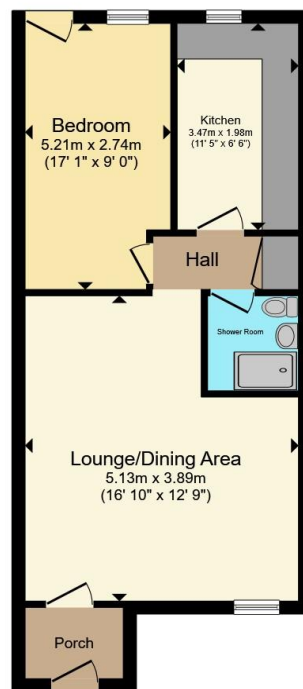
Decked area, laid to lawn and fencing to all boundaries.











Floor Plan

Total floor area 45.8 m² (492 sq.ft.) approx

This floor plan is for illustrative purposes only. It is not drawn to scale. Any measurements, floor areas (including any total floor area), openings and orientation are approximate. No details are guaranteed, they cannot be relied upon for any purpose and they do not form part of any agreement. No liability is taken for any error, omission or misstatement. A party must rely upon its own inspection(s). Powered by www.propertybox.io



To view this property please contact Burchell Edwards on

T 0121 742 1725
E sheldon@burchelledwards.co.uk

2208 Coventry Road Sheldon
 BIRMINGHAM B26 3JH

EPC Rating: C Council Tax
 Band: A

Service Charge: Ask
 Agent

Ground Rent:
 40.00

Tenure: Leasehold

view this property online burchelledwards.co.uk/Property/SHL211244

This is a Leasehold property with details as follows; Term of Lease 99 years from 14 Oct 2009. Should you require further information please contact the branch. Please Note additional fees could be incurred for items such as Leasehold packs.



1. MONEY LAUNDERING REGULATIONS Intending purchasers will be asked to produce identification documentation at a later stage and we would ask for your co-operation in order that there will be no delay in agreeing the sale. 2. These particulars do not constitute part or all of an offer or contract. 3. The measurements indicated are supplied for guidance only and as such must be considered incorrect. Potential buyers are advised to recheck measurements before committing to any expense. 4. We have not tested any apparatus, equipment, fixtures, fittings or services and it is in the buyers interest to check the working condition of any appliances.

Burchell Edwards is a trading name of Connells Residential which is registered in England and Wales under company number 1489613, Registered Office is Cumbria House, 16-20 Hockliffe Street, Leighton Buzzard, Bedfordshire, LU7 1GN. VAT Registration Number is 500 2481 05.

See all our properties at www.burchelledwards.co.uk | www.rightmove.co.uk | www.zoopla.co.uk

Property Ref: SHL211244 - 0006