



Goldhawk Road, W12

£550,000

A well appointed, duplex apartment located on a popular residential road between Hammersmith and Shepherds Bush. Arranged laterally, the property offers over 700sqft (67.5sqmts) of living space offering great value in a central location. As you enter the apartment there is a fully modernised separate, fitted kitchen complete with plenty of cabinets, worktop space and fitted appliances. The property comprises of a spacious reception room with plenty of natural light from a large double door leading onto the private balcony. The property holds two generously sized double bedrooms with fitted storage and a family bathroom.

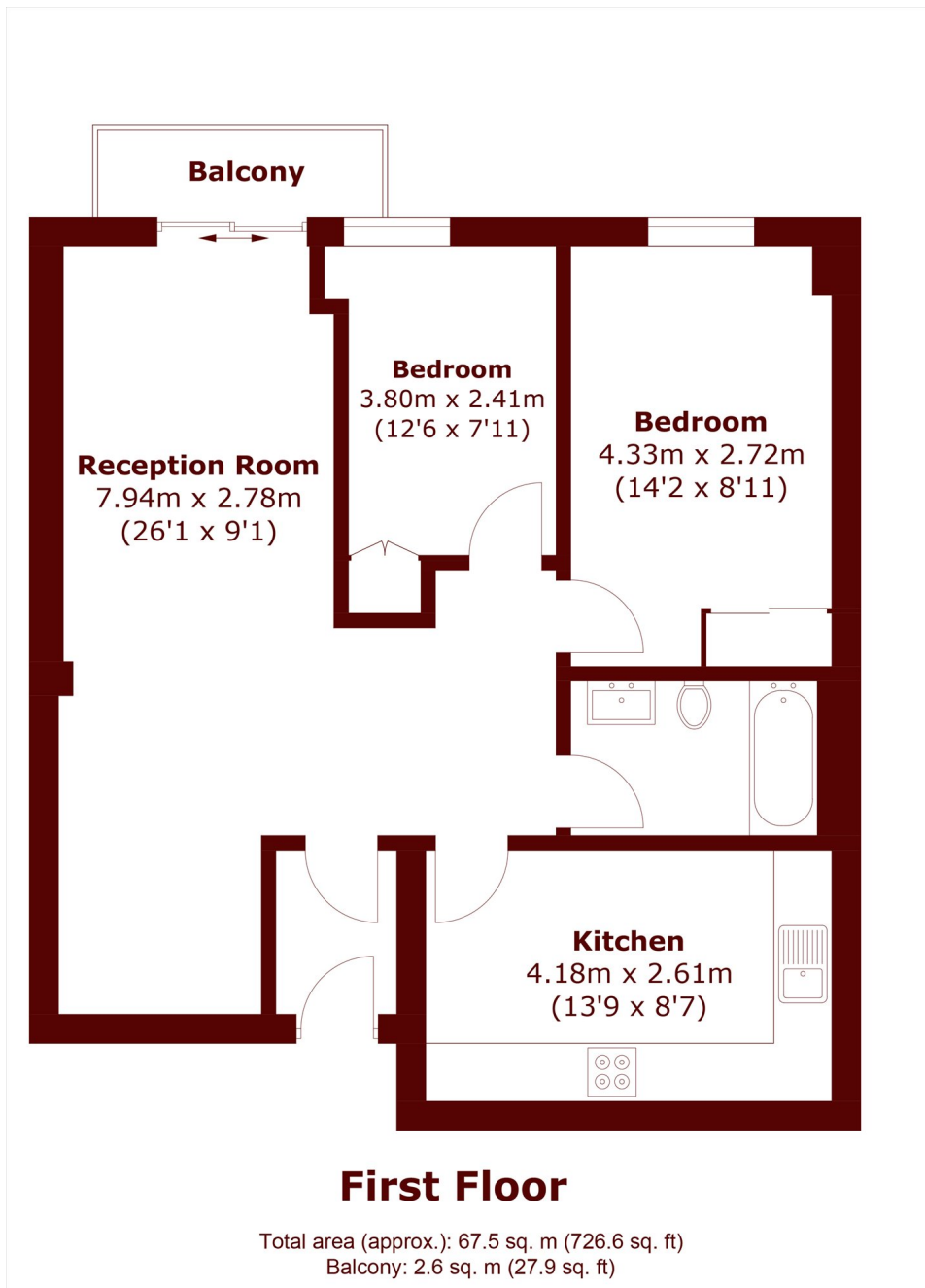
This excellent home is a perfect fit for those looking to move to a highly sought after part of west London. Offered to the market with no onward chain and a long lease.

Goldhawk Road is a popular road on the borders of Hammersmith and moments from the hustle and bustle of Shepherd's Bush. The property is under a mile from the popular Westfield Shopping Centre and an array of independent coffee shops, restaurants and bars are on your doorstep on Goldhawk Road. Goldhawk Road Underground is less than 100m away, Shepherds Bush Underground and Overground, and Hammersmith Station are under a mile away offering excellent connections in and out of the city.

• Two Double Bedrooms • Private Balcony • Long Lease • Central Location • Separate Kitchen • Brand New Conversion •

FLETCHERS

ESTATE AGENTS



Fletchers Brook Green Sales
144 Shepherds Bush Road, Hammersmith, London, W6 7PB
020 7603 1415
brookgreensales@fletcherestates.com

Energy Rating: . We aim to make our particulars both accurate and reliable. However they are not guaranteed; nor do they form part of an offer or contract. If you require clarification on any points then please contact us, especially if you're traveling some distance to view. Please note that appliances and heating systems have not been tested and therefore no warranties can be given as to their good working order.