



Guide Price

£230,000

Freehold

2x  1x  1x 

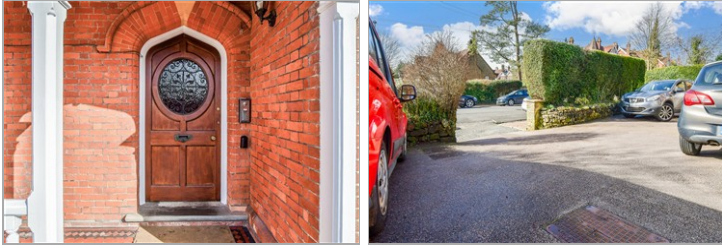
**Boyne Park, Tunbridge
Wells, Kent, TN4**

OVER 60?

Secure this property
for up to **59% less!**

Wards

Helping you move forwards



Main features

- Chain free spacious apartment
- Off-street parking and large communal gardens
- Generously sized with lots of character
- Lots of potential for modernisation throughout
- Sought after location, close to transport and local amenities

Accommodation

FIRST FLOOR

Hallway

Lounge: 18'8 x 16'9 (5.69m x 5.11m)

Kitchen: 9'3 x 4'9 (2.82m x 1.45m)

Bedroom 1: 13'9 x 9'6 (4.19m x 2.90m)

Bedroom 2: 10'7 x 6'2 (3.23m x 1.88m)

Bathroom: 9'1 x 7'7 (2.77m x 2.31m)

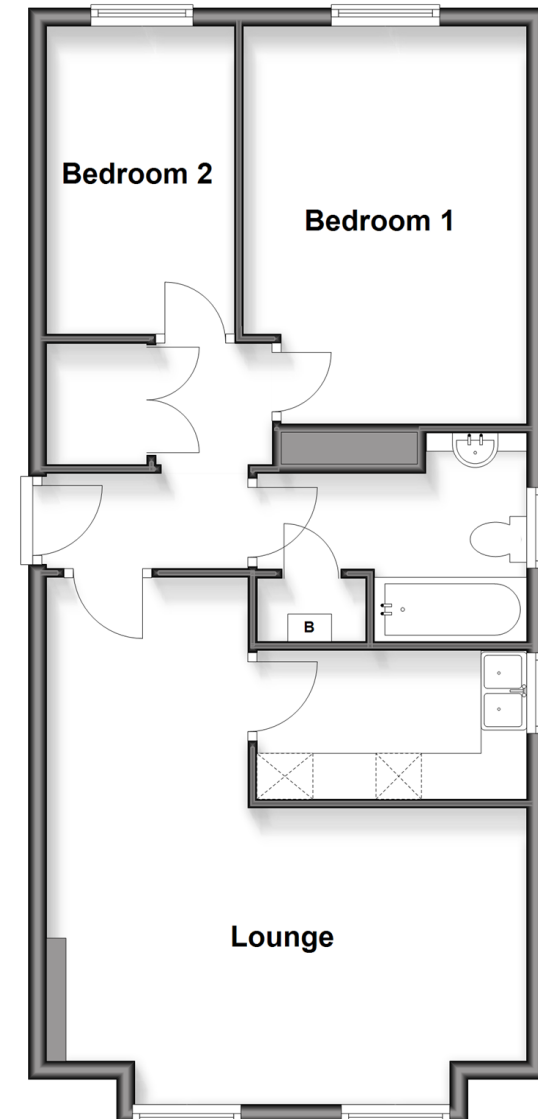
OUTSIDE

Off-Street Parking Space

Communal Gardens

First Floor

Approx. 60.9 sq. metres (655.8 sq. feet)



Call Tunbridge Wells - 01892 542767 ■ wardsof Kent.co.uk

■ Through a Homewise Home For Life Plan people aged 60+ can secure this property for up to 59% less, by purchasing a Lifetime Lease



14134215/20260319/HG/ER