

5 Uplands

Cuddington, Northwich

Three-bedroom detached bungalow on Delamere Park with field views, spacious living, off-road parking, and access to pool, tennis courts, and bar.
Council Tax band: E

Tenure: Freehold

EPC Energy Efficiency Rating: D

EPC Environmental Impact Rating: E

- Detached Bungalow
- Three Bedrooms
- Driveway
- Garage
- Overlooking Fields
- Lounge and Dining Room
- Front & Rear Gardens
- Set on Popular Delamere Park
- Access to Park Facilities
- Video Tour Available

















5 Uplands, Delamere Park

DETAILS

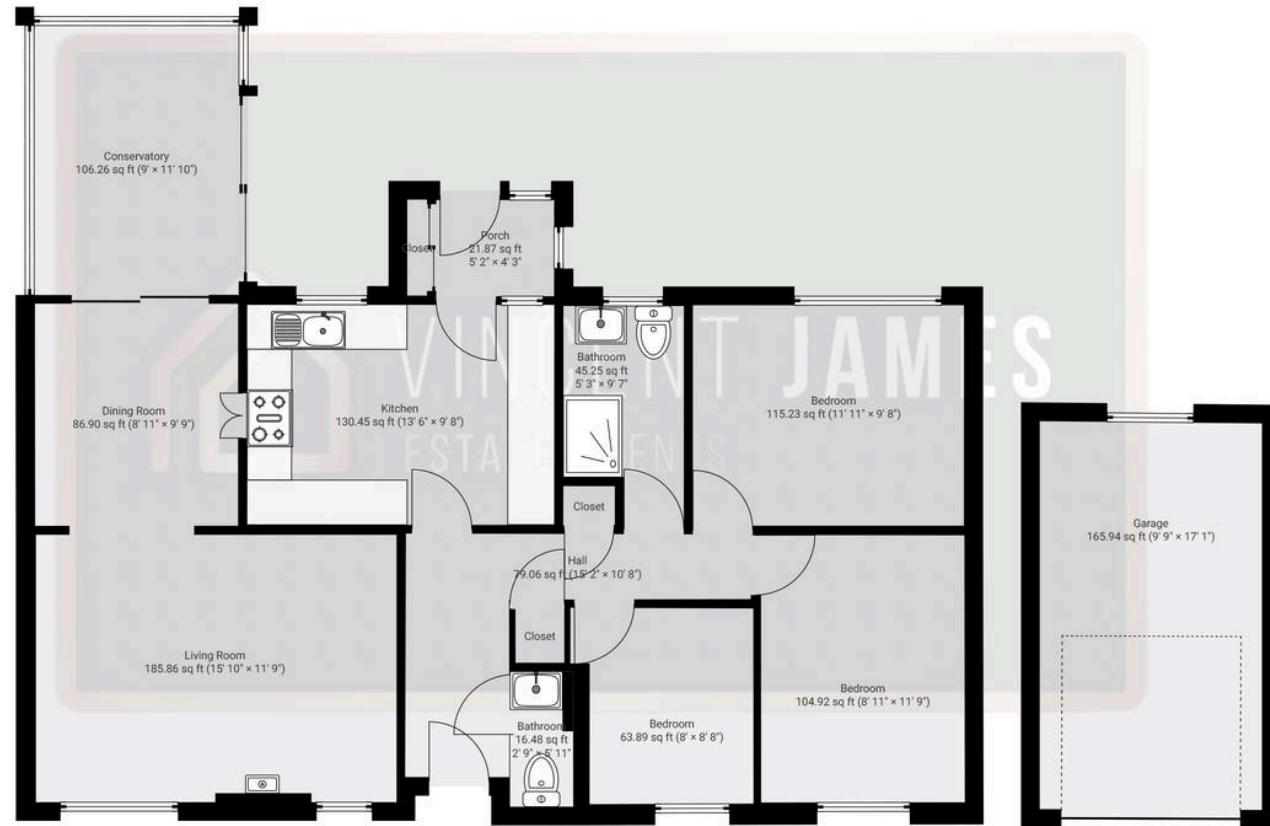
Total area: 1134.06 sq ft
Living area: 968.12 sq ft
Floors: 1
Rooms: 15

THIS FLOORPLAN IS PROVIDED WITHOUT WARRANTY OF ANY KIND. VINCENT JAMES ESTATE AGENCY DISCLAIMS ANY WARRANTY INCLUDING, WITHOUT LIMITATION, SATISFACTORY QUALITY OR ACCURACY OF DIMENSIONS.



▼ Ground Floor

TOTAL AREA: 1134.06 sq ft • LIVING AREA: 968.12 sq ft • ROOMS: 15



Vincent James Estate Agents

87 Witton Street, Northwich - CW9 5DR

01606663939 • hello@vincentjamesestateagents.co.uk • www.vincentjamesestateagents.co.uk/