

**JAMES NEAVE**  
THE ESTATE AGENTS

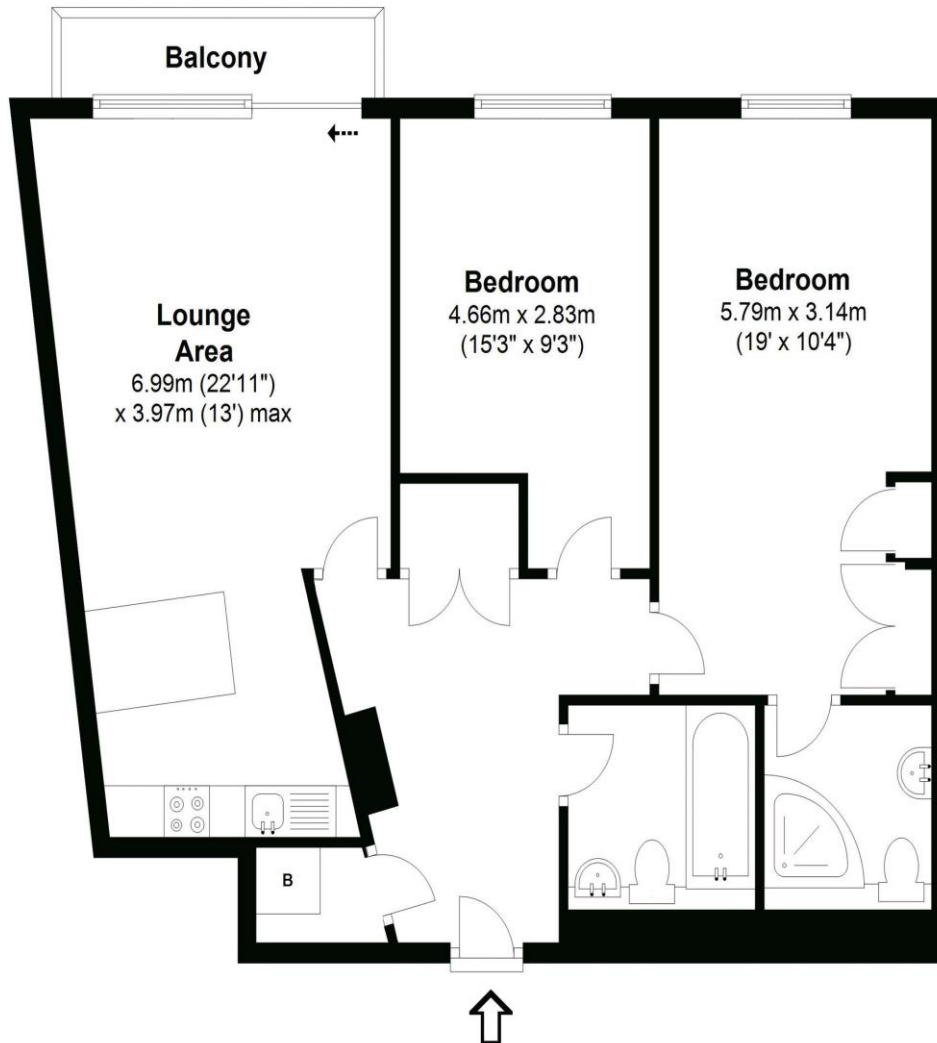


**526 The Heart, Walton-On-Thames, Surrey, KT12 1GF**

**£1750pcm + Initial deposit**



Approximate gross internal floor area 67 Sq M 721 Sq Ft



Whilst every attempt has been made to ensure the accuracy of the floor plan contained here, measurements are approximate and no responsibility is taken for any error, omission, or mis-statement. The plan is for illustrative purposes only and should be used as such by any prospective purchaser.

A well-presented fifth-floor, two-bedroom apartment situated within the highly sought-after Heart development, overlooking the landscaped communal gardens. The property features a private balcony, a spacious principal bedroom with en-suite shower room, a modern family bathroom, and a fitted kitchen with breakfast bar opening onto the living area. Additional benefits include secure underground parking for one vehicle and a concierge service. Offered in excellent condition and available from 18 July 2026 on an unfurnished basis. EPC

Rating: C.



**AGENTS NOTES:** These details do not constitute any part of an offer or contract. In issuing them we do not have any authority to give any warranty or representation whatsoever in respect of this property. These details are provided without any responsibility on our part or the part of the vendors. No statements in these details are to be relied upon as representations of fact and purchasers should satisfy themselves by inspection or otherwise as to the accuracy of the statements contained therein.

**Equipment:** We have not tested the equipment or central heating system mentioned in these particulars and purchasers are advised to satisfy themselves as to their working order and condition.

**Measurements:** Great care is taken when measuring but measurements should not be relied upon for ordering carpets, equipment, etc.