



Flat 11, Haymarket Rise Linden Road, Bedford

Guide Price £225,000



Flat 11

Haymarket Rise Linden Road, Bedford

****MODERN 2 BEDROOM 1st FLOOR APARTMENT
IN SHOW HOME CONDITION OFFERED WITH
FURNITURE & NO UPPER CHAIN****

Council Tax band: B

Tenure: Leasehold

EPC Energy Efficiency Rating: B

EPC Environmental Impact Rating: B

- STUNNING 2 BEDROOM APARTMENT IN SHOW HOME CONDITION
- FIRST FLOOR
- TWO DOUBLE BEDROOMS
- OPEN PLAN KITCHEN / LIVING / DINING ROOM
- BALCONY from both LIVING ROOM & MASTER BEDROOM
- GOOD LONG LEASE - circa 245 YEARS REMAINING
- ALLOCATED PARKING SPACE (Bay C) & VISITOR SPACES AVAILABLE
- AVAILABLE TO PURCHASE WITH ALL EXISTING FURNITURE INCLUDED (or SELECTED ITEMS) IF SO DESIRED
- LIFT ACCESS + SECURE BIKE & BIN STORAGE
- OFFERED WITH NO UPPER CHAIN



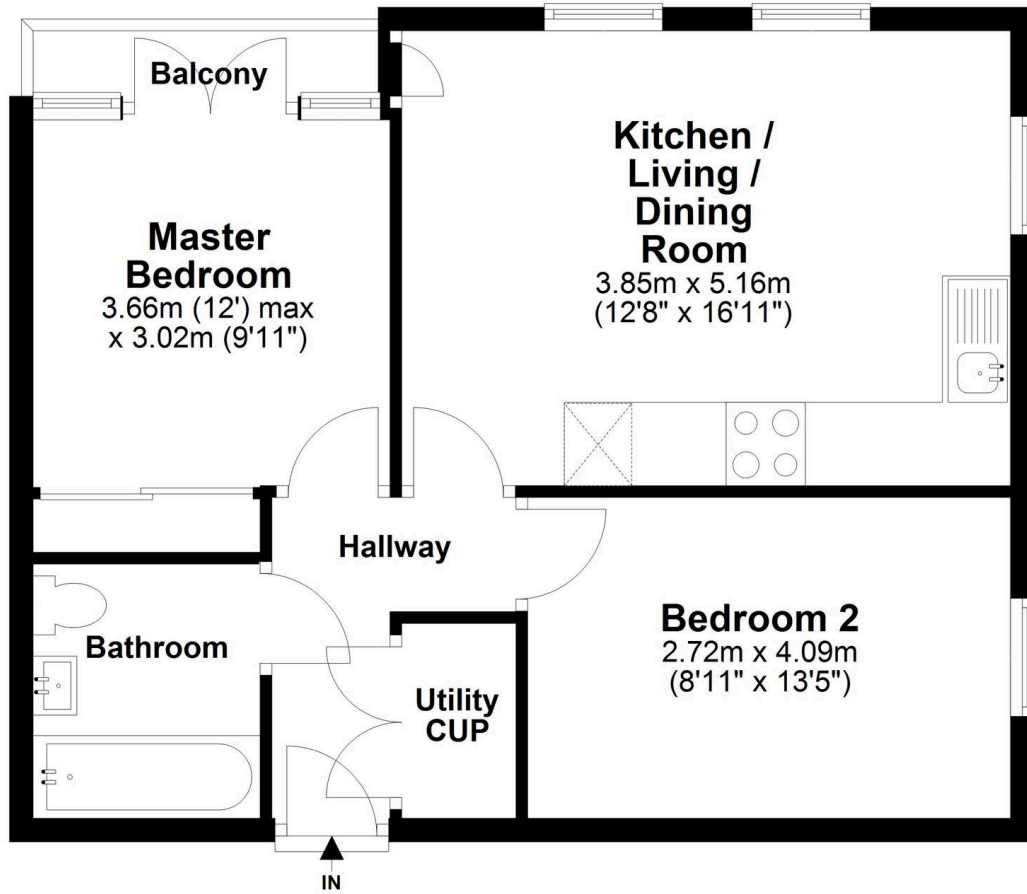


ALLOCATED PARKING

1 Parking Space



First Floor Apartment





Compass Elevation

Compass Elevation, 14-16 Bromham Road - MK40 2QA

01234271566 • bedford@elevationstateagents.com • compasselevationbedford.com/

