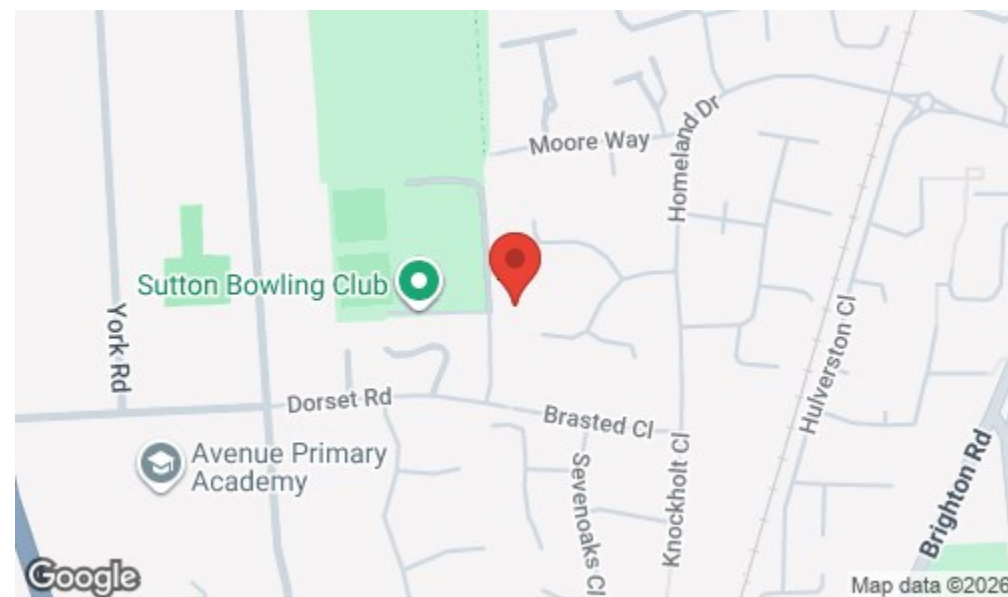


## Location



### Important Note

Centro Residential Sales and Lettings limited have not tested any services, heating system, electrical system, appliances, fixtures and fittings, that may be included in this property and would advise interested parties to satisfy themselves as to their condition or investigating the presence of any deleterious materials.

Viewing: Strictly by appointment through:

**CENTRO RESIDENTIAL SALES AND LETTINGS LIMITED**

Tel: 020 8401 5000

E-mail: [residential@centro.plc.uk](mailto:residential@centro.plc.uk)

See a selection of our properties at [www.centro.plc.uk](http://www.centro.plc.uk)

**£2,750 Per Month -**  
Hadleigh Drive, Sutton, Surrey SM2 5BF



### Description

- Family Home
- Four Bedrooms
- Two Bathrooms
- Garage
- Driveway Parking
- Cloakroom
- Private Garden
- Unfurnished
- Council Tax Band F
- EPC Rating C

### Features

- Gas Central Heating
- Double Glazing
- Neutral Decor

### What you need to know

- Term: 12 months
- Rent: £2750pcm exclusive of bills
- Security deposit: £3173.00
- Council Tax Band F
- Energy Rating: C



## Accommodation

### Additional Photo



### Just Centro's Opinion...

A beautiful four-bedroom, two Bathroom family home set within a lovely modern development in Sutton/Belmont. This lovely home offers a spacious double reception with living and dining space, a modern fitted kitchen that leads to a private rear patio and grassed garden.

Upstairs boast the master bedroom with built in storage and en-suite shower room, a further two double bedrooms, one single bedroom and a family bathroom suite.

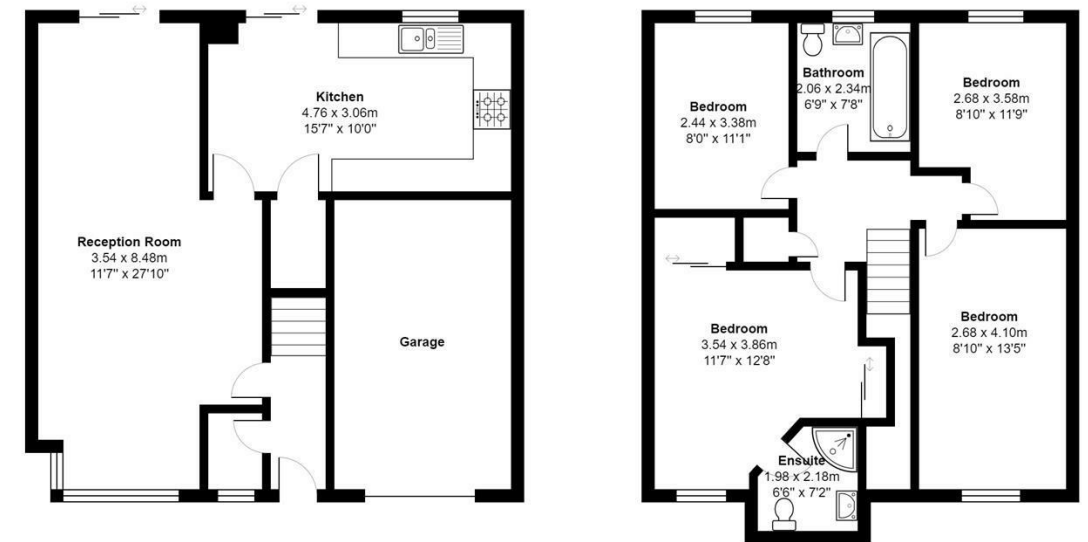
Others features include, garage, Driveway Parking for two cars, a Downstairs Cloakroom, Dishwasher, Gas central heating, Full double glazing, Ample storage and Neutral decor.

Location is superb with a variety of transport links close including Belmont Rail Station and Sutton Rail Station. For Schools you also have a wide range of options, some of which include Avenue Primary, Overton Grange Secondary School and Harris Academy.

Offered unfurnished and available in November viewings are highly recommended.

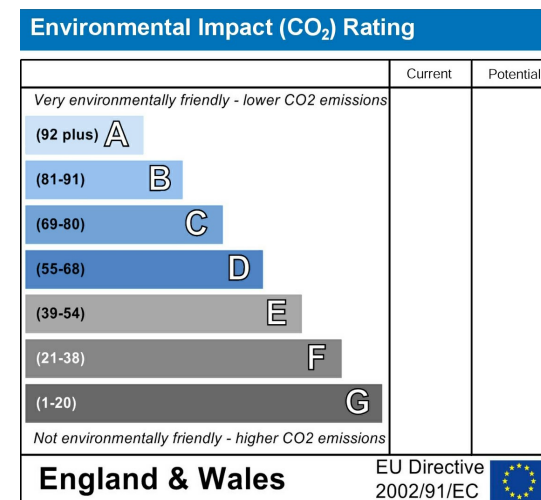
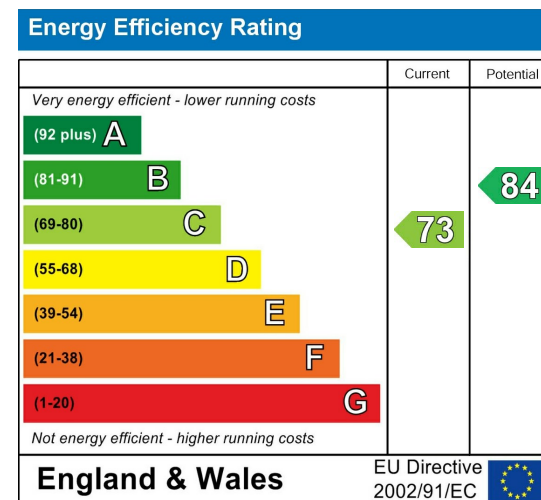
### Floor Plan

Hadleigh Drive, SM2 5BF



All measurements are approximate and for display purposes only

### EPC Graph



For illustration purposes only