





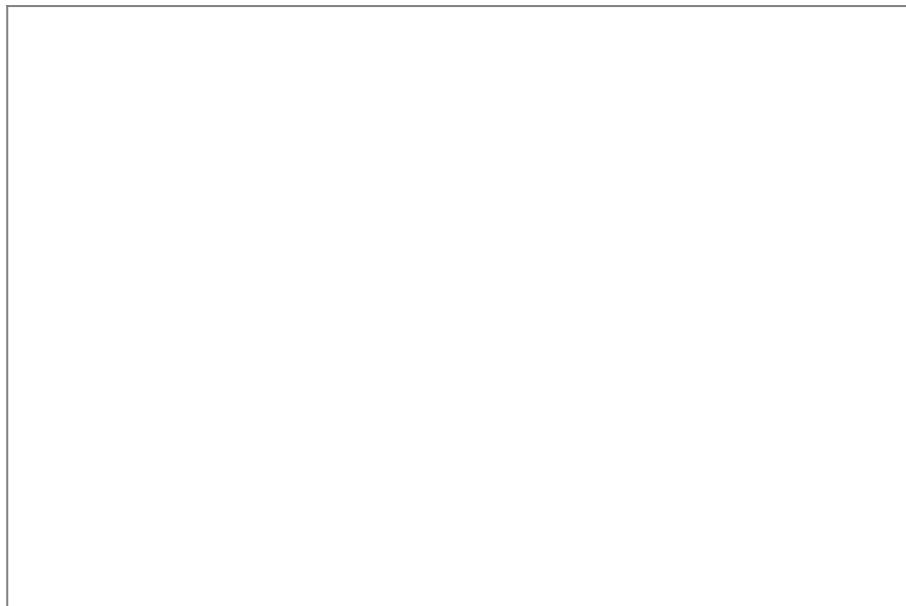
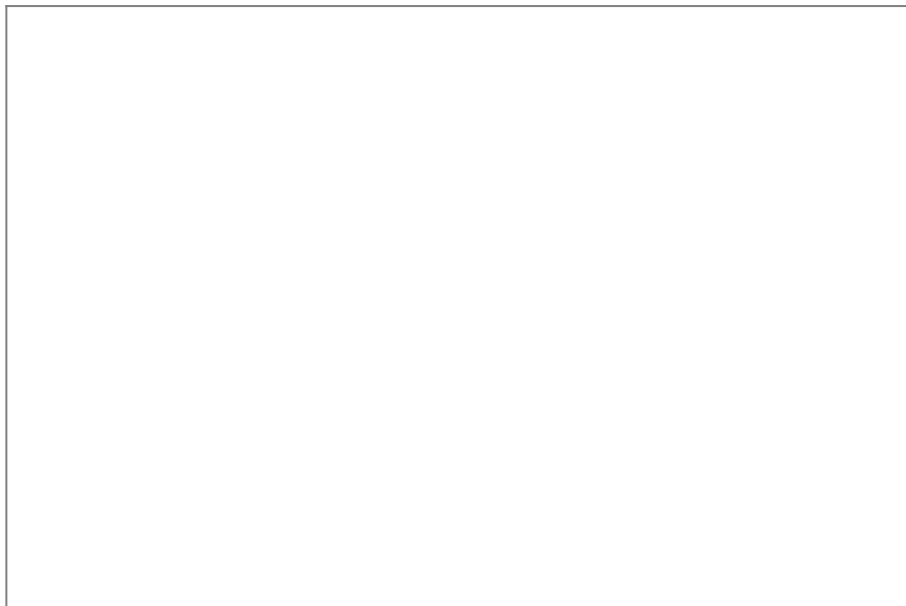
168 Astley Close, Shaw OL2 7DH

£125,000

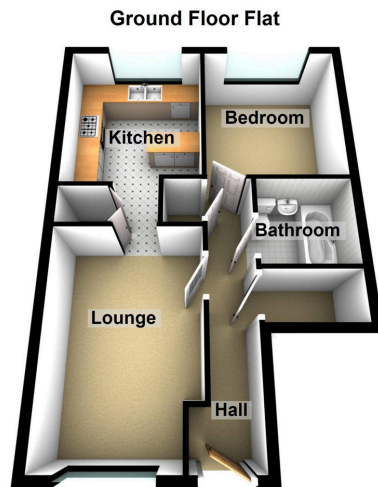
 1  1  1



- Ground Floor Flat
- Cul De Sac Location
- Close To Shaw Centre
- EPC -
- One Double Bedroom
- Ideal FTB Home
- No Chain



Offered for sale with NO CHAIN therefore VACANT POSSESSION on completion is this one bedroom ground floor flat situated in a small residential cul-de-sac within approximately three quarters of a mile of Shaw town centre and its amenities plus local transport links including the metro link. Ideally suited to an array of buyers from those looking to buy their first home to those looking for one level living or buy to let investors looking to add to their portfolio. The property is in need of a degree of cosmetic updating but offers excellent potential. Internally the well proportioned living space comprises entrance hallway with good size storage cupboards, lounge, kitchen one double bedroom and a bathroom. Outside the property has a paved gated forecourt garden with useful brick built storage shed.



Chadderton Office

509 Middleton Road,
Chadderton, Oldham,
OL9 9SH

chadderton@kirkham-property.co.uk
t: 0161 626 5688