



Fulham Road, SW3

£1,269 Per week

A three double bedroom, two bathroom apartment to let in a very well known mansion block in Chelsea. The property has been finished to a very high standard throughout and is ideal for someone looking to be close to all amenities and transport links.

Thurloe Court is a well-maintained block with a daytime porter and is located in fashionable Brompton Cross - just a short walk from South Kensington and Sloane Square Underground.

Features

- Three Double Bedrooms
- Two Bathrooms
- Fourth Floor
- Lift Access
- Day Time Caretaker
- Prestigious Location



Fulham Road, SW3

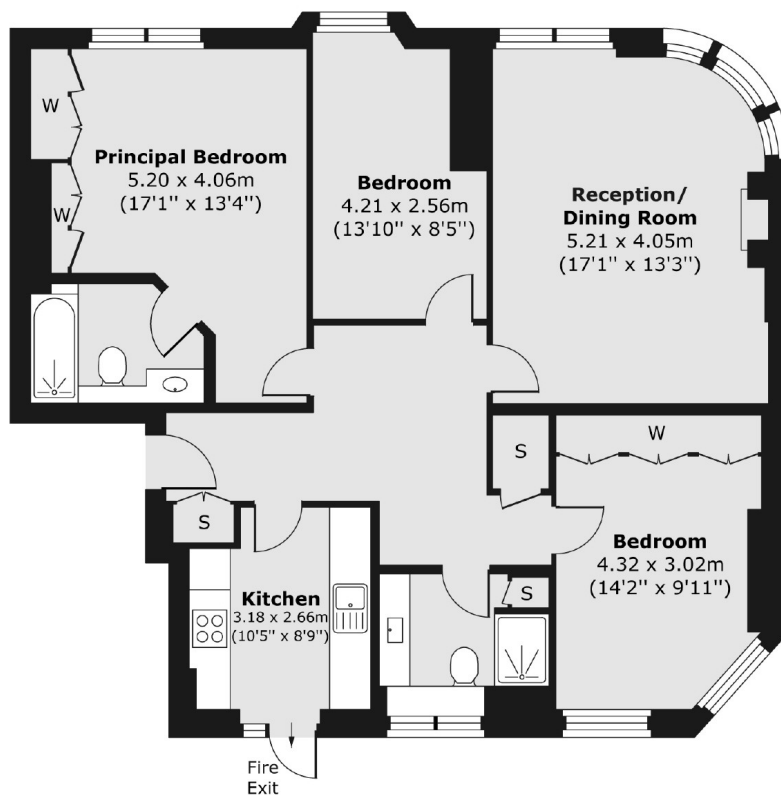
The property has been refurbished throughout and benefits from so much natural light and fantastic views overlooking Pelham Crescent.

The apartment has a very spacious living room, separate kitchen with modern integrated appliances, three bedrooms and two bathrooms, one of which is en suite in the master bedroom, There is very good storage throughout the property.



Fulham Road, London, SW3

Fourth Floor



Total area (approx.) 92.76 sq. m (998 sq. ft)

Dexters

Chelsea and Belgravia
45 Sloane Avenue
London
SW3 3DH
Lettings
020 7590 9500

Energy Rating: D. We aim to make our particulars both accurate and reliable. However they are not guaranteed; nor do they form part of an offer or contract. If you require clarification on any points then please contact us, especially if you're traveling some distance to view. Please note that appliances and heating systems have not been tested and therefore no warranties can be given as to their good working order.

 **RICS** | Regulated
Estate Agent
and Letting Agent

dexters.co.uk