



Jordan fishwick

Apt 21 Chepstow House, 60 Chepstow
£1,050 Per Calendar Month



Chepstow House Manchester M1 5JF

£1,050 Per Calendar Month



The Property

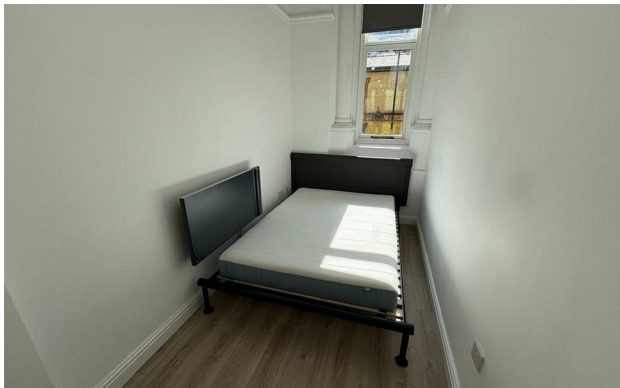
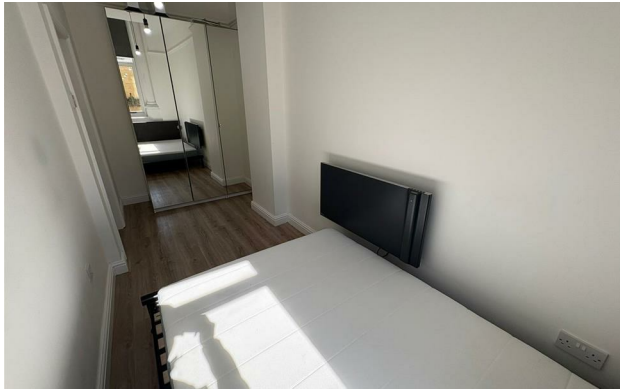
Available Now. Jordan Fishwick are pleased to offer this one bedroom apartment in the popular Grade 2 listed Chepstow House development. The apartment boasts high ceilings throughout. It briefly comprises of: entrance hallway, lounge/diner, kitchen, double bedroom, and a well appointed bathroom suite. No Parking & No Pets allowed. Tax Band C. EPC Rating E.

VIDEO/ PHOTO OFFERS NOT ACCEPTED - PLEASE CALL TO BOOK A VIEWING

- Available Now
- One bedroom property
- Grade 2 Listed building
- High ceilings
- Tax Band C
- EPC Rating E
- No Parking
- Close to City Centre
- Close to Universities



Energy Efficiency Rating		
	Current	Potential
Very energy efficient - lower running costs		
(92 plus) A		
(81-91) B		
(69-80) C		75
(55-68) D		
(39-54) E	52	
(21-38) F		
(1-20) G		
Not energy efficient - higher running costs		
England & Wales	EU Directive 2002/91/EC	





These particulars are believed to be accurate but they are not guaranteed and do not form a contract. Neither Jordan Fishwick nor the vendor or lessor accept any responsibility in respect of these particulars, which are not intended to be statements or representations of fact and any intending purchaser or lessee must satisfy himself by inspection or otherwise as to the correctness of each of the statements contained in these particulars. Any floorplans on this brochure are for illustrative purposes only and are not necessarily to scale.

Offices at: Offices at Chorlton, Didsbury, Disley, Hale, Glossop, Macclesfield, Manchester Deansgate, Manchester Whitworth Street, New Mills, Sale, Wilmslow and Withington