



Trindles Road, South Nutfield

Guide Price £575,000 - £600,000





“

We have loved raising our young family in this home. Our favourite room is the open living space where we've created wonderful memories hosting friends and family. A weekend favourite has been walking to Priory Farm for a hot chocolate.

”



GUIDE PRICE - £575,000 - £600,000

Tucked away along Trindles Road in the heart of South Nutfield, this home has been thoughtfully reimagined, blending character with a calm, contemporary feel throughout.

The ground floor has been extended to create a striking open-plan kitchen and dining space that naturally becomes the centre of daily life. Just over 18ft in length and arranged around a generous central island, it's designed for gathering — from slow weekend breakfasts to evenings with friends. Clean-lined cabinetry, soft neutral tones and considered finishes give it an on-trend, refined look, while bifolding doors open to the east-facing garden, filling the room with morning light. A working log burner adds warmth and atmosphere to the space.

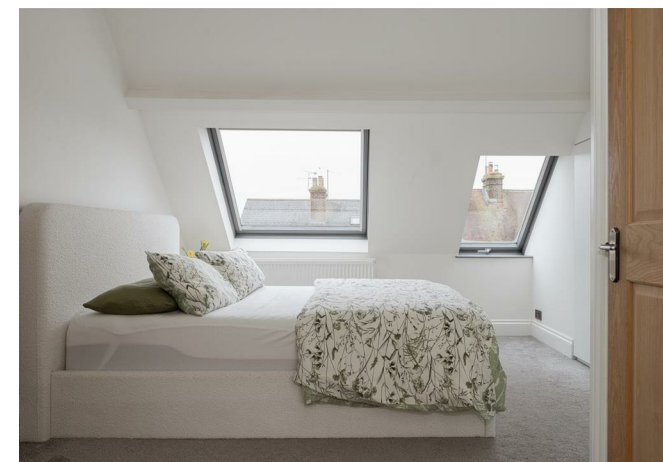
To the front, the separate living room offers a more intimate setting, with a cosy feel that contrasts beautifully with the openness to the rear.



Upstairs, the layout feels balanced and well planned. Two comfortable double bedrooms sit on the first floor, served by a modern family bathroom. The top floor has been transformed into a generous principal suite, measuring over 14ft, complete with its own en suite — a peaceful retreat away from the rest of the house.

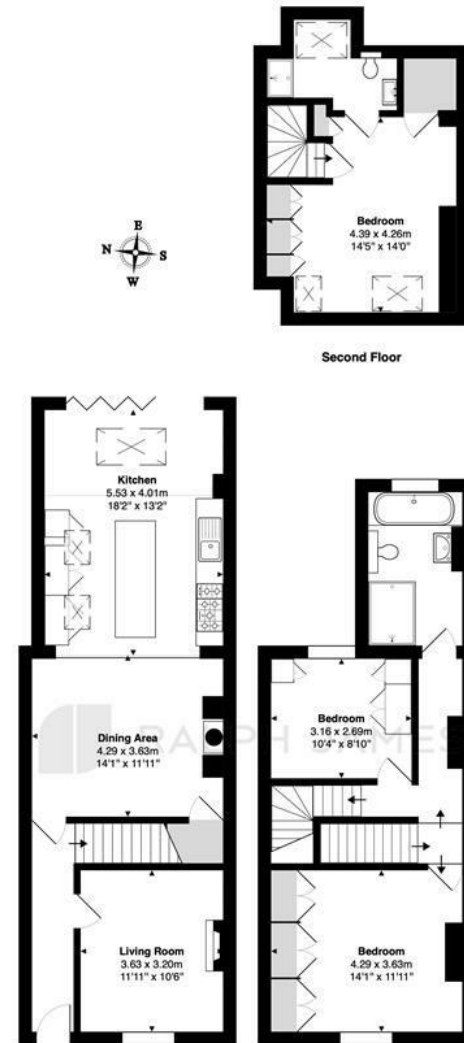
Outside, the east-facing garden provides a bright, welcoming backdrop to the kitchen, while a private driveway to the front offers the practicality of off-street parking.

South Nutfield is one of those villages people move to and rarely want to leave. There's a genuine sense of community, a well-regarded local school, a village shop for everyday essentials and The Station Pub as a natural meeting point. Nutfield Station is within easy reach for commuting into London, and open countryside surrounds the village, offering countless walks.



Need to know

- Extended three double bedroom family home in the heart of South Nutfield Village.
- Stunning open plan kitchen/dining room with central island and bifolding doors to the garden.
- Separate front reception room with decorative fireplace, ideal as a cosy living space.
- Principal bedroom suite occupying the entire second floor with modern en suite shower room.
- Two further double bedrooms on the first floor served by a contemporary family bathroom.
- Beautifully refurbished throughout with a neutral décor and high-quality finishes.
- Well sized, East facing garden ideal for entertaining or relaxation.
- Private driveway providing off-street parking.
- Walking distance to Nutfield Station with direct links to London, plus village shop, pub and well-regarded primary school nearby.
- Council Tax Band E.



Ground Floor First Floor

Trindles Road, South Nutfield, Redhill

Total Area: 127.4 m² ... 1372 ft²

FOR ILLUSTRATIVE PURPOSES ONLY.

Whilst every attempt has been made to ensure the accuracy of the floor plan shown, all measurements, positioning, fixtures, features, fittings and any other data shown are an approximate interpretation for illustrative purposes only and are not to scale.

No responsibility is taken for any error, omission, mis-statement or use of data shown.

The above statement applies to both 'Still Moving London LTD' and the Company or individual displaying this floor plan.

Unauthorised reproduction prohibited.

© Still Moving London LTD (www.stillmoving.london)

RALPH JAMES

Interested?

redhill@ralphjames.co.uk
01737 765 555

ralphjames.co.uk