



20 Hawthorn Court

Hawthorn Road



20 Hawthorn Court, Hawthorn Road, Gosforth, NE3 4TZ

Well Presented First Floor Apartment Boasting Two Double Bedrooms, Ensuite & Family Bathroom, Substantial Living/Dining Room, Generous Kitchen & Allocated Parking!

Hawthorn Court was constructed in 2001 on the former site of the police station on Hawthorn Road and they are ideally located for very convenient and immediate access to the High Street with its shops, banks and offices. The rear courtyard and parking are secure with electrically operated gated access. The communal areas are attractive and well presented with secure entry access to the front and rear.





The accommodations includes: Communal entrance at ground floor level with stair access to all floors | Private entrance at first floor level | A lovely entrance reception hall with storage cupboard | Access to the large open lounge/dining room | Kitchen/breakfast room which benefits from integrated appliances and houses the newly installed boiler | Master bedroom with built in wardrobes and storage cupboard with ensuite shower room/WC | Double bedroom with built in double wardrobe | Family bathroom which offers a three piece suite.

Externally, the property enjoys the use of one allocated parking bay within the secure gated development.

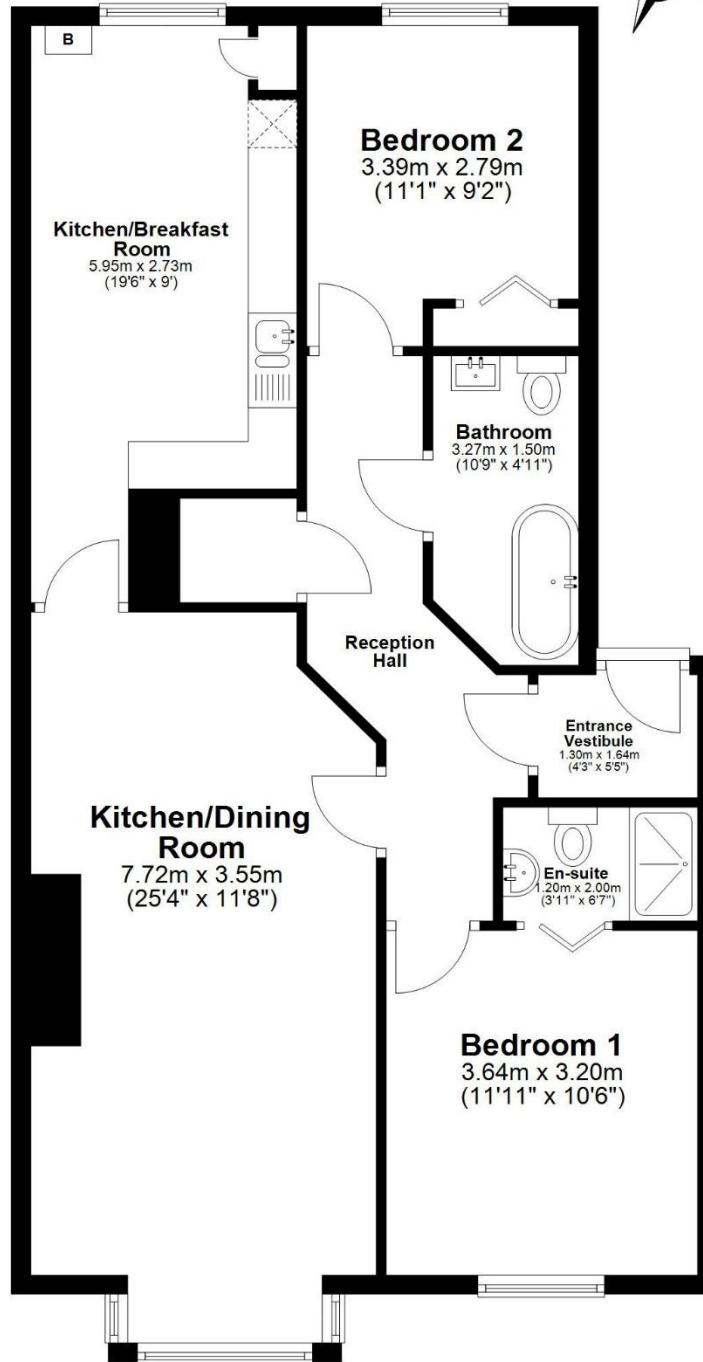
Offered to the market with No Onward Chain, early viewings are strongly recommended.

Services: Mains gas, electricity, water & drainage | Tenure: Leasehold | Lease Remaining: 99 Years | Service Charge: £2,472.76 Per Annum | Ground Rent: £90 Per Annum | Council Tax: Band C | EPC: Rating B

Price Guide: Guide Price £220,000

First Floor

Approx. 83.4 sq. metres (897.9 sq. feet)



Total area: approx. 83.4 sq. metres (897.9 sq. feet)

20 Hawthorn Court, Hawthorn Road, Gosforth, -



SANDERSON
YOUNG

Regional Gosforth Office
95 High Street | Gosforth
Newcastle upon Tyne | NE3 4AA
gosforth@sandersonyoung.co.uk
0191 213 0033