

75A GROSVENOR PARK ROAD, WALTHAMSTOW

£2,100 Per Month

3 Bed Flat



Features:

- Available Now
- Period Conversion
- Three Bedrooms
- Open Plan Kitchen/Reception
- Walthamstow Village Periphery
- Close Proximity to Walthamstow Central
- No Parking Available

An ideally located three bedroom apartment, situated on the ground floor of a stunning red brick period conversion located on a leafy residential road in Walthamstow Village.

While you're a short walk from bustling Hoe Street, connecting you to central Walthamstow and beyond, you're also moments from the centre of the serene Village. Walthamstow's much loved old town is filled with independent shops, pubs and eateries, and is wonderful to explore on foot or by bike.

REQUEST A VIEWING
 0203 397 9797

E11, E7, E12 & E15
 hello11@stowbrothers.com
 0203 397 2222

E4 & N17
 hello4@stowbrothers.com
 0203 369 6444

E17 & E10
 hello17@stowbrothers.com
 0203 397 9797

E18 & IG8
 hello18@stowbrothers.com
 0203 369 1818

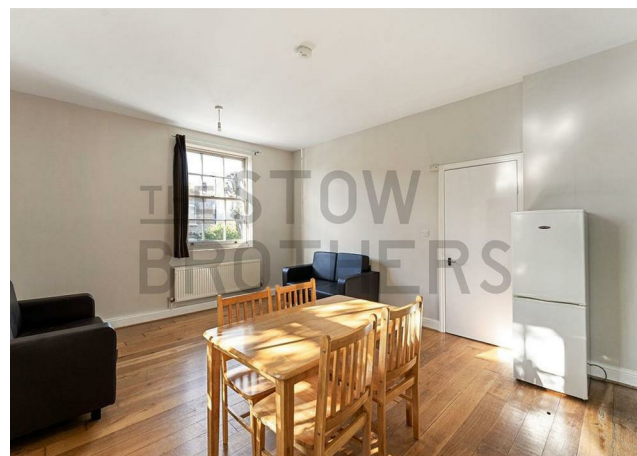
E8, E9, E5, N16, E3 & E2
 hellohackney@stowbrothers.com
 0208 520 3077

New Homes
 newhomes@stowbrothers.com
 0203 325 7227

Investment & Development
 id@stowbrothers.com
 0208 520 6220

Property Maintenance
 propertymanagement@stowbrothers.com
 0203 325 7228

STOWBROTHERS.COM
 @STOWBROTHERS



YOU LIVED HERE

You'll have one of our most enviable neighbourhoods right on your doorstep – the peaceful, part pedestrianised streets of Walthamstow Village are just a handful of strides away, and home to a wide range of artisanal shops, high quality gastropubs, chic bars and excellent restaurants plus a regular, thriving farmers market.

Walthamstow Central Station is just a third of a mile on foot, and will get you directly to Oxford Circus

and Liverpool Street in only twenty minutes. Bus, tube and overground links will get you pretty much anywhere else you want to go, and next door you'll find the Walthamstow Mall.



WHAT ELSE?

- With The Village on your doorstep you're spoilt for choice when it comes to a new local, but may we suggest you try The Castle? It's a lovely, family-friendly gastropub just 100 yards from your front door.
- Ten minutes takes you to the Ravenswood estate, where you'll find a cluster of local brewery taprooms as well as Mother's Ruin gin palace and the famous God's Own Junkyard neon gallery.
- Despite being in such a cosmopolitan hub, you're surrounded by excellent green space; Lloyd Park, which houses the William Morris Gallery, is 15 minutes north, the recently launched Fellowship Square, with its impressive fountains, is in the same area, while Hollow Ponds, at the cusp of Epping Forest, is around 15 minutes east.

REQUEST A VIEWING
0203 397 9797

FOLLOW US → @STOWBROTHERS
STOWBROTHERS.COM