

first for homes

first for property in life - firstforhomes.co.uk

Contact Allan England's Team

01592 752 944



Sandray Park, Glenrothes

Offers over £104,995

Sandray Park, Glenrothes

Beautifully Presented 2-Bedroom Terraced Villa In Sought After Area of Pitcoudie, North Of Glenrothes!

Allan England's award-winning team at first for homes are proud to welcome to the market this Lovely 2-Bedroom Villa situated within the highly desirable area of Pitcoudie, North Glenrothes. The property offers bright, spacious and move-in condition family living accommodation comprising on the ground floor: entrance hallway, family lounge with patio doors to rear garden, spacious kitchen/diner. The upper level offers 2 double bedrooms and family bathroom. New Boiler in 2023. Externally, there are garden grounds to the front & rear and street parking. Early viewing is highly recommended to ensure you don't miss out! Ideal First Time Buy.

HOME REPORT- £115,000

EPC RATING- C

COUNCIL TAX BAND- B

Call first for homes - first for trust... first for service... first for aftercare!

Glenrothes is regarded as one of the most successful Towns in Scotland with a wealth of local amenities including Kingdom Shopping Centre as well as sport and leisure at Michael Woods and a multi-screen cinema. Glenrothes boasts its very own 18-hole Golf course and both Primary and Secondary schooling are available. For the commuter the A92 allows swift access to Edinburgh and there are railway stations at both Thornton and Markinch.

INFORMATION

These particulars are prepared on the basis of information provided by our clients. We have not tested the electrical system or appliances, nor where applicable, any central heating system. All sizes are recorded by electronic tape measurements to give an indicative, approximate size only. Prospective purchasers should make their own enquiries - no warranty is given or implied. This schedule is not intended to, and does not form any contract.





SITUATION – Glenrothes

ENTRANCE HALLWAY

LOUNGE 13'6" x 10'7" approx (4.14m x 3.24m approx)

KITCHEN/DINER

19'8" x 10'11" approx (6m x 3.33m approx)

BEDROOM 1

16'6" x 9'8" approx (5.04m x 2.96m approx)

BEDROOM 2

FAMILY BATHROOM

GARDEN GROUNDS

INFORMATION



Information

These particulars are prepared on the basis of information provided by our clients. We have not tested the electrical system or any electrical appliances, nor where applicable, any central heating system. All sizes are recorded by electronic tape measurement to give an indicative, approximate size only. Prospective purchasers should make their own enquiries – no warranty is given or implied. This schedule is not intended to, and does not form any contract.

FREE Valuation

Selling Your Home?

Choose first for homes - a highly experienced estate agency team you can trust to sell your home at the highest possible price. Offering fantastic savings on selling fees, with no compromise on service, free professional photography highlighting your home in its best light, first for homes will be your first choice. Contact us today to arrange your appointment.



first for trust

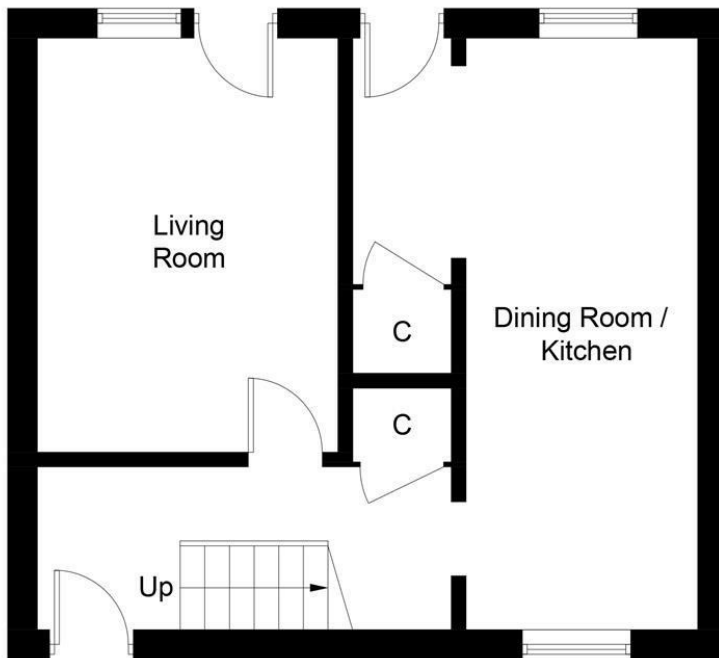


first for service

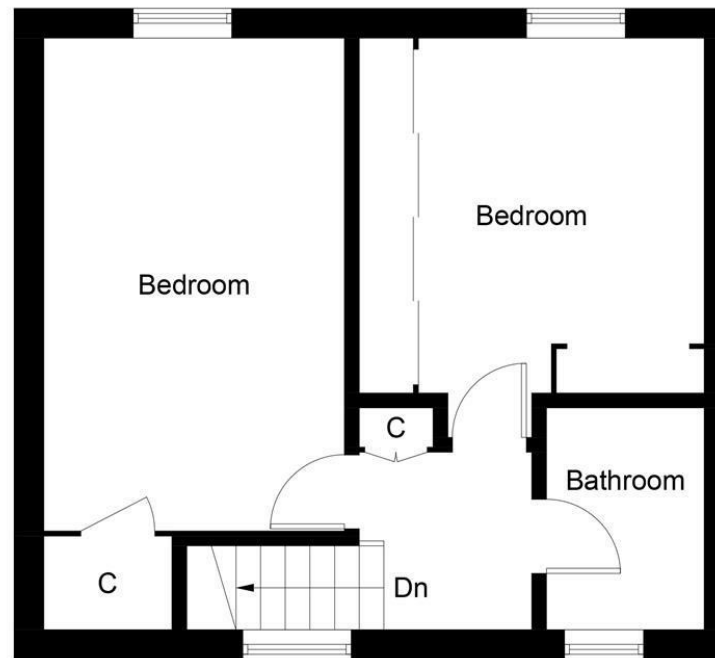


first for aftercare

32 North Street, Glenrothes, Fife KY7 5NA
Fax: 01592 807947
sales@firstforhomes.co.uk
www.firstforhomes.co.uk



Ground Floor



First Floor

Illustration for identification purposes only, measurements are approximate, not to scale. Fourlabs.co © (ID1260146)

first for homes
first for property in life - firstforhomes.co.uk

Contact Allan England's Team
01592 752 944