



Roger Street, WC1N
£900,000

Dexters



Roger Street, WC1N

Offers In Excess Of. A good size two double bedroom home with two bathrooms, a separate WC, open-plan living room kitchen and lots of natural light. The property is located within a small modern block in a residential part of Bloomsbury which provides excellent access to amenities, transport, the West End and London's best universities.

Langdale Place is located within a quiet pocket of Bloomsbury nearby Lamb's Conduit Street, Doughty Street and Mecklenburgh Square. Russell Square and Chancery Lane Stations are close by as well as a large array of amenities.

Features

- Two Double Bedrooms
- Excellent Location
- Two En-Suites
- Second Floor
- Underfloor Heating
- No Onward Chain



Roger Street, London, WC1N

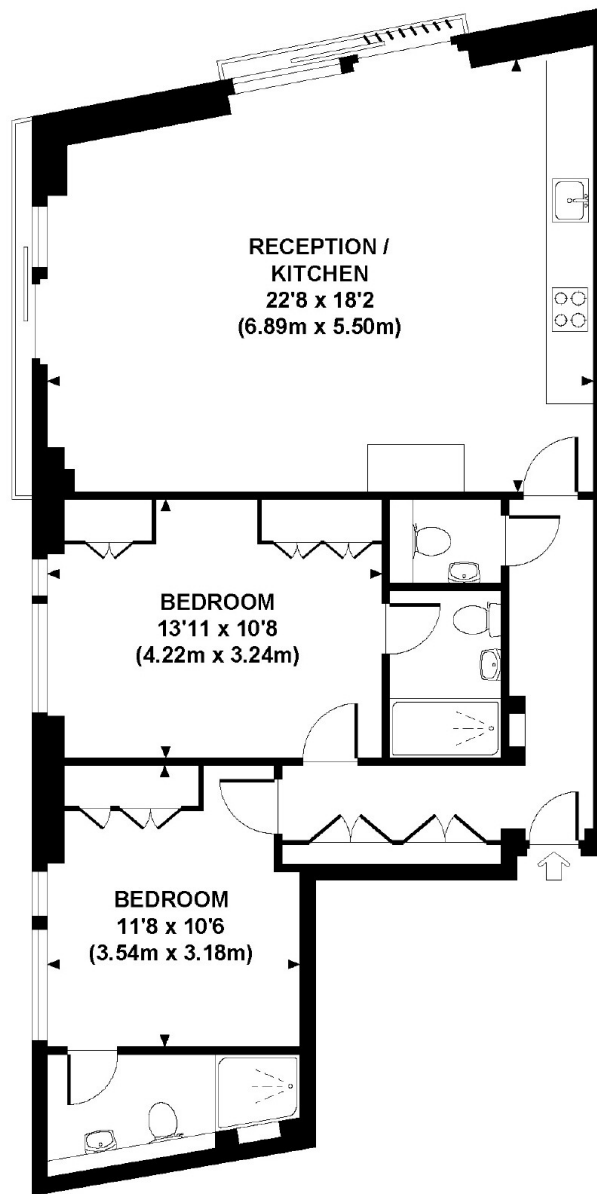
LANGDALE PLACE, ROGER STREET, WC1N

Approx. gross internal area

839 Sq Ft. / 77.9 Sq M.

Representation of current layout

Not to scale.



SECOND FLOOR

Dexters

Bloomsbury
55-56 Coram Street
London
WC1N 1HB

Sales
020 7833 4466

Energy Rating: C. We aim to make our particulars both accurate and reliable. However they are not guaranteed; nor do they form part of an offer or contract. If you require clarification on any points then please contact us, especially if you're traveling some distance to view. Please note that appliances and heating systems have not been tested and therefore no warranties can be given as to their good working order.

 **RICS** | Regulated
Estate Agent
and Letting Agent

[dexters.co.uk](https://www.dexters.co.uk)