



London Road, TW7

£299,950

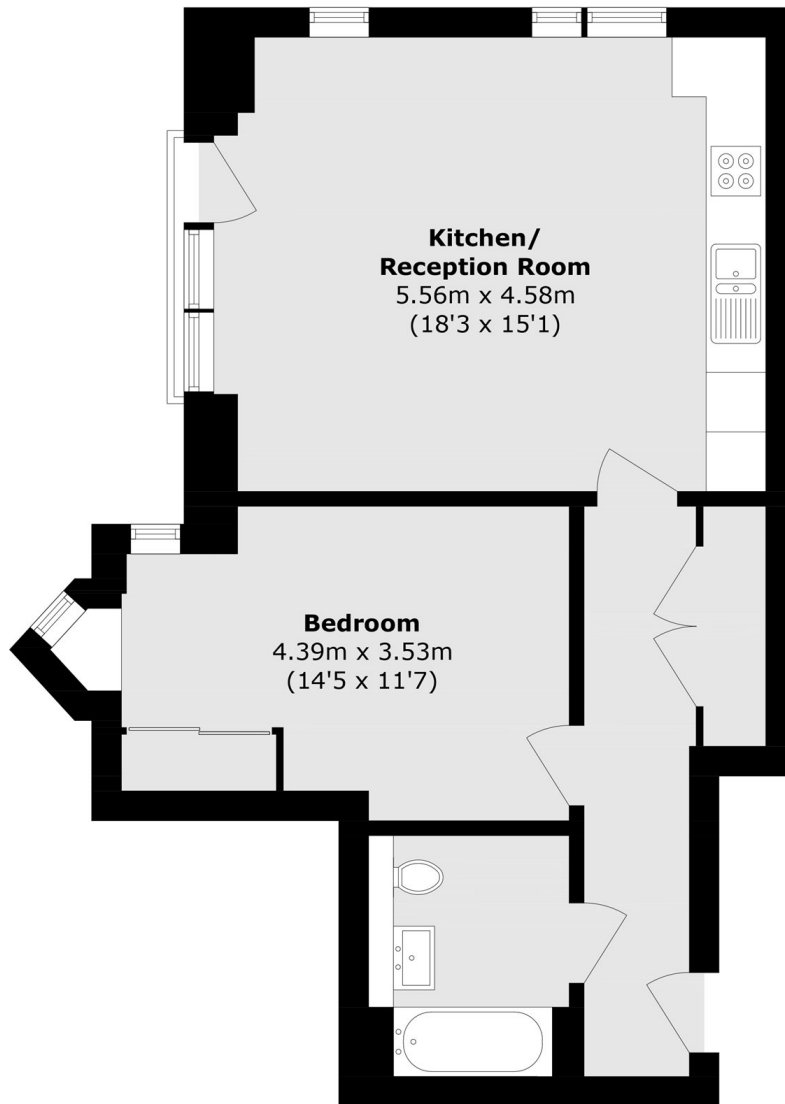
A spacious and well equipped apartment in perfect condition. Being in a corner position, the property benefits from lots of natural light from dual aspect windows, and benefits include a Juliet balcony, long lease, fully integrated kitchen and allocated parking is included.

The development is located within a close distance to both Isleworth Mainline Station and Osterley tube station (Piccadilly line) and local school and amenities.

Features

- Modern Development
- Allocated Parking Included
- Close to Train Station
- Fabulous Condition
- Close to Amenities
- Juliet Balcony

London Road, Isleworth, TW7



Total area (approx.): 53.6 sq. m (577.4 sq. ft)