



Oxgate Gardens, NW2

£950,000

Dexters



Oxgate Gardens, NW2

This three bedroom, two bathroom detached family home is situated moments from Gladstone Park. The house is arranged over two floors and offers excellent living space throughout. With off-street parking, a double garage, a private rear garden, and potential to extend (STPP).

The ground floor has two spacious reception rooms perfect for entertaining and a separate eat-in family kitchen with integrated appliances. There is also a separate conservatory with access to the private garden and a downstairs WC.

The first floor has three double bedrooms with built-in storage, one with an en suite, and a family bathroom with a bath and separate shower. The property also offers off-street parking, a double garage, and is ideally located moments away from Gladstone Park.

The property comes with no onward chain and potential to extend, subject to the usual permissions.

Oxgate Gardens is ideally situated with a wide variety of amenities in Dollis Hill, Willesden, Cricklewood, and Brent Cross. The A5, A406, and M1 are also nearby, allowing easy access in and out of London.

Features

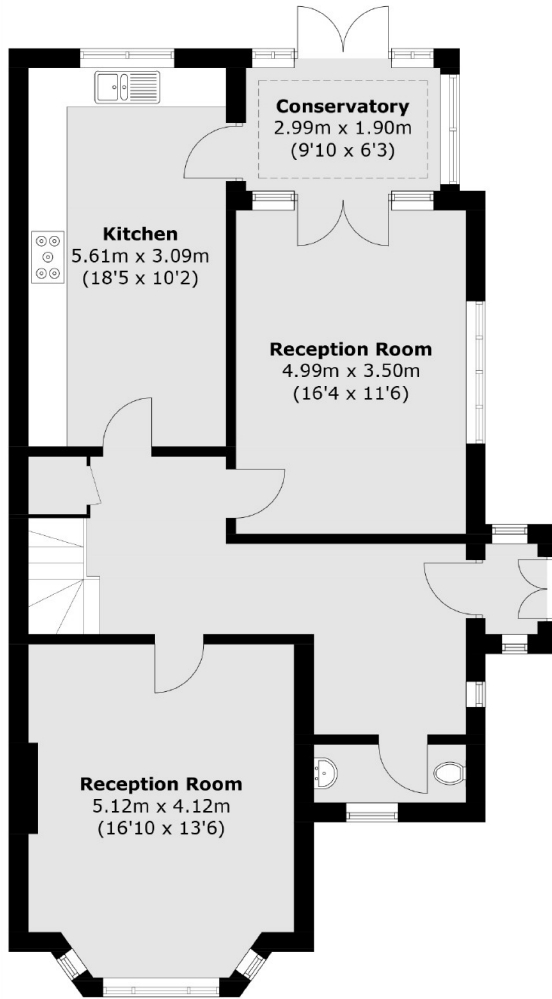
- Detached House
- Three Double Bedrooms
- Off-Street Parking
- Double Garage
- Eat-In Kitchen
- Potential To Extend



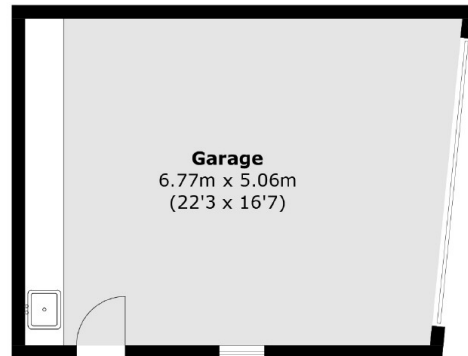




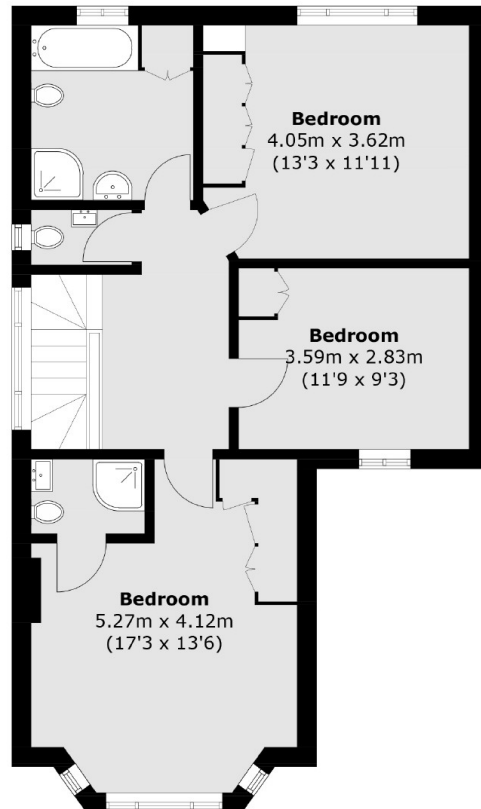
Oxgate Gardens, London, NW2



Ground Floor



(Not Shown In Actual Location / Orientation)



First Floor

Total area (approx.): 152.6 sq. m (1,642.6 sq. ft)
Garage : 32.8 sq. m (353.0 sq. ft)