



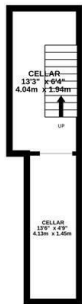
Lower Park Road, Hastings TN34 2LB

Offers in excess of £750,000

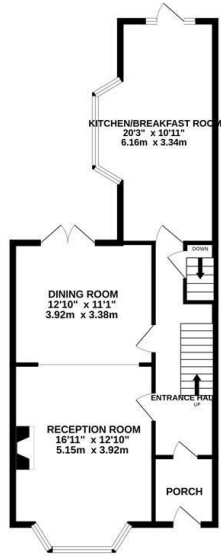


*** SOLD PRIOR TO MARKETING*** A simply stunning five bedroom, two reception room VICTORIAN TERRACED HOUSE occupying an unrivalled location adjacent to Alexandra Park. It's enviably positioned within easy walking distance of Hastings Town centre which offers a range of shopping and leisure facilities, the beach and a mainline railway station with connections to London stations. Spanning THREE SPACIOUS STOREYS the accommodation here enjoys a WEALTH OF ORIGINAL FEATURES including exposed floorboards, high ceilings and feature fireplaces throughout, the ground floor is arranged as a BAY FRONTED LIVING ROOM which is open to the dining room with double doors leading out to the garden at the rear, creating a bright, dual aspect space which is ideally suited to family life. The FITTED KITCHEN/BREAKFAST ROOM is positioned at the rear of the property offering ample storage and worktop space along with space for a breakfast table and access to the garden. The first floor houses two double bedrooms with the principal bedroom measuring an impressive 18'6 x 16'11, together with a stylish shower room and separate

BASEMENT
585 sq.ft. (54.0 sq.m.) approx.



GROUND FLOOR
679 sq.ft. (62.9 sq.m.) approx.



1ST FLOOR
585 sq.ft. (54.0 sq.m.) approx.



2ND FLOOR
585 sq.ft. (54.0 sq.m.) approx.



TOTAL FLOOR AREA : 2017 sq.ft. (187.4 sq.m.) approx.

Whilst every attempt has been made to ensure the accuracy of the floorplan contained here, measurements of doors, windows, rooms and any other items are approximate and no responsibility is taken for any error, omission or mis-statement. This plan is for illustrative purposes only and should be used as such by any prospective purchaser. The services, systems and appliances shown have not been tested and no guarantee as to their operability or efficiency can be given.
Made with Metropix ©2025

