



Churchside Cottages Fishpool Road
Blidworth Mansfield



Churchside Cottages Fishpool Road Blidworth Mansfield NG21 0QP

for sale
£185,000



Property Description

Fishpool Road, Blidworth – Historic Charm Meets Modern Comfort!

This charming property on Fishpool Road, Blidworth, is believed to be around 300 years old and offers a rare chance to own a piece of history. Full of character, it has recently been upgraded with a brand-new kitchen, updated electrics, fresh plastering, and a new boiler, and is offered with no onward chain.

Inside, the entrance hall features tiled flooring and UPVC double-glazed windows. Two reception rooms showcase exposed beams and brick hearths, with one ready for a log burner and stairs leading to the first floor. The newly fitted kitchen boasts matching units, tiled splashbacks, a composite sink, and integrated appliances, with French doors opening to the rear garden.

Upstairs, the landing provides loft access and an airing cupboard. The master bedroom is a spacious double with French doors to a rear-facing balcony. The bathroom includes a bath, WC, bidet, pedestal basin, towel radiator, and rear-facing window.

Externally, the property enjoys open field views to the front and is set in a rural village with pubs, restaurants, and amenities nearby. A side driveway offers parking for two vehicles, and the secure rear garden provides scope for improvement.

Entrance Hall

The entrance hall features UPVC double-glazed windows to the front and side elevations, a side access door, and is finished with tiled flooring.

Reception Room One

The reception room retains its original charm, featuring exposed wooden ceiling beams and a brick hearth prepared for a log burner, complemented by a front-facing window.

Reception Room Two

The second reception room exudes character and warmth, showcasing original wooden ceiling beams and a brick hearth ready for a log burner. It also features a front-facing window and stairs leading to the first floor.

Kitchen / Diner

The recently upgraded kitchen/diner features a brand-new fitted design with matching wall and base units, tiled splashbacks, and a composite sink with drainer. It includes an electric oven and hob with cooker hood, integrated appliances such as a washing machine, fridge freezer, and dishwasher, plus a new boiler and space for dining. The space is enhanced by double-glazed windows to the rear and side, French doors opening to the rear, freshly plastered walls, and a tiled floor.

First Floor Landing

The first-floor landing provides access to the loft and includes an airing cupboard housing the immersion tank.

Bedroom One

Bedroom three featuring a wall-mounted radiator and double-glazed window to front elevation.

Bedroom Two

The second bedroom has double glazed window to front elevation.

Bedroom Three

The master bedroom is a spacious double, featuring a wall-mounted radiator and French doors that open onto a rear-facing balcony.

Bathroom

The bathroom features a partially tiled splashback, rear-facing double-glazed window, pedestal wash basin, towel radiator, bath with mixer tap, WC, and bidet.

Externals

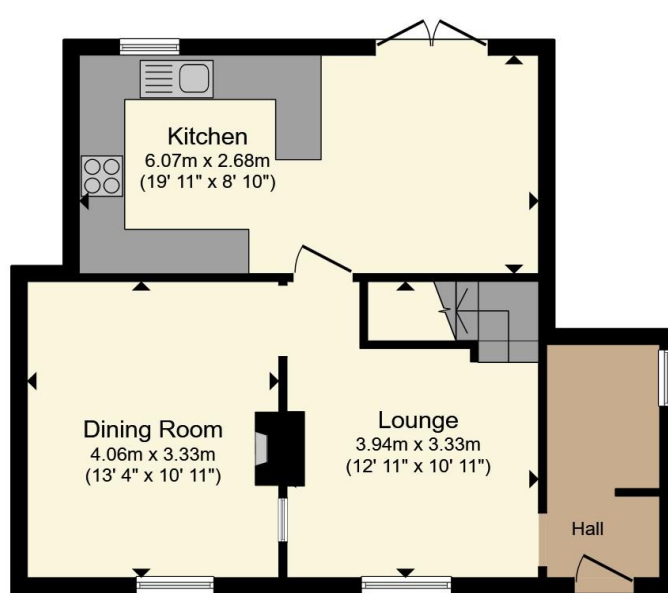
Set in a delightful rural village with open fields to the front, this property combines peaceful surroundings with convenient access to nearby pubs, restaurants, and amenities.

A side driveway provides parking for up to two vehicles, and the secure rear garden offers potential for transformation.

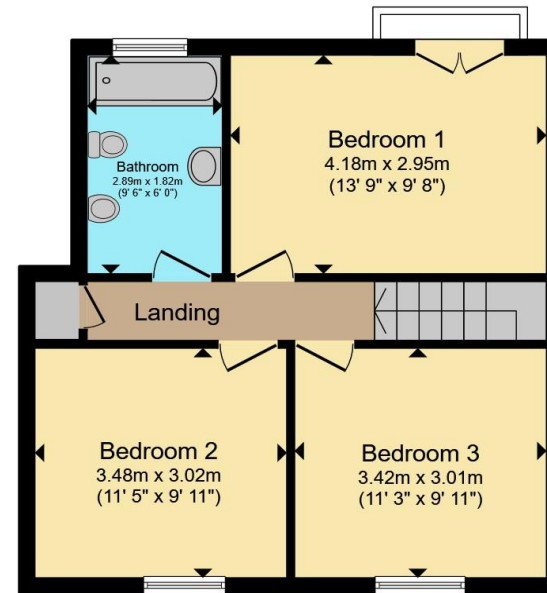








Ground Floor



First Floor

Total floor area 96.1 m² (1,035 sq.ft.) approx

This floor plan is for illustrative purposes only. It is not drawn to scale. Any measurements, floor areas (including any total floor area), openings and orientation are approximate. No details are guaranteed, they cannot be relied upon for any purpose and they do not form part of any agreement. No liability is taken for any error, omission or misstatement. A party must rely upon its own inspection(s). Powered by www.propertybox.io



To view this property please contact Burchell Edwards on

T 01623 627727
E Mansfield@burchelledwards.co.uk

12 Albert Street
 MANSFIELD NG18 1EB

EPC Rating: D Council Tax
 Band: B

Tenure: Freehold

check out more properties at burchelledwards.co.uk



1. MONEY LAUNDERING REGULATIONS Intending purchasers will be asked to produce identification documentation at a later stage and we would ask for your co-operation in order that there will be no delay in agreeing the sale. 2. These particulars do not constitute part or all of an offer or contract. 3. The measurements indicated are supplied for guidance only and as such must be considered incorrect. Potential buyers are advised to recheck measurements before committing to any expense. 4. We have not tested any apparatus, equipment, fixtures, fittings or services and it is in the buyers interest to check the working condition of any appliances.

Burchell Edwards is a trading name of Connells Residential which is registered in England and Wales under company number 1489613, Registered Office is Cumbria House, 16-20 Hockliffe Street, Leighton Buzzard, Bedfordshire, LU7 1GN. VAT Registration Number is 500 2481 05.

See all our properties at www.burchelledwards.co.uk | www.rightmove.co.uk | www.zoopla.co.uk

Property Ref: MFD209502 - 0001