



**Price**  
**£475,000**

**Freehold**

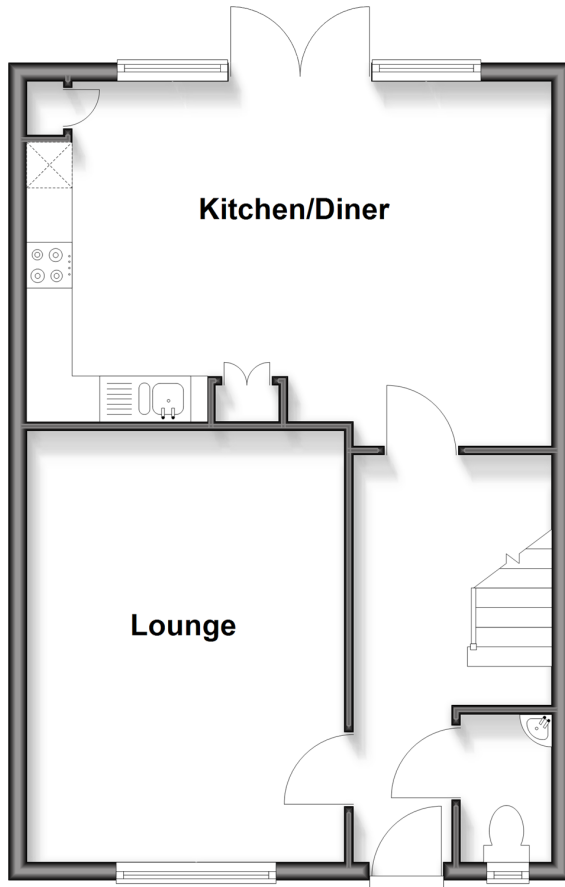
3x  2x  2x 

**Fennel Drive,  
Chichester, West  
Sussex, PO20**

**cubitt&west**  
Helping you move forwards

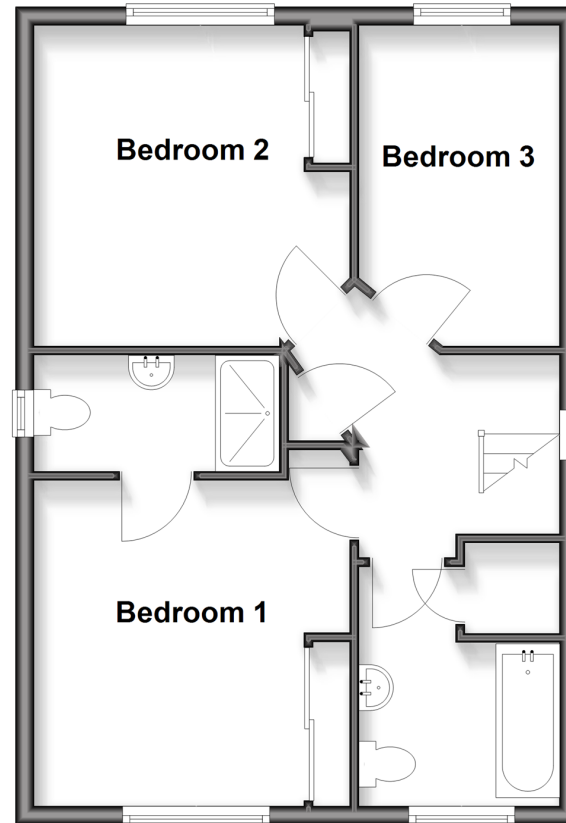
## Ground Floor

Approx. 49.2 sq. metres (529.3 sq. feet)



## First Floor

Approx. 49.2 sq. metres (529.3 sq. feet)



## Accommodation

### GROUND FLOOR

Hall

Cloakroom

Lounge: 15'5 x 11'7 (4.70m x 3.53m)

Kitchen/Diner: 18'11 x 12'3 (5.77m x 3.74m)

### FIRST FLOOR

Landing

Bedroom 1: 11'11 x 11'8 (3.63m x 3.56m)

En-Suite Shower Room

Bedroom 2: 11'5 x 11'5 (3.48m x 3.48m)

Bedroom 3: 11'9 x 7'2 (3.58m x 2.19m)

Bathroom

### OUTSIDE

Front Garden

Rear Garden

Off Road Parking

Detached Garage

Garden/Office Room





## Main features

- Bedroom 1 with en-suite and built-in wardrobes
- Detached garage with power, lighting and the recent installation of a level screed floor compound
- Private driveway for multiple vehicles and EV charging point
- Stunning open-plan kitchen/diner with ample cupboard space, island (with power) and French doors to garden



### Nearest Schools

Primary Schools: Portfield Community Primary 0.6 miles, Kingsham Primary 1.0 miles, St Richard's Catholic Primary 1.1 miles

Secondary Schools: Arabesque School of Performing Arts



### Transport Information

Train Stations: Chichester 1.3 miles, Fishbourne 2.8 miles, Bosham 4.3 miles



### Address

Fennel Drive, Chichester, West Sussex, PO20



### Directions

For directions to this property please contact us.





**cubitt&west**  
Helping you move forwards

Call Chichester Branch 01243 786581 ■ [cubittandwest.co.uk](https://cubittandwest.co.uk)



■ Legal advice should be taken to verify fixtures/fittings, planning, alterations and/or lease details ■ Appliances & services are untested, dimensions are approximate and floor plans are not to scale



40415663/20260106/CT/SP