



**29 Wood Street, Greenfields, Shrewsbury, SY1 2PN**

2 bedroom semi-detached house — £230,000 Freehold

# 29 Wood Street, Greenfields, Shrewsbury, SY1 2PN

Coopergreenpooks.co.uk

£230,000 Freehold — 2 bedroom semi-detached house

sales@cgpooks.co.uk

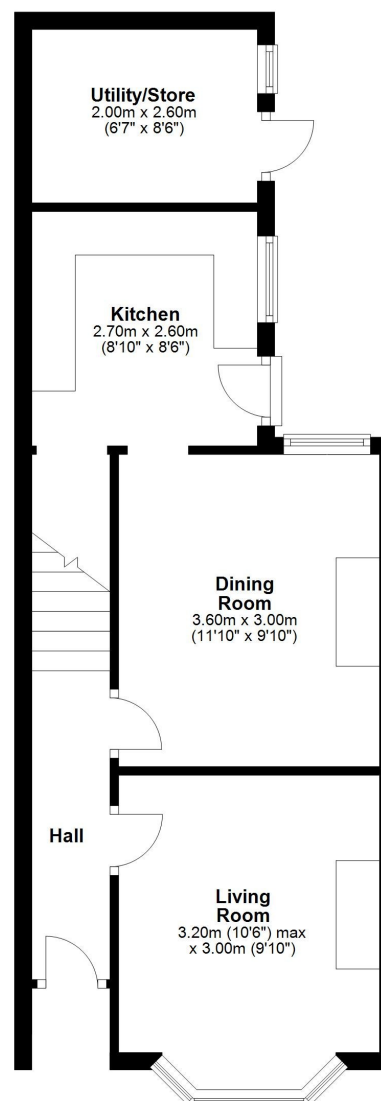
Situated within a popular residential area, just a short walk from the town centre, this traditional semi-detached house of character offers very neatly presented and well-proportioned accommodation with plenty of potential for modernisation, while benefitting from a private south facing garden.

## KEY FEATURES

- Entrance hall with staircase to a spacious landing
- Living room with feature fireplace and bay window to front
- Separate reception room, currently dressed as a sitting room, also having a feature fireplace
- Fitted kitchen with a range of units, space for appliances, useful under stairs pantry, and part-glazed door to the garden
- Adjoining the kitchen is a very practical utility/store which is accessed externally and could be incorporated into a kitchen extension if required
- On the first floor are two generous bedrooms and a large family shower room
- uPVC double glazed windows and gas fired central heating
- Private south facing garden, laid to lawn with a paved terrace, planted border, timber garden store, and gated access to side
- To the front of the property there is potential to drop the curb and provide off street parking
- A great location on a quiet no through street in the popular Greenfields area, just a short walk from a range of amenities, excellent primary school, the railway station and town centre
- Sold with no upward chain

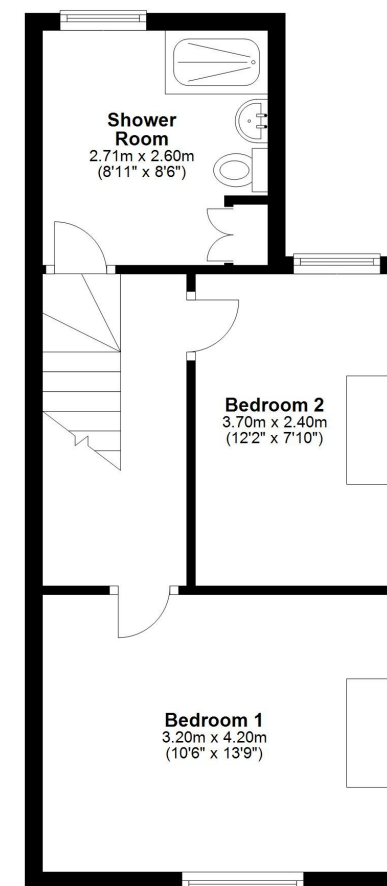
## Ground Floor

Approx. 40.6 sq. metres (436.6 sq. feet)



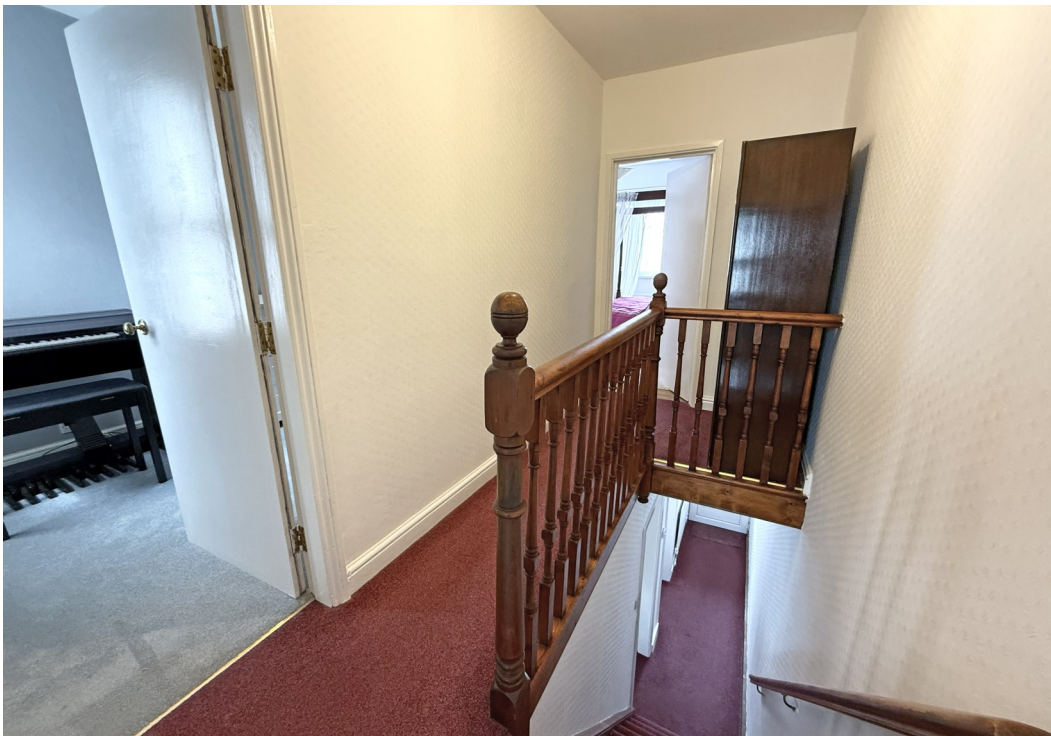
## First Floor

Approx. 35.1 sq. metres (377.8 sq. feet)



Total area: approx. 75.7 sq. metres (814.5 sq. feet)









Cooper Green Pooks  
3 Barker Street  
Shrewsbury  
SY1 1QF

[www.cgpooks.co.uk](http://www.cgpooks.co.uk)  
[sales@cgpooks.co.uk](mailto:sales@cgpooks.co.uk)  
01743 276666



# 29 Wood Street, Greenfields, Shrewsbury, SY1 2PN

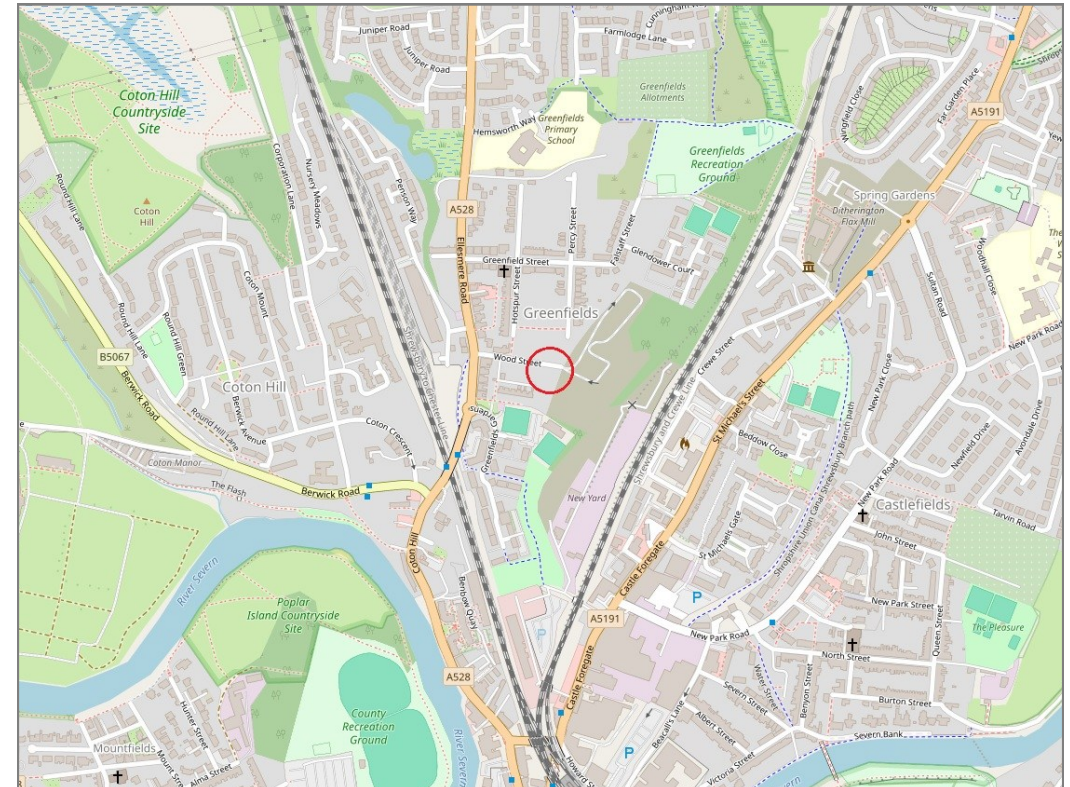
£230,000 Freehold — 2 bedroom semi-detached house

sales@cgpooks.co.uk

rightmove 

 OnTheMarket.com

 **RICS**  
Regulated by RICS



**BOUNDARIES NOT CONFIRMED**

Tenure	<b>Freehold</b>
Local Authority	<b>Shropshire Council</b>
Council Tax	<b>Band B</b>
EPC Band	<b>TBC</b>
Services	<b>All mains services are connected</b>

 **Expert mortgage advice available**

3 Barker St, Shrewsbury SY1 1QF

**Cooper Green Pooks**  
**01743 276666**



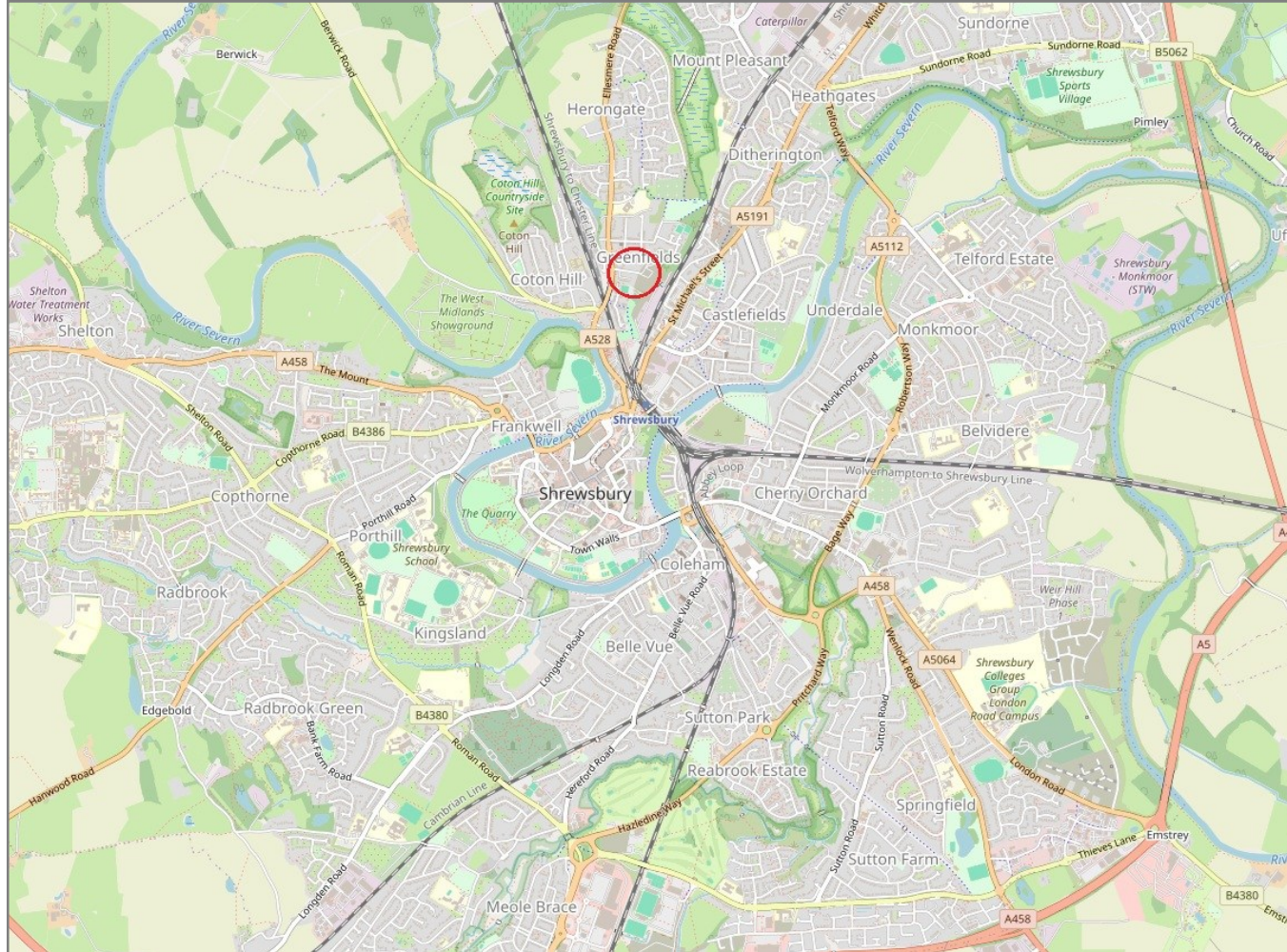
Your home may be repossessed if you do not keep up repayments on your mortgage.  
There may be a fee for mortgage advice. The actual amount you pay will depend upon your circumstances. The fee is up to 1% but a typical fee is 0.3% of the amount borrowed.

# 29 Wood Street, Greenfields, Shrewsbury, SY1 2PN

Coopergreenpooks.co.uk

£230,000 Freehold — 2 bedroom semi-detached house

sales@cgpooks.co.uk



**IMPORTANT NOTICE:** Cooper Green Pooks for themselves and for the lessors or vendors of this property whose agents they are give notice that: 1 No appliances, services or service installations have been tested and no warranty as to suitability or serviceability is implied. Any prospective purchaser or lessee is advised to obtain verification from their surveyor or solicitor. 2. The particulars are set out as a general outline only for the guidance of the intended purchasers or lessees and do not constitute, nor constitute part of, an offer or contract. 3. All descriptions, reference to condition and necessary permissions for use and occupation and other details are given in good faith and are believed to be correct but any intending purchasers or lessees should not rely on them as statements or representation of fact but satisfy themselves by inspection or otherwise as to the correctness of each of them. 4. No person in the employment of Cooper Green Pooks has any authority to make or give any representation or warranty whatsoever in relation to this property. 5. All rentals and prices are quoted exclusive of Stamp Duty, legal and surveyors fees and any other associated purchasers or lessees costs. 6. Floor plans are indicative only and should not be relied on. 7. The plan showing the boundary of the property is indicative only and has not been checked against the legal title so should not be relied on. 8. All dimensions, floor areas and site areas are only approximate and should not be relied on. Dimensions are generally maximum room dimension.