



Palgrave Gardens, NW1

£5,200 Per calendar month

Dexters



Palgrave Gardens, NW1

A penthouse apartment with two private terraces situated in a modern gated development on Palgrave Gardens. The ninth floor aspect provides views over Regent's Park, towards Hampstead Heath and the City.

There is a large reception room which has plenty of space for both living and dining areas leading onto a private balcony. The modern kitchen/diner has integrated appliances and adequate space to dine. The room has doors leading out to the larger terrace with views to the west and the City skyline.

The principle bedroom has built-in storage, en suite shower room and access to the larger terrace. There is a second double bedroom with built-in storage, balcony, and access to the second bathroom which is off the hallway.

Palgrave Gardens is a short walk from the open spaces of Regent's Park and the vibrant shops, bars, cafes and restaurants of Marylebone High Street. The development benefits from a gym, swimming pool and 24 hour concierge.

Baker Street underground station (Hammersmith & City, Bakerloo, Jubilee, Circle and Metropolitan, Zone 1) offers many transport links to all corners of London including Canary Wharf and Marylebone Station also offers National Rail services out of London.

Features

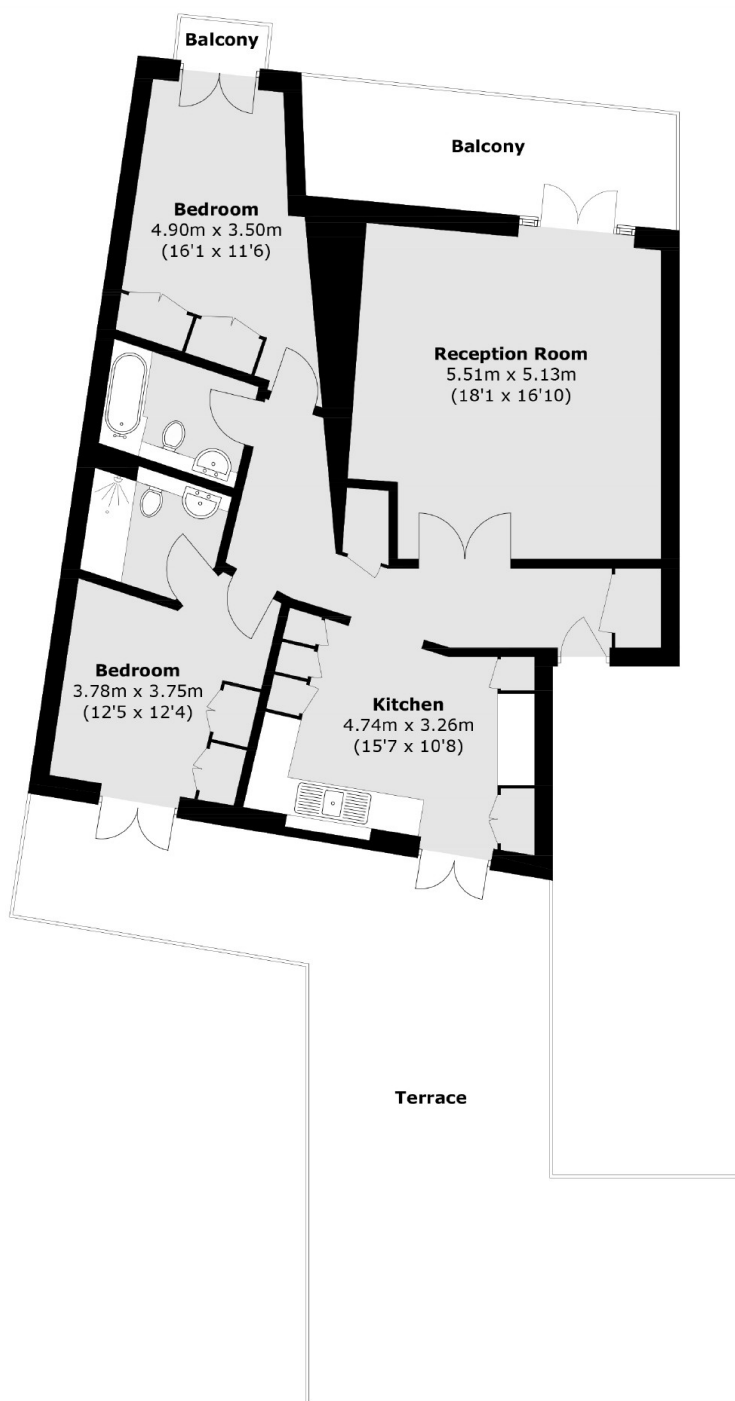
- Ninth Floor Apartment
- Dual Aspect Views
- Two Bedrooms
- Two Bathrooms
- Lift & Concierge
- Gym & Swimming Pool







Palgrave Gardens, London, NW1



Total area (approx.): 90.9 sq. m (978.4 sq. ft)
Balcony / Terrace area (approx.): 68.7 sq. m (739.4 sq. ft)