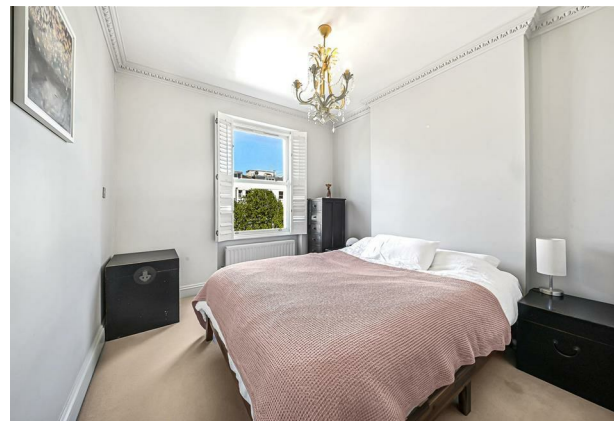




Belsize Grove NW3

Parkheath
Sold on Service





Belsize Grove, NW3 Asking Price £700,000 Share of Freehold

- Beautifully presented 2 bedroom apartment
- Set in stylish, grand white stucco fronted building
- Lift
- Expansive lawned communal gardens
- Bright and spacious 21ft open plan reception
- Contemporary kitchen with breakfast bar
- 12ft principal bedroom, plus 9ft 2nd bedroom/Study
- 635 sq ft approx on 3rd floor
- Share of freehold
- Envidable central Belsize Park location, moments to underground, shops and cafés

Belsize Park/Hampstead
208 Haverstock Hill
NW3 2AG
Sales 020 7431 1234
Lettings 020 7431 3104
nw3@parkheath.com

South/West Hampstead
192 West End Lane
NW6 1SG
Sales & Lettings
Tel 020 7794 7111
192@parkheath.com

Kensal Rise
54-56 Chamberlayne Rd
NW10 3JH
Tel 020 8960 4845
kensal@parkheath.com

Property Management
192 West End Lane
NW6 1SG
020 7433 6174
pm@parkheath.com

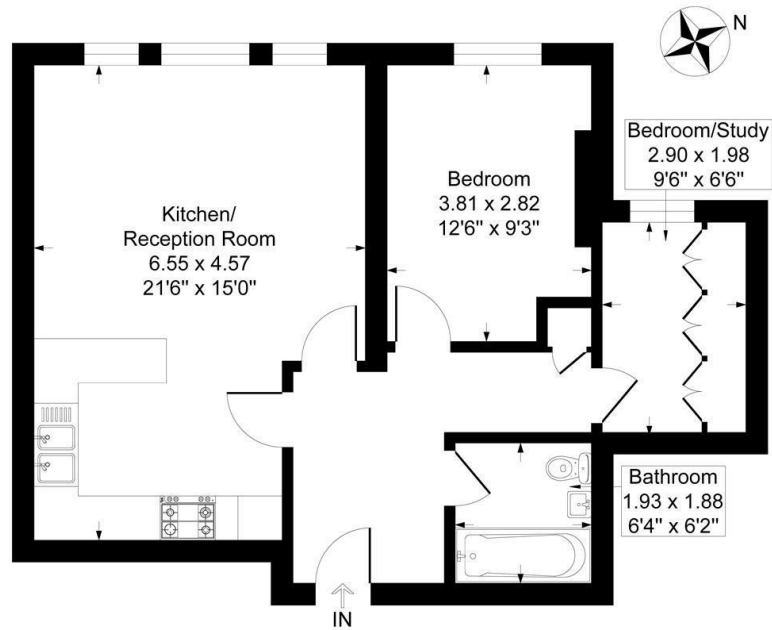
Parkheath
Sold on Service

Camden Tax band F

www.parkheath.com

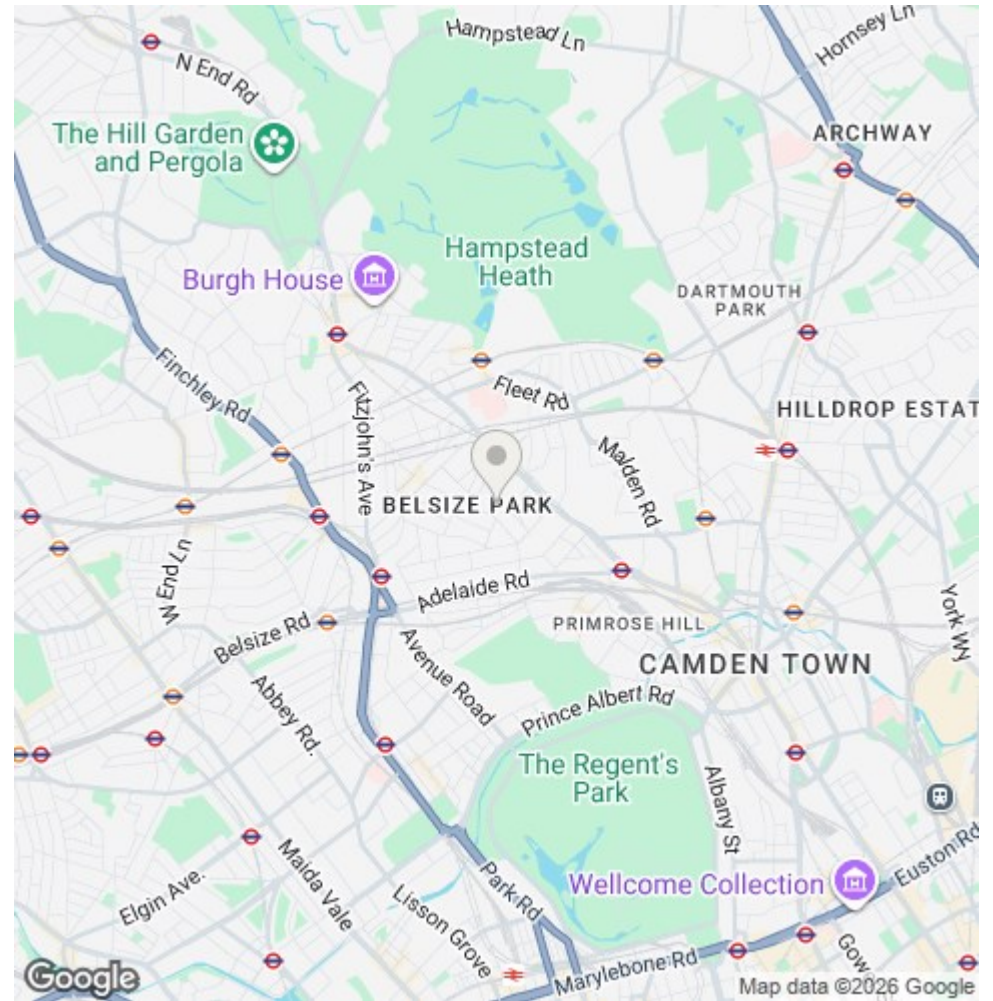
Ormonde Court Belsize Grove. NW3

Approximate Gross Internal Floor Area = 59.0 sq m / 635 sq ft



Third Floor

Illustration for identification purposes only, measurements are approximate, not to scale.



The particulars do not constitute part of an offer or contract. The particulars, including text, photographs and plans, are for the guidance only of prospective purchasers/tenants and must not be relied upon as statements of fact. The descriptions provided therein represent the opinion of the author and whilst given in good faith should not be construed as statements of fact. Nothing in these particulars shall be deemed a statement that the property is in good condition or otherwise or that any services or facilities are in good working order. All measurements are approximate