



4.01, Green Street,  
, W1K

£4,100 Per Week,

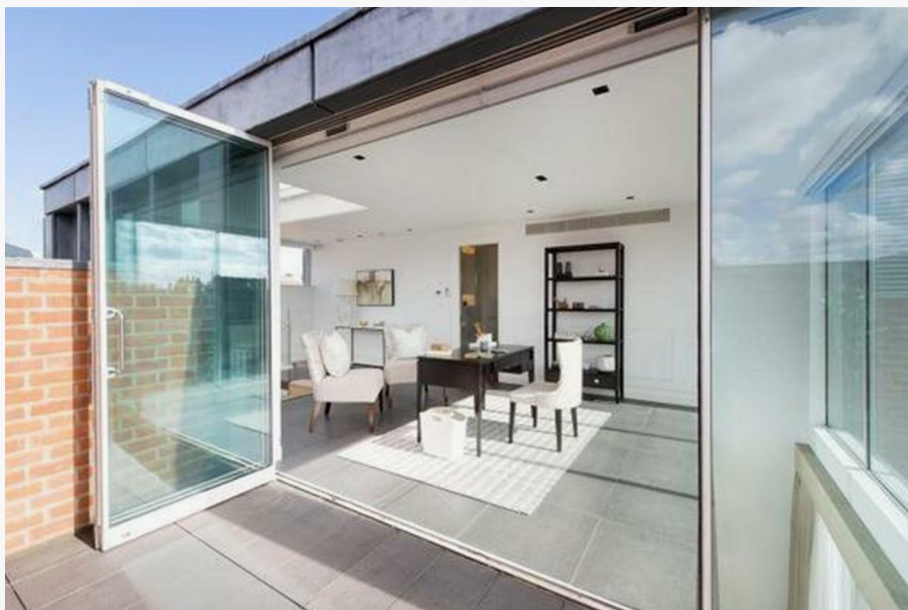
NAPIER WATT

T: 0207 935 0011  
E: [enquiries@napierwatt.co.uk](mailto:enquiries@napierwatt.co.uk)  
W: [napierwatt.co.uk](http://napierwatt.co.uk)

35 Berkeley Square, Mayfair, London, W1J 5BF







## Description

A three bedroom split level apartment of approximately 1,681 square feet. Situated over the third, fourth and fifth floors of this attractive refurbished period building ideally located within walking distances of Hyde Park, shopping facilities and transport links, the apartment features the latest in technology and bespoke interior design. Mayfair is London's most fashionable destination. With London's finest buildings, largest concentration of luxury hotels, best restaurants, bars, shopping, open spaces and hidden treasures all nestled together in a beautiful village setting. Nearest Tube: Bond Street/Marble Arch.

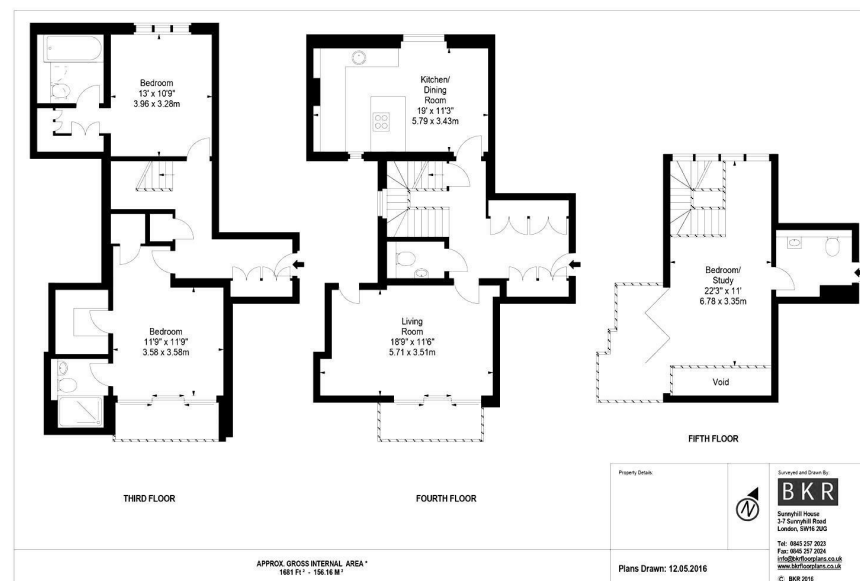
2 Bedrooms : Bedroom 3/Study : En Suite Bathroom : En Suite Shower Room : En Suite WC : Guest WC : Reception Room : Kitchen/Dining Room : 2 Balconies : Roof Terrace : Communal Garden

## Key Features

- 24 HOUR PORTER
- AC
- HIGH END
- MAYFAIR
- Furnished

## Terms

Fees & Charges: Tenancies exceeding £100,000 Per annum £480 inc VAT, Tenancies where a company is a tenant £480 Inc VAT.



IMPORTANT: We would inform prospective purchasers that these sales particulars have been prepared as a general guide only. A detailed survey has not been carried out, nor the services, appliances and fittings tested. Room sizes should not be relied upon for furnishing purposes and are approximate. If floor plans are included, they are for guidance only and illustration purposes only and may not be to scale. If there are any important matters likely to affect your decision to buy, please contact us before viewing the property.