



North End Road, W14

£425,000

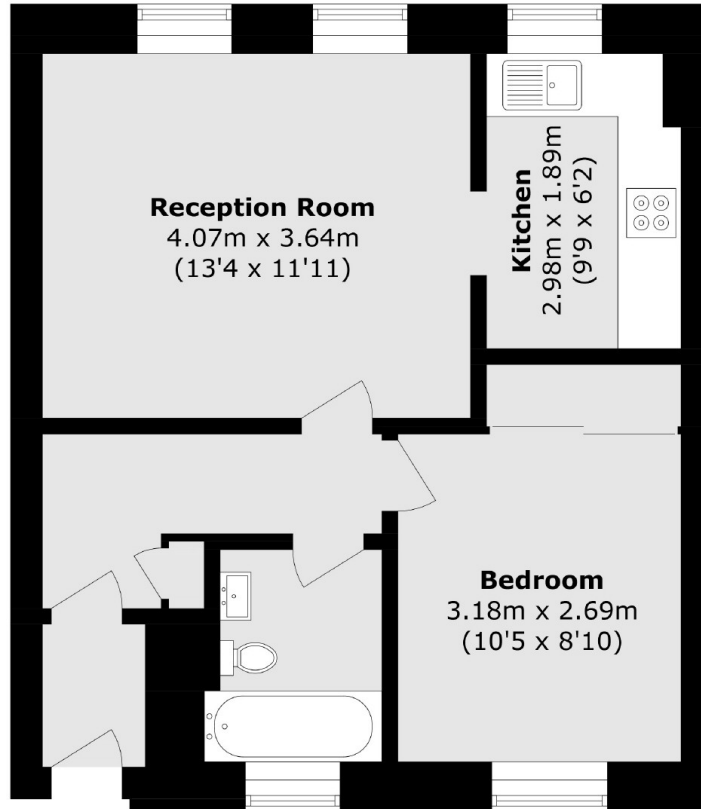
A modern one bedroom apartment situated in a popular gated purpose built development. The property offers excellent natural light, great space and storage and is located moments from Kensington High Street.

Penn Court is located at the top end of North End Road, towards Olympia, on the edge of Kensington High Street.

Features

- Long Leasehold
- One Bedroom
- Purpose Built
- Gated Development
- No Chain
- Close To Shops & Tubes

North End Road, London, W14



Total area (approx.): 42.8 sq. m (460.6 sq. ft)