



29 Hob Close Monkton Heathfield, Taunton TA2 8GL

£279,950







A well presented 3 bedrooomed semi-detached house situated in this popular area within 3.5 miles of the town centre with enclosed South-East facing garden to rear, garage and driveway parking.

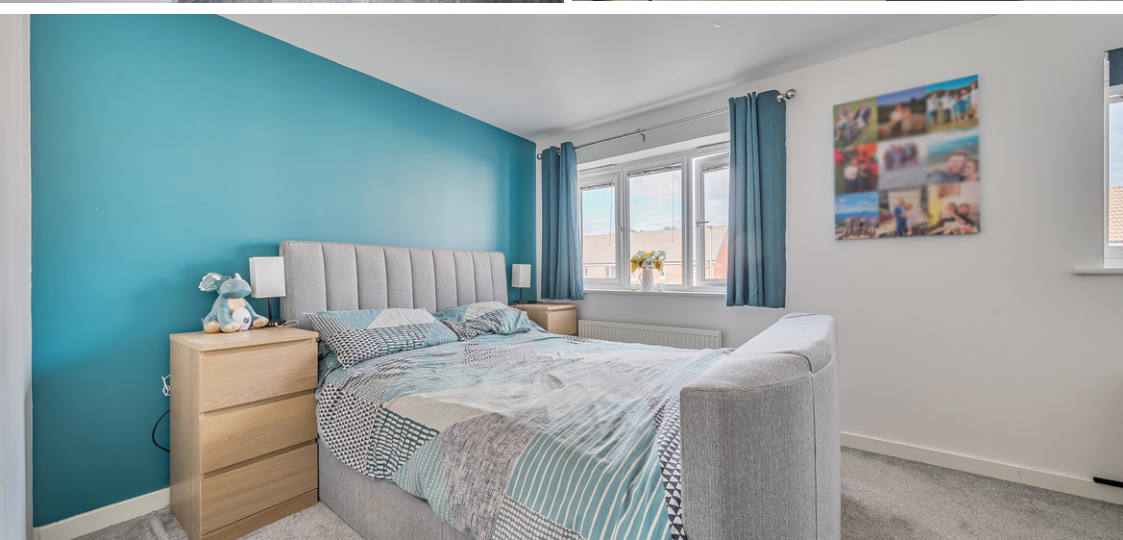






## Features

- Entrance Hall with door to integral garage
- Living Room
- Fitted Kitchen / Dining Room with French doors to garden
- Cloakroom
- Master Bedroom with Ensuite Shower Room
- 2 further Bedrooms
- Family Bathroom
- Enclosed South-East facing garden to rear with useful Shed
- Garage and driveway parking
- Gas central heating
- Double glazing
- Management charge approx. £211.82 pa
- Council tax band C
- What3words:  
///iceberg.wide.midfield





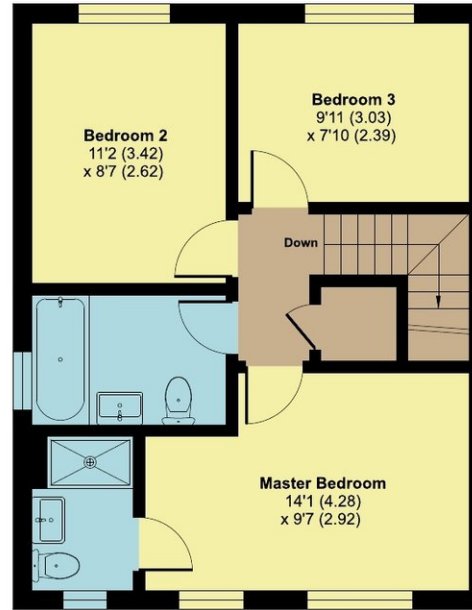
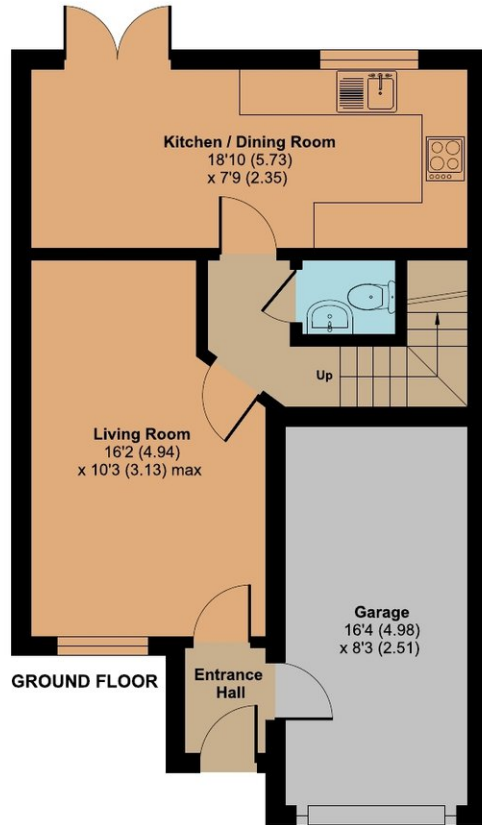
# 29 Hob Close, Monkton Heathfield, Taunton, TA2 8GL

Approximate Area = 849 sq ft / 78.8 sq m

Garage = 129 sq ft / 11.9 sq m

Total = 978 sq ft / 90.7 sq m

For identification only - Not to scale



Floor plan produced in accordance with RICS Property Measurement 2nd Edition, Incorporating International Property Measurement Standards (IPMS2 Residential). ©nichecom 2025. Produced for Robert Cooney. REF: 1359152



Viewing strictly through the selling agents:

**Robert Cooney**

Corporation Street, Taunton,  
Somerset TA1 4AW

Telephone 01823 230 230

taunton@robertcooney.co.uk

www.robertcooney.co.uk



**For clarification, we wish to inform prospective purchasers that:** these particulars are set out as a general outline only for the guidance of intended purchasers, and do not constitute, nor constitute part of, an offer or contract; all descriptions, dimensions, references to condition and necessary permission for use and occupation, and other details, are given without responsibility and any intending purchasers should not rely on them as statements or representation of fact, but must satisfy themselves by inspection or otherwise as to the correctness of each of them; no person in the employment of Robert Cooney has any authority to make or give any representation or warranty whatever in relation to this property; we have not carried out a detailed survey nor tested the services, appliances and specific fittings.

**robert  
cooney**