



Rowland Road, N17

£400,000

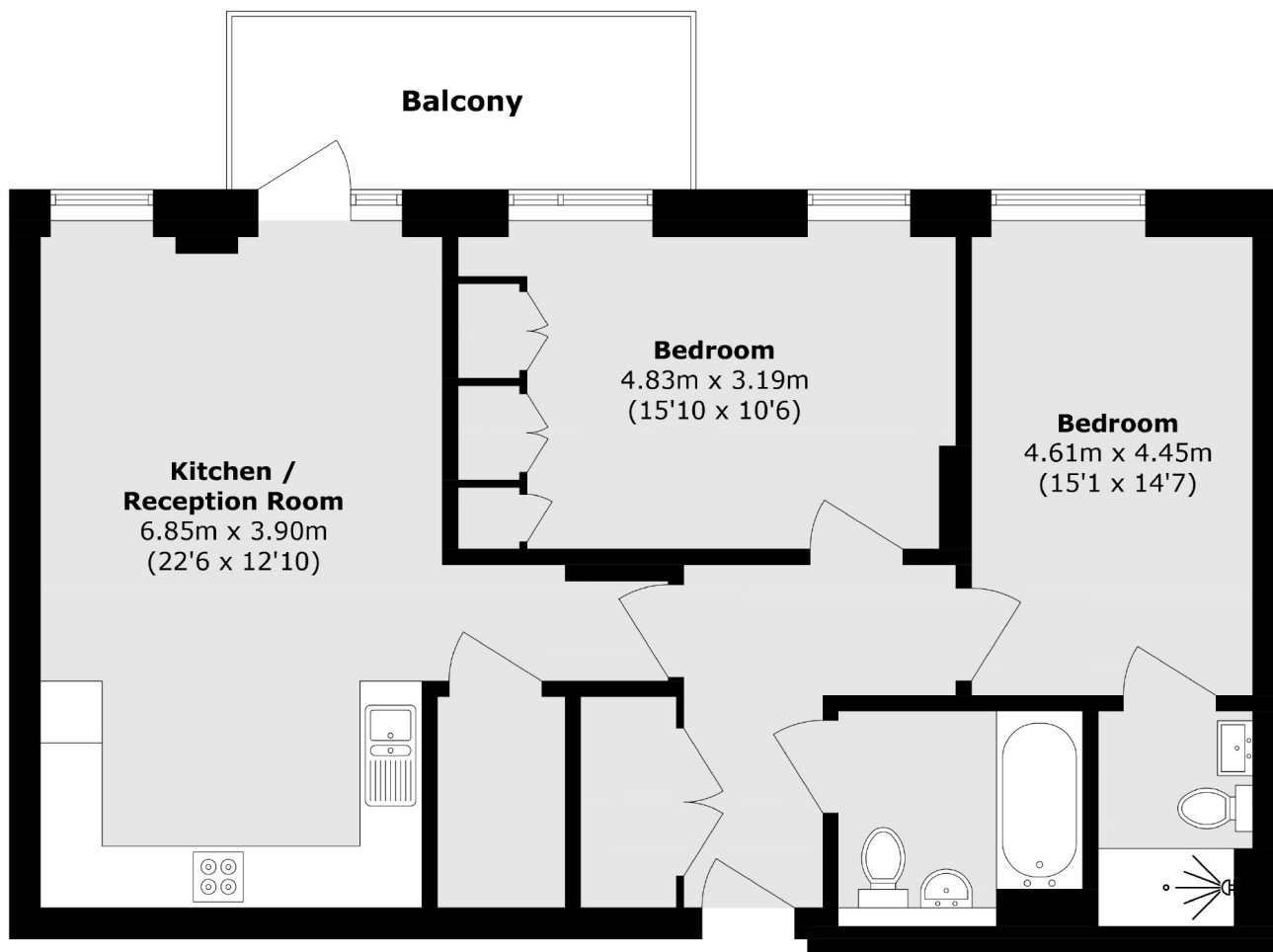
This spacious fourth floor flat features two generously sized bedrooms, including a principal bedroom with an en suite, as well as a newly refurbished W/C. The open plan kitchen and reception area creates an inviting living space, further enhanced by a private south-facing balcony offering outstanding views across London.

Located only a moments walk away from the high street plus having local shops and the shopping centre close by. You can take advantage of near by transports links such as Wood Green Station(Piccadilly Line) and being within reach of the Overground station at White Hart Lane.

Features

- Double Glazing
- Allocated Parking
- Private Balcony
- Lift Access
- Private Gated Development
- Transport Links

Rowland Road, London, N17



Total area (approx.): 79.1 sq. m (851.4 sq. ft)

Balcony area (approx.): 7.4 sq. m (79.6 sq. ft)