



**Victoria Bolt**  
estate agents POWERED BY **exp** UK

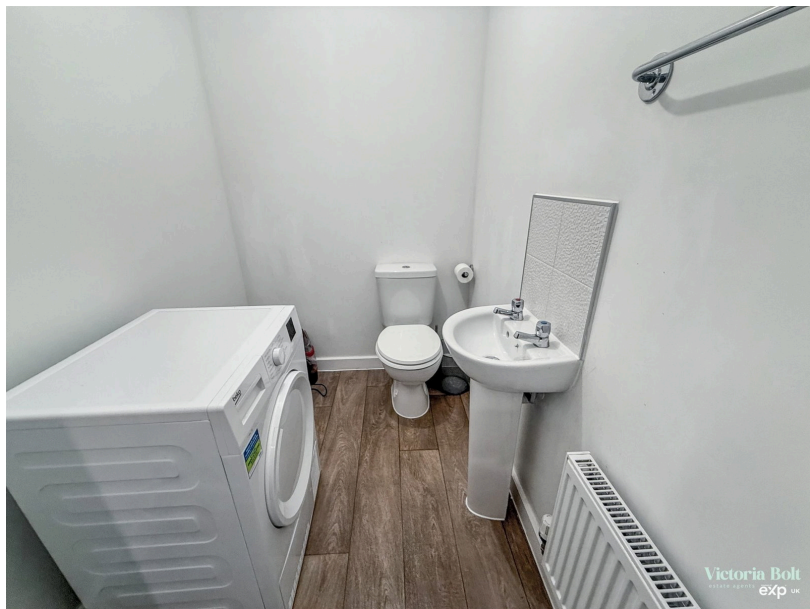
# Moyles Park, Modbury

Guide Price £136,000

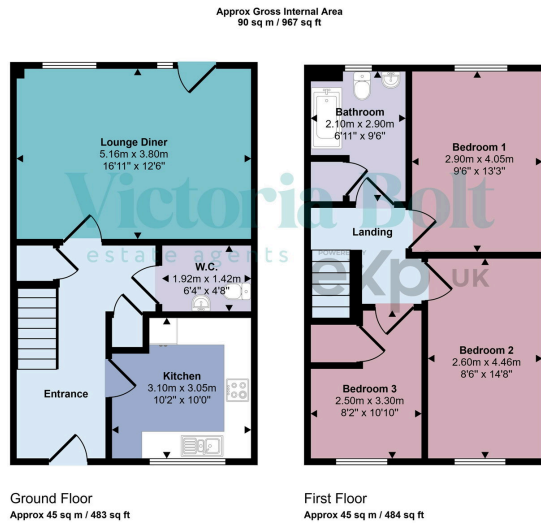
🛏️ 3 🚿 1 🚗 1



- 40% shared ownership
- End of terrace three-bedroom family home
- Spacious lounge/diner with access to the garden
- Modern fitted kitchen with good storage
- Contemporary family bathroom
- Convenient downstairs W.C.
- Generous rear garden with back gate access
- Bright and well-proportioned living spaces
- Popular residential location in Modbury
- Allocated parking for two cars



Well-presented three-bedroom semi-detached house in Modbury, available as shared ownership. Modern kitchen, spacious lounge/diner, and a generous rear garden with back gate.



This floorplan is only for illustrative purposes and is not to scale. Measurements of rooms, doors, windows, and any items are approximate and no responsibility is taken for any error, omission or mis-statement. Icons of items such as bathroom suites are representations only and may not look like the real items. Made with Made Snappy 360.

Score	Energy rating	Current	Potential
92+	A		95 A
81-91	B	85 B	
69-80	C		
55-68	D		
39-54	E		
21-38	F		
1-20	G		