



Wilfred Street, SW1E | £1,750 Per Month



**TUCKERMAN**  
ESTATE AGENTS  
PROPERTY PROFESSIONALS

# Wilfred Street, St James, London

Set in the heart of St James's on Wilfred Street, this bright and well-presented studio apartment offers excellent central London living.

The property features a spacious reception room ideal for both relaxing and entertaining, along with a separate kitchen and a bathroom, all set within a secure, well-maintained building.

Perfectly positioned, it is moments from superb amenities, restaurants and transport links, providing easy access across London and beyond.

An ideal rental opportunity in one of London's most prestigious locations.

Council Tax – Band C





# Wilfred Street, St James, London

Let Agreed

Per Month: £1,750 Per Month

Furnishing: Part furnished

Available From: 29th May 2026

Local Authority: Westminster City

Council Tax Band: C

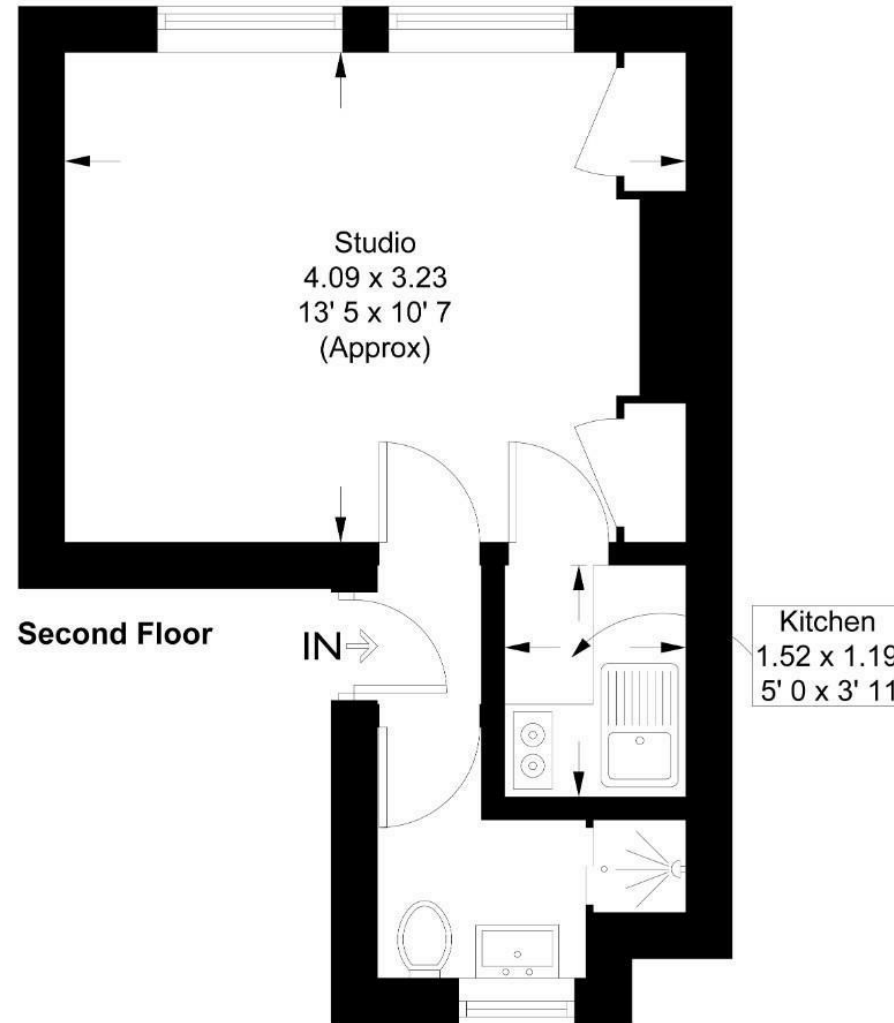
Approximate Gross Internal Area:  
203.00 sq ft

## Energy Efficiency Rating

	Current	Potential
<i>Very energy efficient - lower running costs</i>		
(92 plus) <b>A</b>		
(81-91) <b>B</b>		
(69-80) <b>C</b>		<b>79</b>
(55-68) <b>D</b>	<b>63</b>	
(39-54) <b>E</b>		
(21-38) <b>F</b>		
(1-20) <b>G</b>		
<i>Not energy efficient - higher running costs</i>		
<b>England &amp; Wales</b>	EU Directive 2002/91/EC	

## Wilfred Street

Approximate Gross Internal Area = 203 sq ft / 18.9 sq m



Second Floor

Kitchen  
1.52 x 1.19  
5' 0 x 3' 11

This plan is not to scale and must be used as layout guidance only. All measurements and areas are approximate and should not be relied upon to provide accurate information. This plan must not be relied upon when making property valuations, design considerations or any other such relevant decisions. We accept no responsibility or liability (whether in contract, tort or otherwise) in relation to any loss whatsoever arising from or in connection with any use of this plan or the adequacy, accuracy or completeness of it or any information within it.

Agents Note: Whilst every care has been taken to prepare these sales particulars, they are for guidance purposes only. All measurements are approximate are for general guidance purposes only and whilst every care has been taken to ensure their accuracy, they should not be relied upon and potential buyers are advised to recheck the measurements

020 7222 5510

info@tuckermanresidential.co.uk  
52 Moreton Street, London, SW1PV 2PB  
www.tuckermanresidential.co.uk

**TUCKERMAN**  
ESTATE AGENTS  
PROPERTY PROFESSIONALS