



# DRAYTON GARDENS

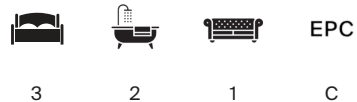
Chelsea, SW10





# SPACIOUS THREE BEDROOM LATERAL APARTMENT

The apartment provides generous lateral space and high ceilings. The combination of a sizeable reception room, separate office and three bedrooms makes it a versatile home within a sought-after Chelsea address.



Local Authority: Royal Borough of Kensington and Chelsea

Council Tax band: G

Tenure: Leasehold with approximately 947 years remaining

Ground rent: We have not received details surrounding the ground rent. Please make your own enquiries Service charge: £5,747

Guide price: £2,800,000



## DRAYTON COURT CHELSEA SW10

Situated on the second floor of a well-maintained period building, this lateral apartment offers strong proportions, a practical layout and excellent natural light throughout.

The reception room extends across the width of the property, benefiting from a ceiling height of approximately 2.6m, and provides a generous space for both living and dining. A private balcony sits just off this room, adding a useful outdoor element to the arrangement.

The kitchen is positioned adjacent to the main living area, providing good separation while remaining convenient for day-to-day use. An additional office sits nearby, offering a dedicated workspace or a flexible ancillary room.







## BEDROOMS & LOCATION

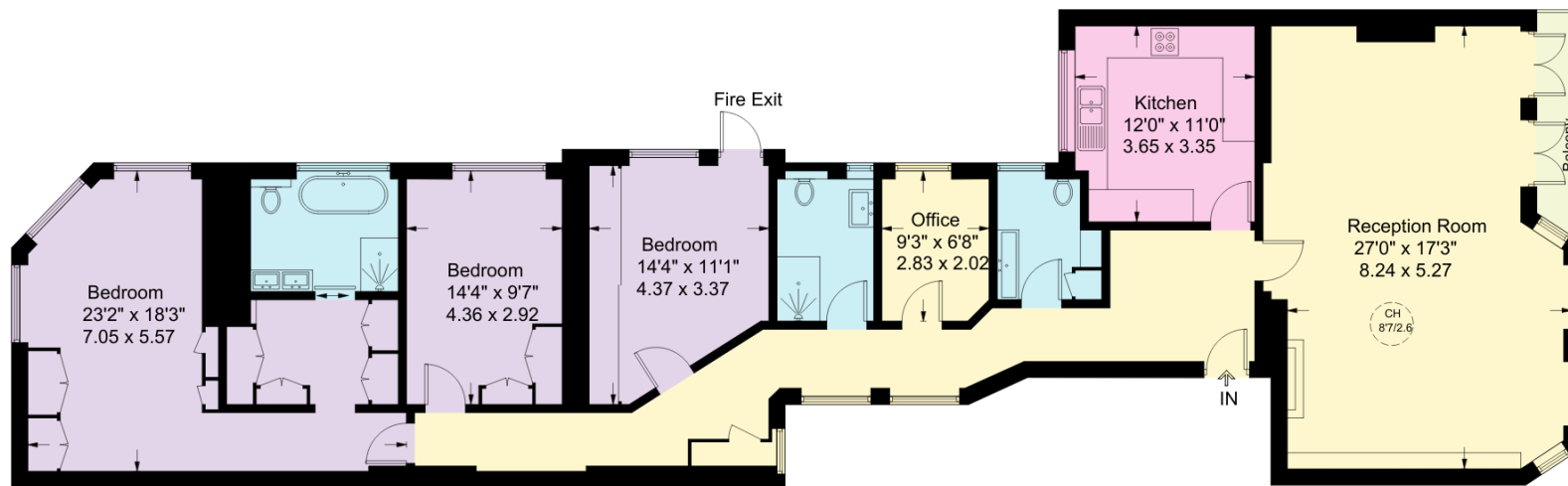
The bedroom accommodation is peacefully positioned to the rear, comprising three well-proportioned rooms. The largest bedroom provides excellent volume and scope with a defined sleeping area, en suite bathroom and dressing room, while the remaining two bedrooms offer comfortable and balanced spaces, suitable for guests, family or long-term use. These bedrooms are served by a separate bathroom.

Drayton Gardens is a desirable residential address in Chelsea, positioned between the amenities of Fulham Road and Old Brompton Road. The area offers an excellent selection of cafés, neighbourhood restaurants and everyday conveniences, as well as easy access to the cultural institutions of South Kensington. Green spaces at Onslow Gardens and The Boltons are close by, while transport is straightforward with nearby underground stations providing District, Circle and Piccadilly line services for travel across London.



We have been informed of some fire safety matters that applicants should be aware of when considering this property. Further information will be provided.





Second Floor

Drayton Gardens, SW10  
Approximate Gross Internal Area = 163.7 sq m / 1,762 sq ft

This plan is for layout guidance only. Not drawn to scale unless stated. Windows and door openings are approximate. Whilst every care is taken in the preparation of this plan, please check all dimensions, shapes and compass bearings before making any decisions reliant upon them. (ID767266)

Claire Mengham

020 3978 2462

claire.mengham@knightfrank.com

**Knight Frank Chelsea and South Kensington**

352a Kings Road

SW3 5UU

**knightfrank.co.uk**

Your partners in property

---

1. Particulars: These particulars are not an offer or contract, nor part of one. You should not rely on statements given by Knight Frank in the particulars, by word of mouth or in writing ("information") as being factually accurate about the property, its condition or its value. Neither Knight Frank nor any joint agent has any authority to make any representations about the property, and accordingly any information given is entirely without responsibility on the part of Knight Frank. 2. Material Information: Please note that the material information is provided to Knight Frank by third parties and is provided here as a guide only. While Knight Frank has taken steps to verify this information, we advise you to confirm the details of any such material information prior to any offer being submitted. If we are informed of changes to this information by the seller or another third party, we will use reasonable endeavours to update this as soon as practical. 3. Photos, Videos etc: The photographs, property videos and virtual viewings etc. show only certain parts of the property as they appeared at the time they were taken. Areas, measurements and distances given are approximate only. 4. Regulations etc: Any reference to alterations to, or use of, any part of the property does not mean that any necessary planning, building regulations or other consent has been obtained. A buyer must find out by inspection or in other ways that these matters have been properly dealt with and that all information is correct. 5. Fixtures and fittings: A list of the fitted carpets, curtains, light fittings and other items fixed to the property which are included in the sale (or may be available by separate negotiation) will be provided by the Seller's Solicitors. 6. VAT: The VAT position relating to the property may change without notice. 7. To find out how we process Personal Data, please refer to our Group Privacy Statement and other notices at <https://www.knightfrank.com/legals/privacy-statement>.

Particulars dated January 2026. Photographs and videos dated January 2026. All information is correct at the time of going to print. Knight Frank is the trading name of Knight Frank LLP. Knight Frank LLP is a limited liability partnership registered in England and Wales with registered number OC305934. Our registered office is at 55 Baker Street, London W1U 8AN. We use the term 'partner' to refer to a member of Knight Frank LLP, or an employee or consultant. A list of members names of Knight Frank LLP may be inspected at our registered office. If you do not want us to contact you further about our services then please contact us by either calling 020 3544 0692, email to [marketing.help@knightfrank.com](mailto:marketing.help@knightfrank.com) or post to our UK Residential Marketing Manager at our registered office (above) providing your name and address.

