

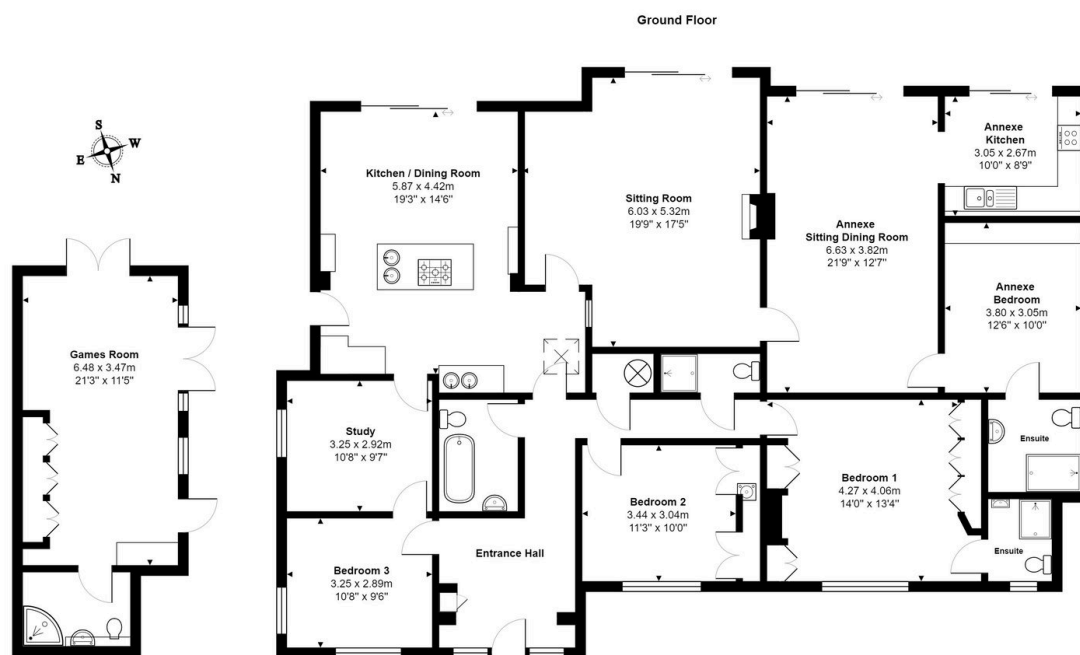
The Lanes, Houghton, Huntingdon, PE28 2BW

Guide Price £950,000

4 3 3



- A beautifully presented detached bungalow in the heart of Houghton
- The versatile games room is built to full building specifications with en-suite
- Three double bedrooms including a main bedroom with its own en-suite
- A self contained annexe with its own kitchen, bedroom and en-suite
- Virtual tour available upon request
- The kitchen/dining room is a real highlight with high end integrated appliances
- A dedicated study perfect for working from home
- A beautiful south facing garden approaching a fifth of an acre
- Quiet lane location in one of Cambridgeshire's most sought-after villages
- EPC Rating: C/72



Total Area: 196.1 m² ... 2111 ft² (excluding games room)
 All measurements are approximate and for display purposes only

A beautifully kept detached bungalow in one of Cambridgeshire's most sought-after villages – with a self-contained annexe, a games room, and a south-facing garden approaching a fifth of an acre. Properties like this don't come along often!