



Empire Square East, SE1 £610,000

A beautifully presented sixth floor apartment, with far reaching southerly views, a spacious open plan kitchen and living room, two generous double bedrooms, two bathrooms and a private courtyard facing balcony. 24 hour Concierge. Chain Free Sale. Offers in excess of £610,000.

Empire Square is enviably located at the top of Long Lane, next to Borough High Street & Borough tube, with London Bridge Station, Bank Side, Borough Market and the Shard just beyond.

Features

Offers in excess of £610,000.
Private Balcony
Courtyard Facing
Two Double Bedrooms - Two
Bathrooms
24 Hour Concierge
Lift Access & Secure Entry
Chain Free Sale



Empire Square East, SE1

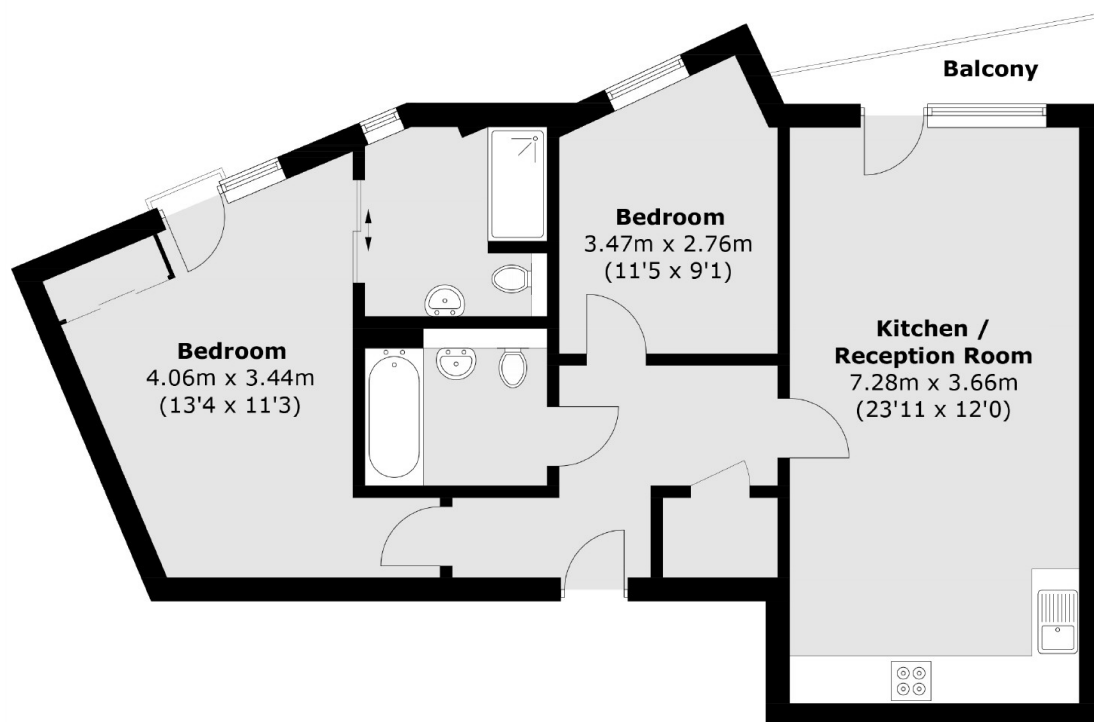
Facing into the courtyard, this is a very quiet, south-facing apartment. Both bedrooms are very good sizes, with an en-suite shower room off the master bedroom and an additional family bathroom.

Empire Square is a well maintained, award winning development in the heart of vibrant Borough. The development benefits from a 24 hour concierge, secure entry, dual lift access and on-site gym (membership fee applies).

The Shard, Bermondsey Street Borough Market & The South Bank all in close proximity. An eclectic mix of boutiques, art galleries, theatres, gastro pubs, bars, restaurants & food markets, including Borough Market and Flat Iron Square, are all on the doorstep.



Empire Square East, London, SE1



Total area (approx.): 74.3 sq. m (799.7 sq. ft)
Balcony area: 2.9 sq. m (31.2 sq. ft)