



10 Nursery Close, Watford
£675,000



 fairfieldestates



10 Nursery Close

Watford

This beautifully presented three bedroom semi detached house is located in a highly sought after cul-de-sac within the desirable Oxhey Hall area, offering a picturesque outlook over the green and a peaceful setting that is ideal for families and professionals alike.

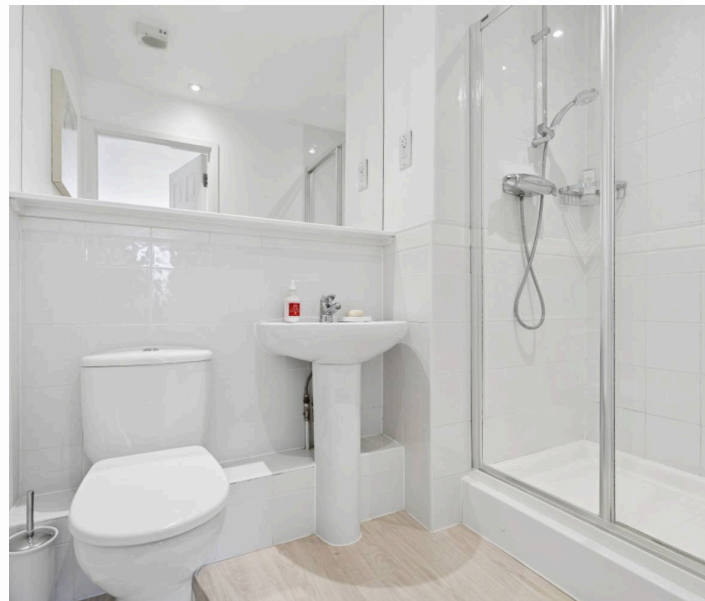
Council Tax band: E

Tenure: Freehold

EPC Energy Efficiency Rating: C

EPC Environmental Impact Rating:

- QUIET CUL-DE-SAC LOCATION
- NO UPPER CHAIN
- THREE BEDROOMS / TWO BATHROOMS
- NURSERY CLOSE / OXHEY HALL - SOUGHT AFTER LOCATION
- PICTURESQUE OUTLOOK OVER THE GREEN
- EXCELLENT DECORATIVE ORDER THROUGHOUT
- PRINCIPAL BEDROOM WITH ENSUITE
- EPC RATING - C / COUNCIL TAX BAND - E







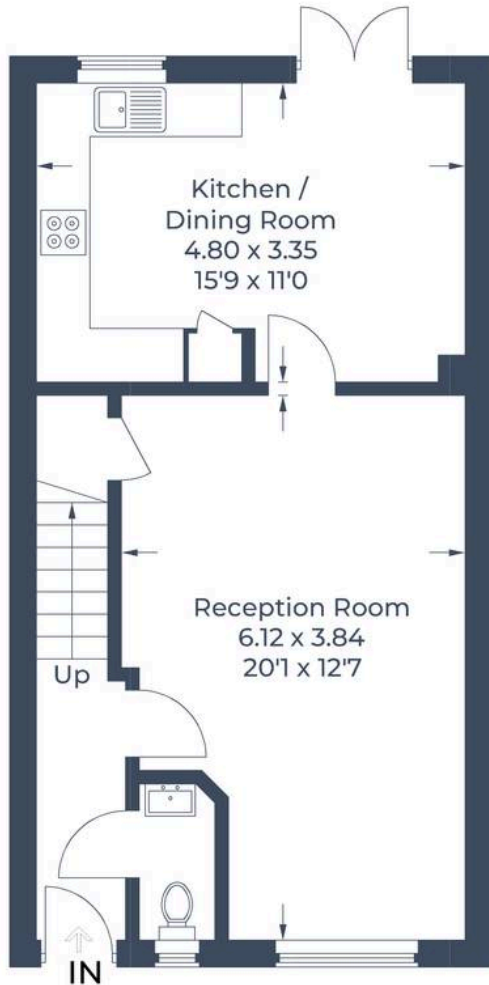




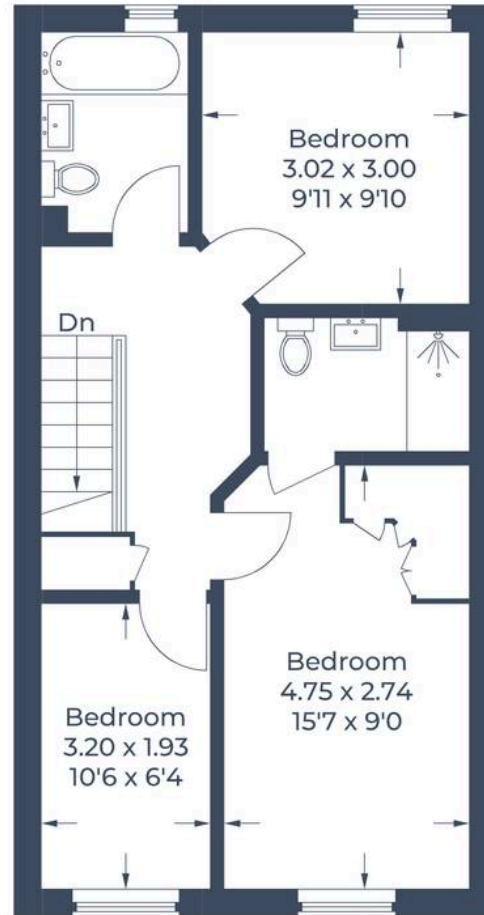




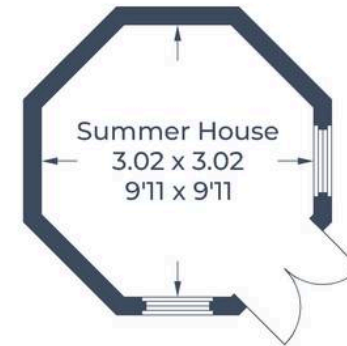
Approximate Gross Internal Area
Ground Floor = 46.4 sq m / 499 sq ft
First Floor = 46.1 sq m / 496 sq ft
Summer House = 7.6 sq m / 82 sq ft
Total = 100.1 sq m / 1,077 sq ft



Ground Floor



First Floor



(Not Shown In Actual Location / Orientation)

Illustration for identification purposes only,
measurements are approximate, not to scale.
© CJ Property Marketing Produced for Fairfield Estates





Fairfield – Oxhey

1 Station Approach, Watford – WD19 7DT

020 8428 0540 • rob@fairfieldstates.co.uk • fairfieldstates.co.uk/

We have prepared these particulars as a general guide of the property and they are not intended to constitute part of an offer or contract. We have not carried out a detailed survey of the property and we have not tested any apparatus, fixtures, fittings, or services. All measurements and floorplans are approximate, and photographs are for guidance only. These should not be relied upon for the purchase of carpets or any other fixtures or fittings. Lease details, service