



Coleridge Drive, Choppington, NE62 5HD

Offers Over £140,000

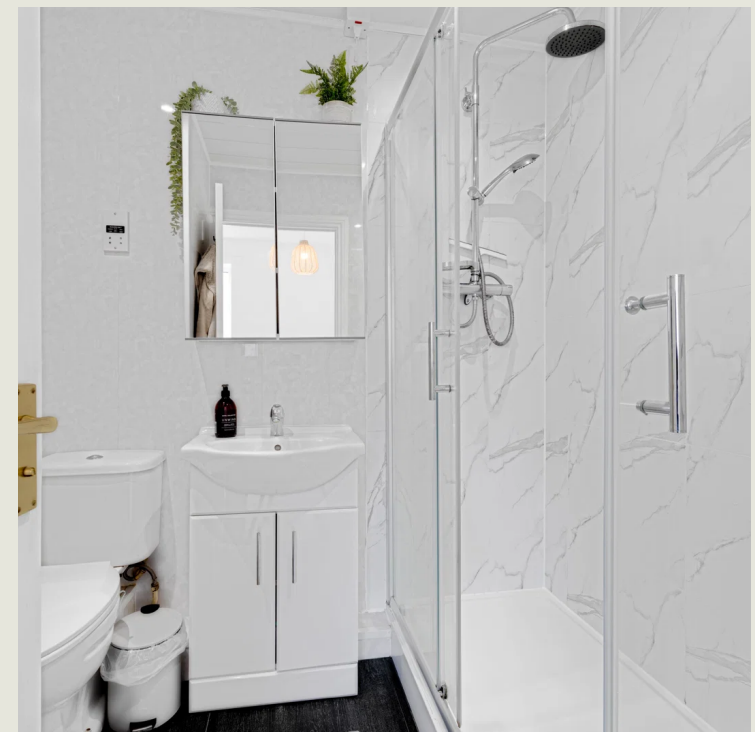
Harpers | POWERED BY **exp**™ UK
property people

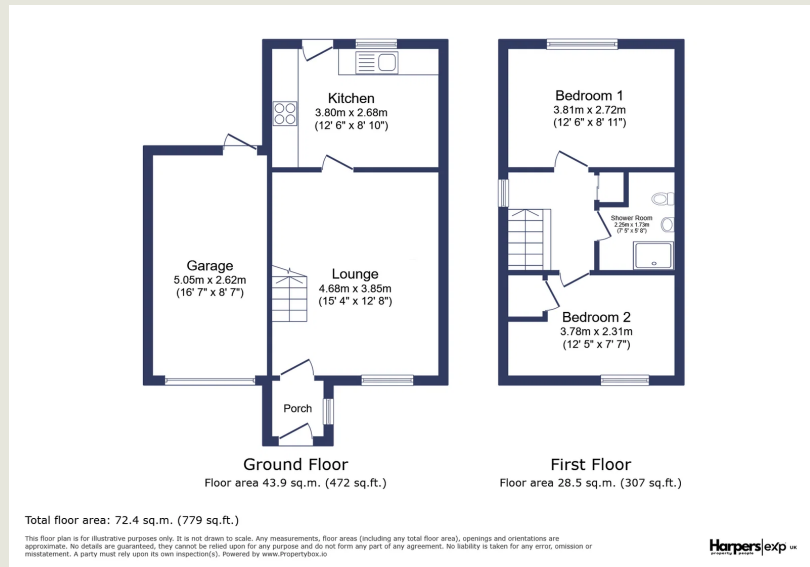
Bedrooms: 2 | Bathrooms: 1 | Receptions: 1

This beautifully presented two-bedroom semi-detached home on Coleridge Drive, Choppington, offers an exceptional opportunity for comfortable and modern living. The property welcomes you with a spacious front-aspect living room, providing a bright and inviting space for relaxation. A highlight of this home is the re-fitted eat-in kitchen, which seamlessly opens to the garden, perfect for dining and entertaining. A modern shower room serves the two well-proportioned bedrooms, ensuring comfortable accommodation. Externally, the property benefits from a good-sized South-facing garden with an open aspect, offering a private outdoor retreat. A driveway and single garage provide convenient off-street parking. This home is very well presented throughout and is situated in a sought-after residential location, making it a brilliant choice whether you are seeking your first home or looking to downsize.

- Semi-Detached Home
- Two Well Proportioned Bedrooms
- Modern Shower Room
- Spacious Front Aspect Living Room
- Re-Fitted Eat-In Kitchen Opening To Garden
- Good-Sized South Facing Garden With Open Aspect
- Driveway & Single Garage
- Very Well Presented Throughout
- Sought After Residential Location
- Brilliant First Home or Downsize







Harpers Property People

80 Windsor Gardens, Bedlington, NE22 5SY

07813 673 606

ali@harpersproperty.com

<https://harpersproperty.com>

Harpers | POWERED BY **exp**™ UK
property people