



31 Draycott Avenue | | LONDON | SW3 3BS

£2,423 Per month

**ESON2**  
REAL ESTATE

## Key features

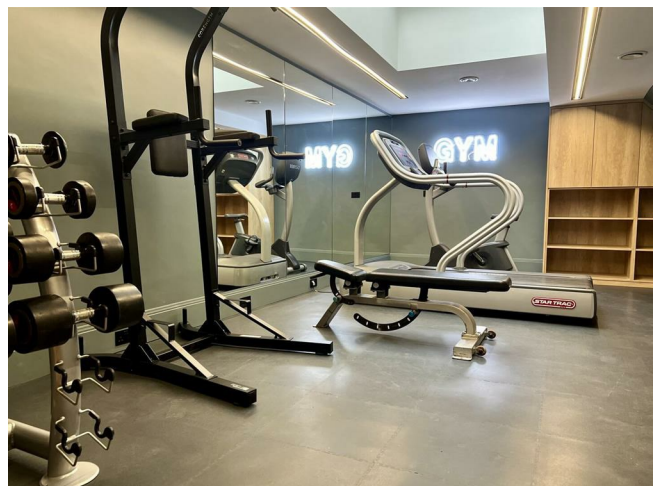
- Open-Plan Living
- High-End Kitchen
- Luxurious Bathroom
- Smart Design
- On-site Gym
- Workspace Facilities
- 24/7 Security

## Description

Newly renovated Chelsea studio with bright open-plan layout and large window by the bed. Features premium kitchen appliances, separate dining and study tables, built-in storage, elegant bathroom, plus on-site gym and co-working spaces. Prime location near King's Road.



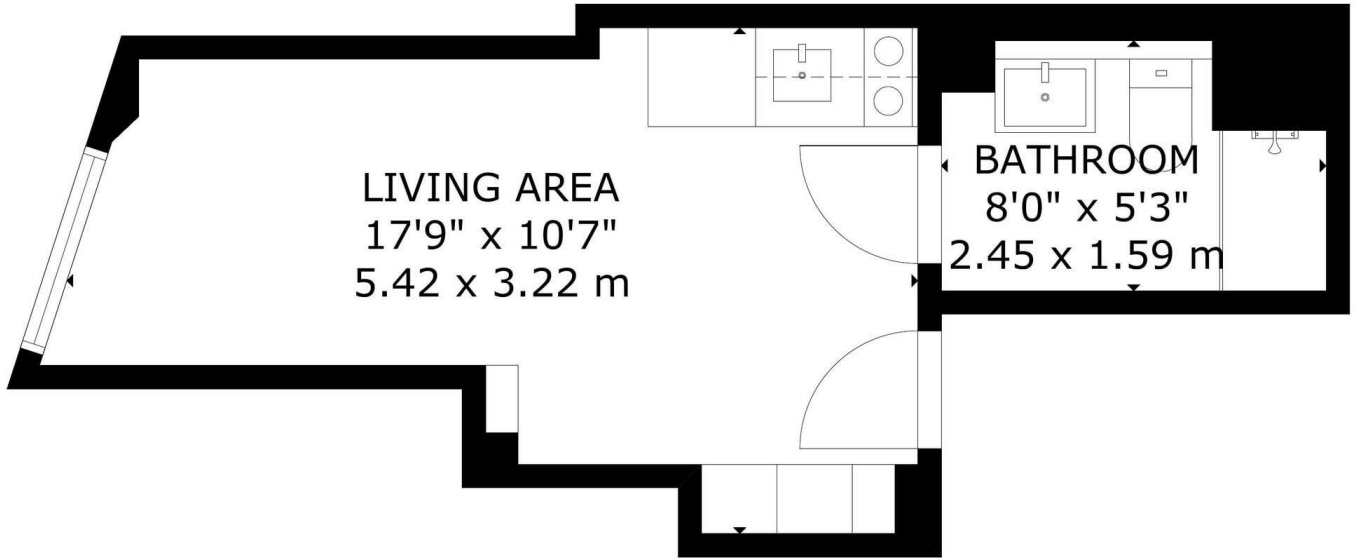
## Directions



A bright open-plan space filled with a natural light make everyday living effortless, A fully equipped kitchen with premium integrated appliances and a stylish bathroom with walk-in shower. An elegant space that's both functional and modern creating a unique ambiance.



# Floor plans

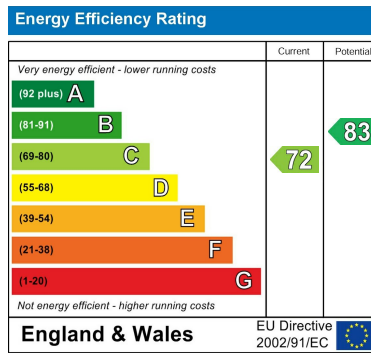


**LIVING AREA**  
 17'9" x 10'7"  
 5.42 x 3.22 m

**BATHROOM**  
 8'0" x 5'3"  
 2.45 x 1.59 m

LOWER GROUND FLOOR

GROSS INTERNAL AREA  
 TOTAL: 17 m<sup>2</sup>/185 sq.ft  
 LOWER GROUND FLOOR: 17 m<sup>2</sup>/185 sq.ft  
 SIZE AND DIMENSIONS ARE APPROXIMATE, ACTUAL MAY VARY



Council Tax Band    EPC Rating C



301 Michelin House 81 Fulham road  
 London  
 Greater London  
 SW3 6RD  
 07920 257649  
 fayeel@eson2.co.uk  
 www.eson2.co.uk