



Cambridge Road, TW1

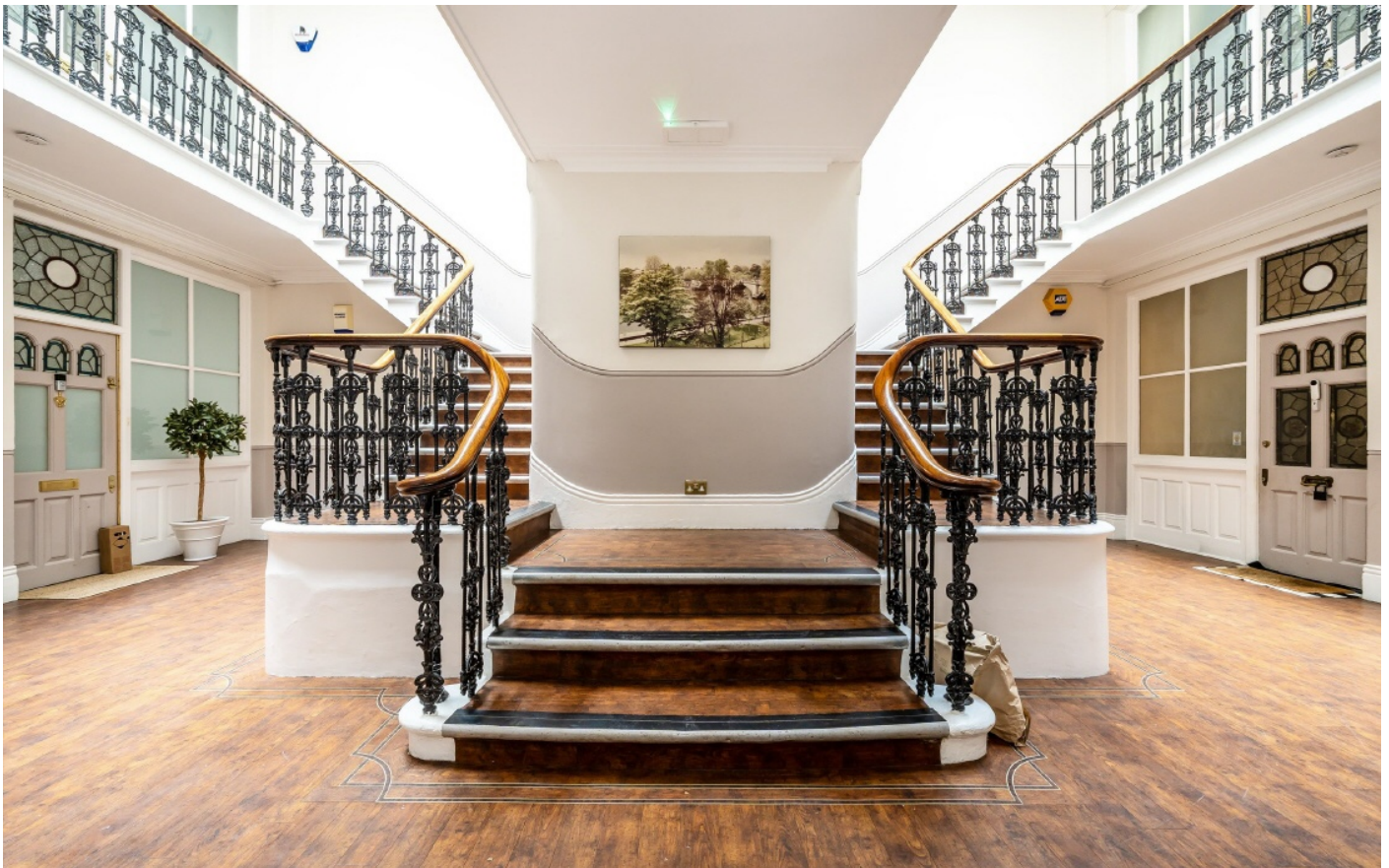
£3,995 Per calendar month

A beautifully presented and rarely available three bedroom mansion apartment with a private garden. The property is ideally positioned on the prestigious and highly sought-after Cambridge Road just moments from the River Thames.

Heatherdene Mansions is located on Cambridge Road which is one of East Twickenham's premier roads. Within 0.2 miles from the River Thames and within a quarter of a mile of Richmond town centre with its amenities. The property is excellently located for Richmond Station and outstanding primary and secondary schools.

Features

- Mansion Apartment
- Ground Floor
- Three Bedrooms
- High Ceilings
- Private Garden
- Prime Location



Cambridge Road, TW1

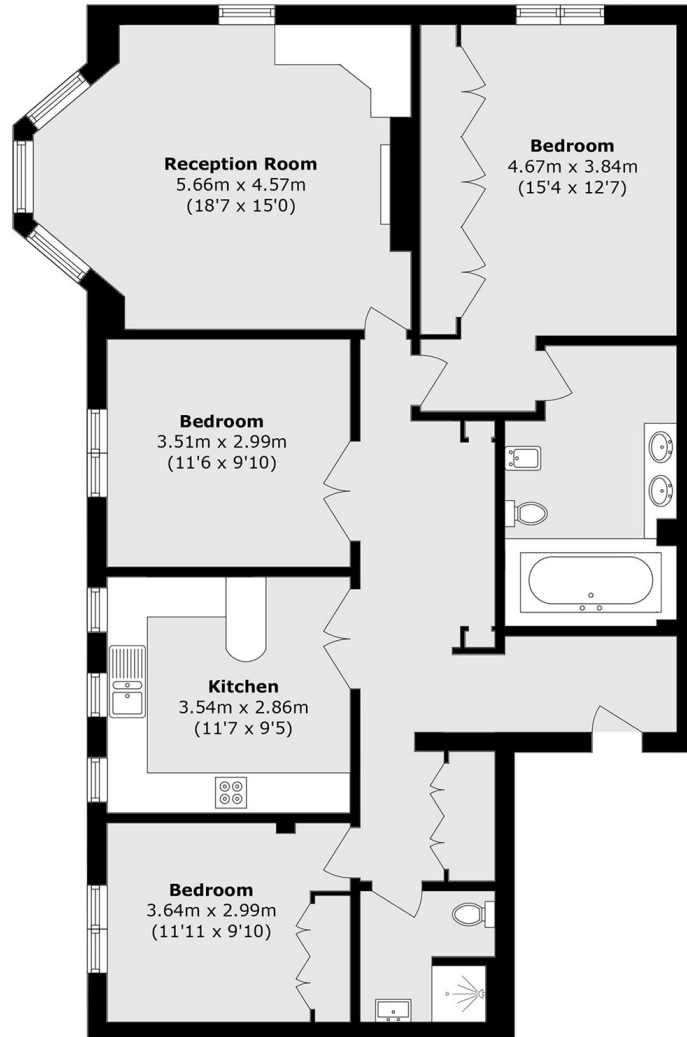
This stunning ground floor apartment offers a spacious entrance hall, a large eat-in kitchen, family bathroom and an impressive reception room featuring a beautiful bay window overlooking the private garden.

There are two generous double bedrooms, with the principal bedroom benefitting from an en suite bathroom complete with a large Jacuzzi-style bath. A versatile third bedroom, which could also be used as an additional reception room or home office, provides direct access onto the garden.

Further benefits include high ceilings, built-in storage and an abundance of natural light throughout.



Cambridge Road, Twickenham, TW1



Total area (approx.): 118.4 sq. m (1274.4 sq. ft)