



OAKFIELD



Sea Road, Bexhill-On-Sea, TN40 1JL

£1,000 Per Calendar Month



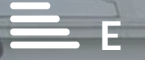
2



1



1



E

Sea Road, Bexhill-On-Sea, TN40 1JL

****Zero Deposit Option****

If you are looking for a property with sea views and walking distance to the beach then look no further

This two double bedroom third floor flat is situated in the centre of town within walking distance to the train station, shops and beach.

The property comprises two double bedrooms both with built in cupboards, a modern fitted kitchen with matching wall and base units and induction hob with space for a washing machine and fridge/freezer, a living room with bay fronted window benefitting from a sea view, a bathroom with full sized bath and shower over, and a separate W.C with a hand basin included.

Additional benefits include double glazing, modern electric heaters and a secure entry phone system.

Please note:
An annual income of £30,000 will be required for this property





Kitchen

11'5" x 5'2" (3.5 x 1.6)

Living Room

14'1" x 13'5" (4.3 x 4.1)

Bedroom One

13'9" x 10'5" (4.2 x 3.2)

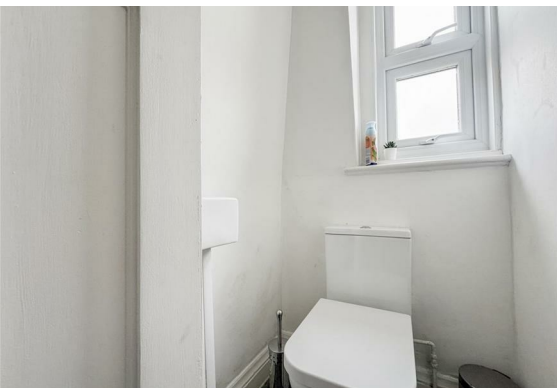
Bedroom Two

13'5" x 12'1" (4.1 x 3.7)

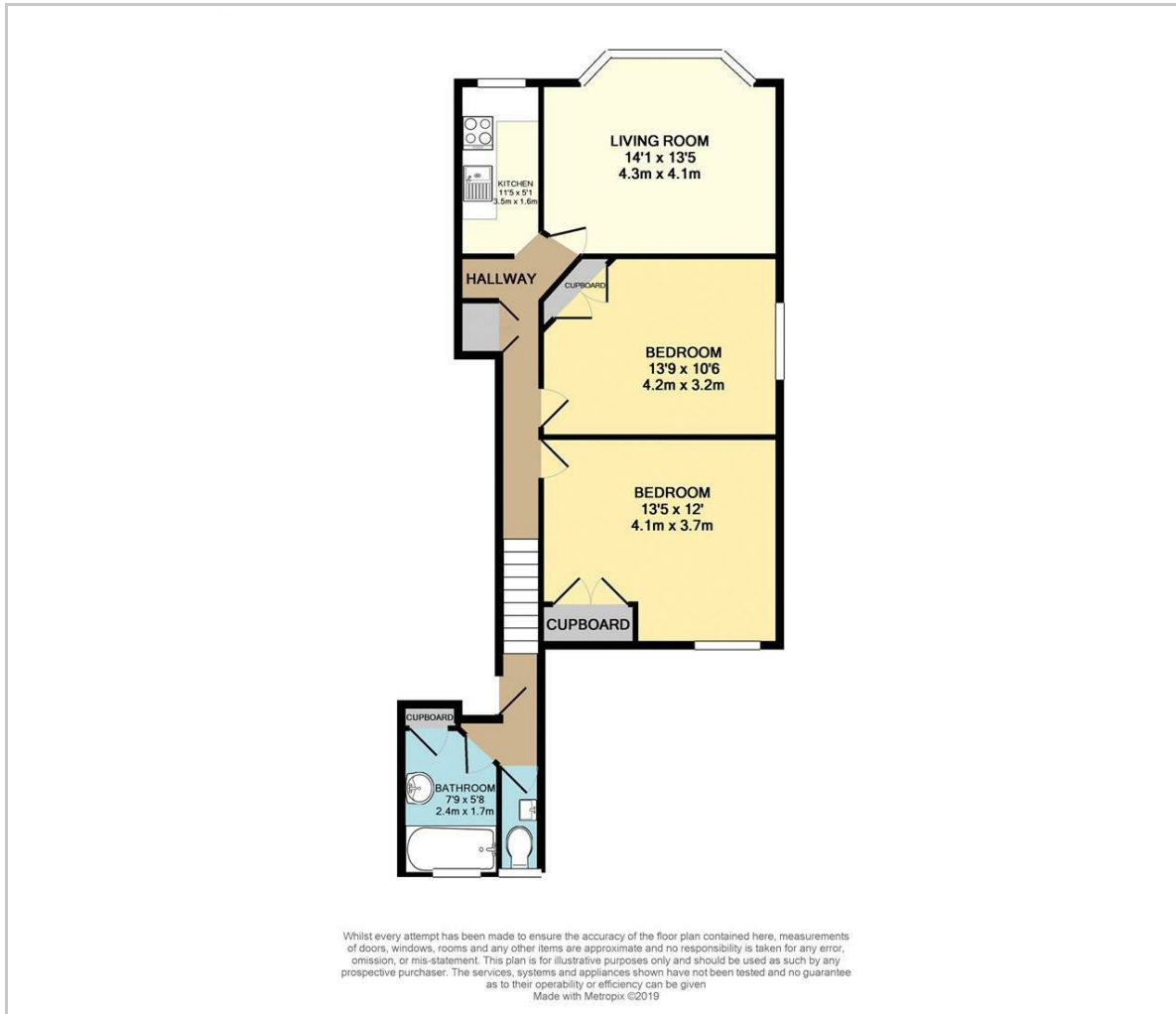
Bathroom

7'10" x 5'6" (2.4 x 1.7)

Council Tax Band A



Floor Plan



Viewing

Please contact us on 01424 817075 if you wish to arrange a viewing appointment for this property or require further information.

These particulars, whilst believed to be accurate are set out as a general outline only for guidance and do not constitute any part of an offer or contract. Intending purchasers should not rely on them as statements of representation of fact, but must satisfy themselves by inspection or otherwise as to their accuracy. No person in this firm's employment has the authority to make or give any representation or warranty in respect of the property.

Area Map



Energy Efficiency Graph

