



## Winsford Road, £450,000

- FOUR BEDROOM DETACHED FAMILY HOME
- TWO RECEPTION ROOMS
- KITCHEN/DINING/FAMILY AREA
- FAMILY BATHROOM
- OFF ROAD PARKING
- GARAGE
- HUGE POTENTIAL
- CHAIN FREE



 4  2  2



## About the property

Set within the ever-popular village of Sully, this four-bedroom detached family home presents a rare opportunity to acquire a property brimming with potential, perfectly positioned to enjoy the best of both Penarth and Barry.

Occupying a generous plot, the home offers well-proportioned accommodation that would suit a growing family or buyers looking for space to adapt and enhance. The location is a real highlight - village charm combined with excellent access to coastal walks, local amenities, schools, and transport links into Cardiff and beyond.

This is a true project property for those keen to put their own stamp on a home. Whether you're dreaming of open-plan living, extending (subject to consents), or simply modernising to your own taste, the scope here is exciting. With its detached position and sizeable garden, the foundations for a superb long-term family home are firmly in place.

Offered with no onward chain, this is an opportunity not to be missed. Early viewing is highly recommended to fully appreciate the potential, setting, and lifestyle on offer in one of the Vale's most desirable village



## Accommodation

Hallway

Wc

Living Room

Dining Room

Kitchen/Breakfast Room

Landing

Bedroom 1

Bedroom 2

Bedroom 3

Bedroom 4

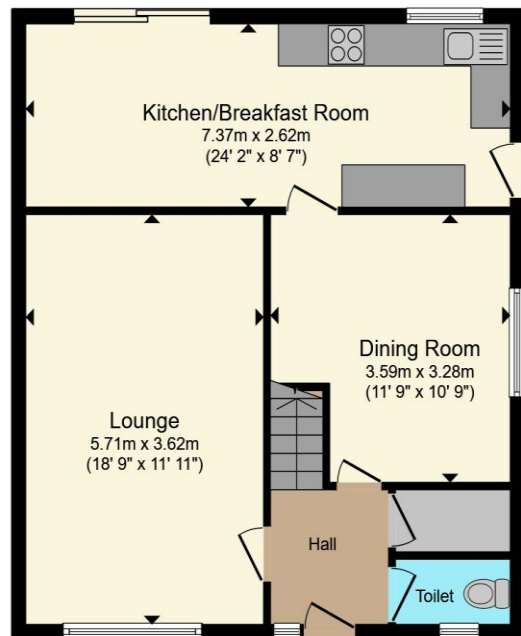
Bathroom

Outside

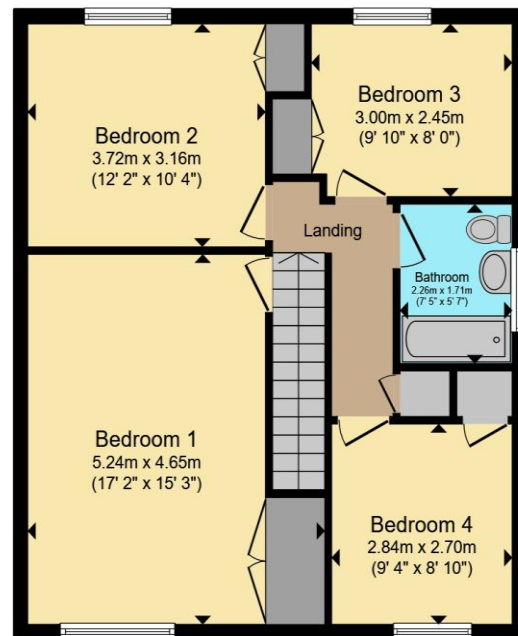
02920 703799

penarth@peteralan.co.uk

## Floorplan



**Ground Floor**



**First Floor**

Total floor area 125.3 m<sup>2</sup> (1,349 sq.ft.) approx

This floor plan is for illustrative purposes only. It is not drawn to scale. Any measurements, floor areas (including any total floor area), openings and orientation are approximate. No details are guaranteed, they cannot be relied upon for any purpose and they do not form part of any agreement. No liability is taken for any error, omission or misstatement. A party must rely upon its own inspection(s). Powered by [www.propertybox.io](http://www.propertybox.io)



## Important Information

Note while we endeavour to make our sales details accurate and reliable, if there is any point which is of particular interest to you, please contact the office and we will be pleased to confirm the position for you. We have not personally tested any apparatus, equipment, fixtures, fittings or services and cannot verify they are in working order or fit for their purposes. Nothing in these particulars is intended to indicate that carpets or curtains, furnishings or fittings, electrical goods (whether wired or not). Gas fires or light fittings or any other fixtures not expressly included form part of the property offered for sale. This computer generated Floorplan, if applicable, is intended as a general guide to the layout and design of the property. It is not to scale and should not be relied upon for dimensions. Tenure: We cannot confirm the tenure of the property as we have not had access to the legal documents. The buyer is advised to obtain verification from their solicitor or surveyor.

Peter Alan Limited is registered in England and Wales under company number 2073153. Registered Office is Cumbria House, 16-20 Hockliffe Street, Leighton Buzzard, Bedfordshire, LU7 1GN. VAT Registration Number is 500 2481 05. For activities relating to regulated mortgages and non-investment insurance contracts, Peter Alan Limited is an appointed representative of Connells Limited which is authorised and regulated by the Financial Conduct Authority. Connells Limited's Financial Services Register number is 302221. Most buy-to-let

